

**Evaluation of the Florida Tax Credit Scholarship Program
Participation, Compliance and Test Scores in 2016-17**

Zahid Kisa Melissa Dyehouse Toby Park Brian Andrews-Larson

Carolyn Herrington

**Learning Systems Institute
Florida State University**

July 2018



Contents

EXECUTIVE SUMMARY	v
1. BACKGROUND	1
2. TEST SCORE COLLECTION IN 2016-17	2
Data collection protocol.....	2
Participating private school compliance with protocol	3
Score reporting in 2016-17.....	3
Comparison of students with legible, valid test scores to scholarship population.....	6
3. TEST SCORES OF FTC STUDENTS IN 2016-17	7
Average test scores in 2016-17 by attributes of program participants.....	9
4. GAIN SCORES FROM 2015-16 TO 2016-17	10
Test score gains for FTC students.....	10
School-level differences in average gain scores, 2015-16 to 2016-17	12
Individual school average gain scores, 2015-16 to 2016-17	14
5. ATTRIBUTES OF NEW PROGRAM PARTICIPANTS IN 2016-17	16
Comparison of characteristics of new FTC students and non-participant students	17
Comparison of new FTC students and non-participant students in terms of performance of their schools in 2015-16	18
Comparison of new FTC students and non-participant students within their schools in terms of performance in 2015-16	20

6. PERFORMANCE OF PROGRAM PARTICIPANTS WHO RETURN TO FLORIDA	
PUBLIC SCHOOLS.....	23
Comparison of 2015-16 performance of public school returnees and FTC stayers in 2016-17.....	23
Comparison of 2016-17 FSA performance of public school returnees and low income public school students.....	25
7. CONCLUSION	27
APPENDIX.....	29

Tables

Table 1: Distribution of score reporting percentages: 2016-17 and prior years5

Table 2: Distribution of percent and number of students with legible, valid scores:
2016-17 and prior years.....6

Figures

Figure 1: Distribution of normal curve equivalent scores of FTC students, 2016-17..8

Figure 2: Average test scores of program participants in 2016-17 by attributes 9

Figure 3: Distribution of test score gains for FTC students, 2015-16 to 2016-17..... 11

Figure 4: Distribution of school average gains for FTC students, 2015-16 to 2016-17
..... 12

Figure 5: Distribution of school average gains for FTC students, 2015-16 to 2016-
17, schools with 10+ gain scores..... 13

Figure 6: Comparison of prior year characteristics of new FTC students to "income
eligible" non-participant students, 2016-17..... 18

Figure 7: Comparison of the share of new FTC participants by the performance of
their previously attended public school to eligible non-participants..... 19

Figure 8: Comparison by quintile of new FTC students in 2016-17 to eligible non-
participant students of school ELA FSA score distribution 21

Figure 9: Comparison by quintile of new FTC students in 2016-17 to eligible non-
participant students of school math FSA score distribution 22

Figure 10: 2015-16 test score performance of students remaining in the FTC
program in 2016-17 versus those who leave the program 24

Figure 11: 2016-17 FSA performance of FTC students returning to public schools in
Florida..... 26

EXECUTIVE SUMMARY

This report details the 2016-17 academic year evaluation for the Florida Tax Credit Scholarship (FTC) program, as required by the 2017 Florida Statutes, s. 1002.395(9)(j). The eleventh in a series of reports, this evaluation is the fourth of those conducted by the Florida State University Learning Systems Institute (LSI). This report provides a summary of key findings, details about test score collection, 2016-17 test score results of program participants, gain scores from 2015-16 to 2016-17 of program participants, school-level average gain scores for schools with at least 30 participating students, attributes of new program participants in 2016-17, and the performance of program participants who return to Florida public schools.

Similar to the several most recent reports, this report also does not compare the performance of FTC students to public school students. Due to the difference in the tests that each group takes, such a comparison may not be valid.

Pursuant to the 2017 Florida Statutes, s. 1002.395(9)(j), LSI was designated as the independent research organization and was directed to conduct annual evaluations of the Florida Tax Credit Scholarship program beginning in the year 2014. This report presents data collected by LSI for students participating in the 2016-17 academic year. The main findings include:

Participating private school compliance with protocol:

- Compliance with program testing requirements was high in 2016-17. Participating private schools reported test scores for 95.8 percent of program participants in grades 3-10. This was comparable to the last year's score reporting (95.6 percent). Compared to the last year, the percentage of students not enrolled during testing, because they either left before testing or arrived after testing at the school, was somewhat lower in 2016-17 at 1.5 percent. This rate was 2.2 percent last year. The percentage of missing/unusable tests was 1.1 percent; the rate of unreported scores due to school closures or suspension from the program was 0.2 percent, the rate of sick or absent students was 0.9 percent, and the rate of students ineligible for testing was 0.4 percent.

Differential program participation rates for different groups of students and families:

- Newly participating FTC students in 2016-17 were more likely to be black, and less likely to be Hispanic or white than non-participant eligible students. Also, they were less likely to be English-language learners than were non-participants. The share of new FTC students who were free-lunch eligible was somewhat higher than the share of free-lunch eligible, non-participant students. Lastly, compared to eligible non-participant students, new FTC students had poorer test

performance both in English Language Arts (ELA) and math before entering the FTC program and they tended to come from lower-performing public schools.

- Former FTC students who returned to the public schools had poorer test performance in both reading and math during their last year in the FTC program, compared to FTC students who remained in the FTC program. Specifically, FTC students who returned to the public schools had a 45.1 normal curve equivalent score in reading and a 43.7 normal curve equivalent score in math, while FTC students who remained in the program scored at the 48.5th normal curve equivalent in reading and the 47.1st normal curve equivalent in math.
- Former FTC students who returned to the public schools also had lower performance in both ELA and math during their first year back in the public schools, compared to low-income public school students who never participated in the FTC program. Former FTC students who returned to the public schools performed at the 38.0th Florida percentile in ELA and the 36.7th Florida percentile in math, while other subsidized meal-eligible public school students who never participated in the FTC program performed at the 43.0rd Florida percentile in ELA and the 43.5th Florida percentile in math.

Test scores of program participants, 2016-17:

- FTC students scored at the 48th normal curve equivalent in reading and the 46th normal curve equivalent in math.
- In terms of gains in math and reading from 2015-16 to 2016-17, though a small decline was observed in gain scores, one can still conclude that the typical FTC student tended to maintain his or her relative position in comparison with all students nationally both in math and reading. It is important to note that the FTC students are being compared to all students nationally and not just students from low-income families.

1. BACKGROUND

This report details the 2016-17 academic year evaluation results of the Florida Tax Credit Scholarship Program, as required by the 2017 Florida Statutes, s. 1002.395(9)(j). The eleventh in a series of reports, this evaluation is the fourth of those conducted by the Florida State University Learning Systems Institute. This report provides a summary of key findings, details about test score collection, 2016-17 test score results of program participants, gain scores from 2015-16 to 2016-17, test score gains of individual schools with at least 30 or more students, attributes of new program participants in 2016-17, and the performance of program participants who return to Florida public schools. Similar to the five previous reports, this report also does not compare the performance of FTC students to public school students. Due to the difference in the tests that each group takes, such a comparison may not be valid. While FTC students take a nationally norm-referenced test, public school students take the Florida Standards Assessments (FSA) Test. Because there is no correspondence between the FSA and the nationally norm-referenced tests that FTC students take, the independent research organization tasked with this evaluation, the Learning Systems Institute, holds that it is not valid to make these comparisons.

Pursuant to the 2017 Florida Statutes, s. 1002.395(9)(j), the Learning Systems Institute (LSI) has been directed to conduct annual evaluations of the Florida Tax Credit Scholarship program beginning in the year 2014. This report provides the results of the 2016-17 academic year evaluation of the Florida Tax Credit Scholarship Program.

2. TEST SCORE COLLECTION IN 2016-17

Data collection protocol

As mandated by the 2017 Florida Statutes, s. 1002.395(8)(c)(2), participating private schools administered a nationally norm-referenced test approved by the Florida Department of Education. The state designates an approved list of tests from which to choose: the ACT Aspire, Basic Achievement Skills Inventory, Comprehensive Testing Program, Curriculum Associates i-Ready Assessments, Educational Development Series, Iowa Assessments, Iowa Tests of Basic Skills, Iowa Tests of Educational Development, Kaufman Test of Educational Achievement, NWEA Measures of Academic Progress, Pivot INSPECT Summative Assessment, PSAT/NMSQT, Scantron Performance Series, Stanford Achievement Test, STAR, TerraNova, or Wide Range Achievement Test. Alternatively, participating students may be administered the FSA in accordance with 1002.395(7)(e).

Data collection took place during the year 2016-17, in which private schools sent students' test scores to the Learning Systems Institute. The 1,461 private schools that had participating students in grades 3 through 10 during the 2016-17 school year were contacted by the Learning Systems Institute in spring 2017 and again throughout spring and summer 2017 to encourage compliance with score reporting. Schools were provided a roster of participating FTC students, which was obtained in early spring 2017 from the Scholarship Funding Organizations.¹ From the 1,461 private schools with participating FTC students, 55,148 students were enrolled in

¹ This roster is based on actual payments made to schools and is thus thought to contain a more precise representation of participating students than rosters from earlier in the school year.

grades 3 to 10, the grades mandated for testing per the 2017 Florida Statutes, s. 1002.395(8)(c)(2). If schools had any missing or invalid student scores, they were instructed to provide an explanation backed by evidence, most commonly in the form of a notarized letter, for each missing or invalid student score.

Participating private school compliance with protocol

Score reporting in 2016-17

A large majority of schools were in compliance with test score reporting for the academic year 2016-17. Regarding test score submission, most schools sent photocopied test score sheets that had been scored by the testing company. In a small number of cases where tests had been scored by the schools or hand-scored, schools were instructed to send detailed test administration and scoring procedures. Throughout the spring and summer of 2017 the Learning Systems Institute followed up with schools that had sent invalid test score results, including missing or incomplete test scores.

Test score sheets were sent to LSI where they were stored in a locked room. As test score data was received, two data entry staff members recorded students' test scores and test information on a spreadsheet saved to a secure password-protected server. The scores were then reconciled with the hard copy scores to ensure the highest accuracy. Score sheets are shredded one year after this double-entry and reconciliation procedure as mandated by s. 1002.22(2)(d) of the Florida Statutes.

To obtain information about prior public schooling records, the electronic

database of students' test scores, including information from student scholarship applications provided by the Scholarship Funding Organizations, was sent to the Florida Department of Education (FLDOE) using its secured file share system. FTC student records were matched to FLDOE records in order to include information about students' FSA scores, public schooling history, free/reduced lunch status, limited English proficiency, and disability status. A unique FLDOE identification number replaced students' identifying information. The FLDOE then returned via secure file share the matched and comparison data that were de-identified and stripped of any personal information. These de-identified data were then used for analysis.

There were 1,461 FTC participating schools with students in the relevant grades in 2016-17. The vast majority of the FTC participating schools provided evidence of test administration consistent with the specifications of the program. Six participating schools, serving 64 testing-eligible students, closed or did not participate in the program following the 2016-17 school year and hence did not provide test scores. Two schools, serving 9 students, did not administer tests to or report scores for any participating students.² There were 55,148 students in relevant grades participating in the FTC program in 2016-17. Valid, legible test scores were received for 52,580 FTC students, which represents 95.8 percent of all expected test scores received.

² LSI reported these non-compliant schools to the Florida Department of Education.

Table 1: Distribution of score reporting percentages: 2016-17 and prior years

	Academic year										
	06-07	07-08	08-09	09-10	10-11	11-12	12-13	13-14	14-15	15-16	16-17
Legible, valid scores received	72.7	92.7	89.8	91.3	93.5	96.4	92.3	90.0	95.9	95.6	95.8
Not enrolled at time of testing	19.5	2.7	5.6	5.8	3.5	2.1	5.1	0.8	0.4	2.2	1.5
Ineligible for testing	0.7	0.9	0.6	0.6	0.4	0.4	1.2	0.4	0.3	0.3	0.4
School closed/suspended	1.3	0.2	0.9	0.9	0.4	0.1	0.7	0.2	0.2	0.1	0.2
Student sick/absent	3.4	1.0	1.9	1.9	0.8	0.9	0.6	0.7	0.6	0.6	0.9
Missing/unusable test	2.5	2.6	1.2	1.2	0.3	0.3	1.2	7.9	2.5	1.1	1.1
Note: Percentages may not add up to 100 due to rounding.											

The rate of legible, valid scores received was high in 2016-17. As seen in Table 1, private schools reported test scores for 95.8 percent of program participants in grades 3-10. This is comparable to the last year's score reporting (95.6 percent). Compared to the last year, the percentage of students not enrolled during testing, because they either left before testing or arrived after testing at the school, was somewhat lower in 2016-17 at 1.5 percent. This rate was 2.2 percent last year.

The other categories of score reporting remained at levels comparable to those observed in recent years. The percentage of missing/unusable tests was 1.1 percent; the rate of sick/absent students was 0.9 percent; the share of students who were at schools that were closed or suspended from program participation was 0.2 percent. Lastly, 0.4 percent of students on the official roster were either deemed

ineligible for test score reporting pursuant to the 2017 Florida Statutes, s. 1002.395(8)(c)(2), or were not enrolled in the school identified on the official rosters.

Table 2: Distribution of percent and number of students with legible, valid scores: 2016-17 and prior years.

	Academic year										
	06-07	07-08	08-09	09-10	10-11	11-12	12-13	13-14	14-15	15-16	16-17
Number of students	9,721	10,734	11,508	15,151	17,724	19,284	26,595	30,036	36,106	43,270	55,148
Number of students with legible, valid scores	7,067	9,949	10,333	13,829	16,575	18,583	24,534	27,020	34,469	41,372	52,580
Percent of students with legible, valid scores	72.7	92.7	89.8	91.3	93.5	96.4	92.3	90.0	95.9	95.3	95.8

In 2016-17 the number of students in relevant grades participating in the program was the highest compared to previous years. As can be seen in Table 2, the number of enrolled students in relevant grades increased over the years and reached 55,148 in 2016-17.³

Comparison of students with legible, valid test scores to scholarship population

Although the rate of successful score reporting was high in 2016-17 at 95.8 percent, there were about 4 percent of students whose expected scores were not received. Thus, it was still important to examine whether the students whose test

³ Although the highest level of score reporting was observed in 2011-12 (96.4 percent), the number of students with legible, valid scores was 18,583 that year. This is almost one third of the number of students with legible, valid scores in 2016-17.

scores were successfully reported are comparable to the population enrolled in 2016-17.

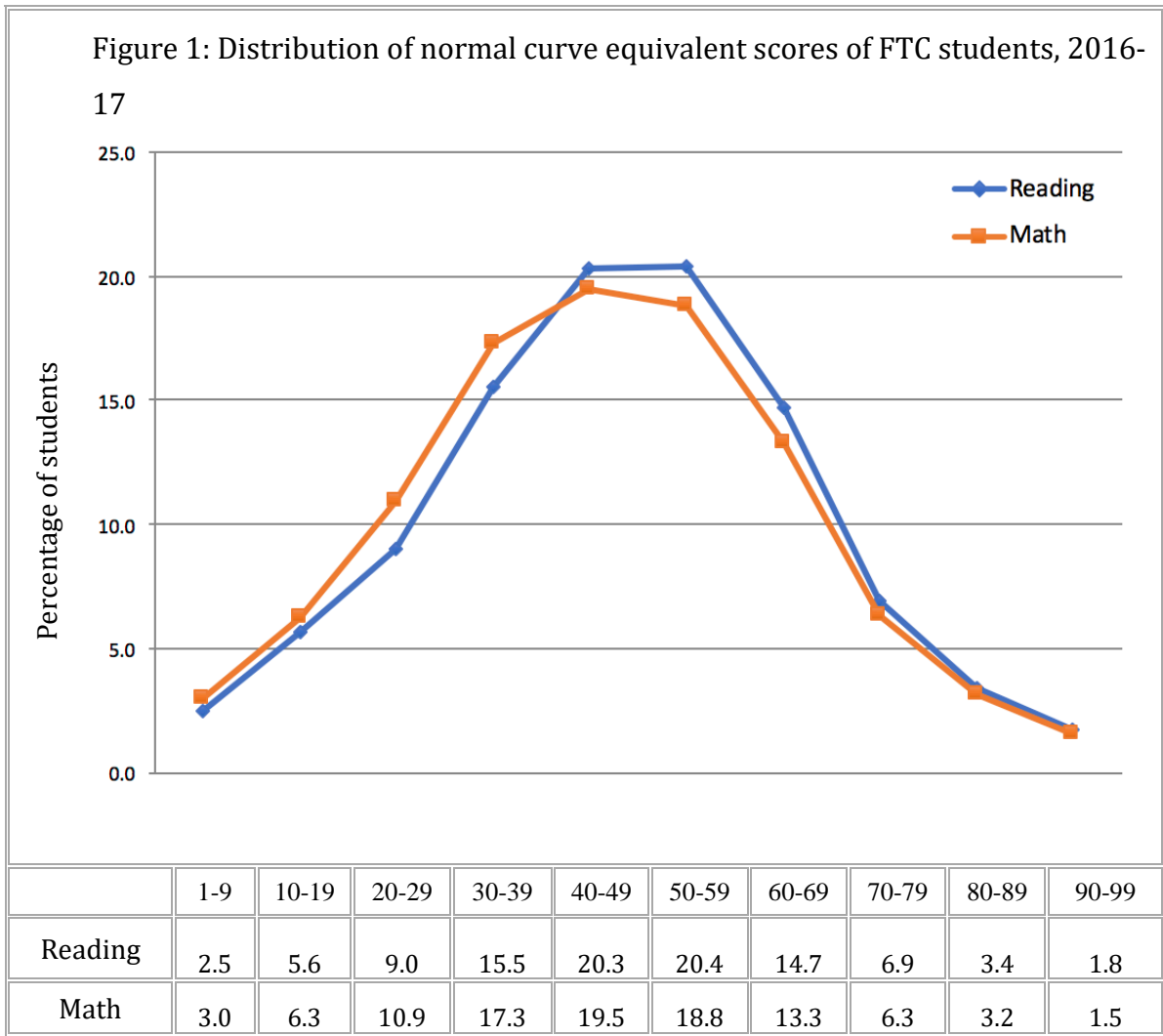
For this analysis, we used data from the families' scholarship applications. We found differences between students whose test scores were successfully reported and those whose scores were not successfully reported in terms of their family incomes, their parents' marital status, their gender and race. This finding was consistent with previous years' findings. Students whose scores were successfully reported come from families with higher incomes (averaging \$29,621 versus \$24,494) and with parents more likely to be married (44.9 percent versus 36.1 percent). Moreover, students whose scores were successfully reported were more likely to be white (27.2 percent) and female (51.6 percent), compared to students with no test scores (23.1 percent white and 48.4 percent female). We cannot make any claims about whether students with missing test scores would have had higher or lower gain scores than those with test scores available.

3. TEST SCORES OF FTC STUDENTS IN 2016-17

We report test scores in the form of the normal curve equivalent (NCE) scores. The NCE is a normalized standard score with a mean of 50 and a standard deviation of 21.06. The scale corresponds to national percentile ranks (NPR) at 1, 50, and 99. As reported in the previous section, schools administered different nationally norm-referenced tests approved by the Florida Department of Education. Reporting test scores as normal curve equivalent scores ensures reasonable comparability across

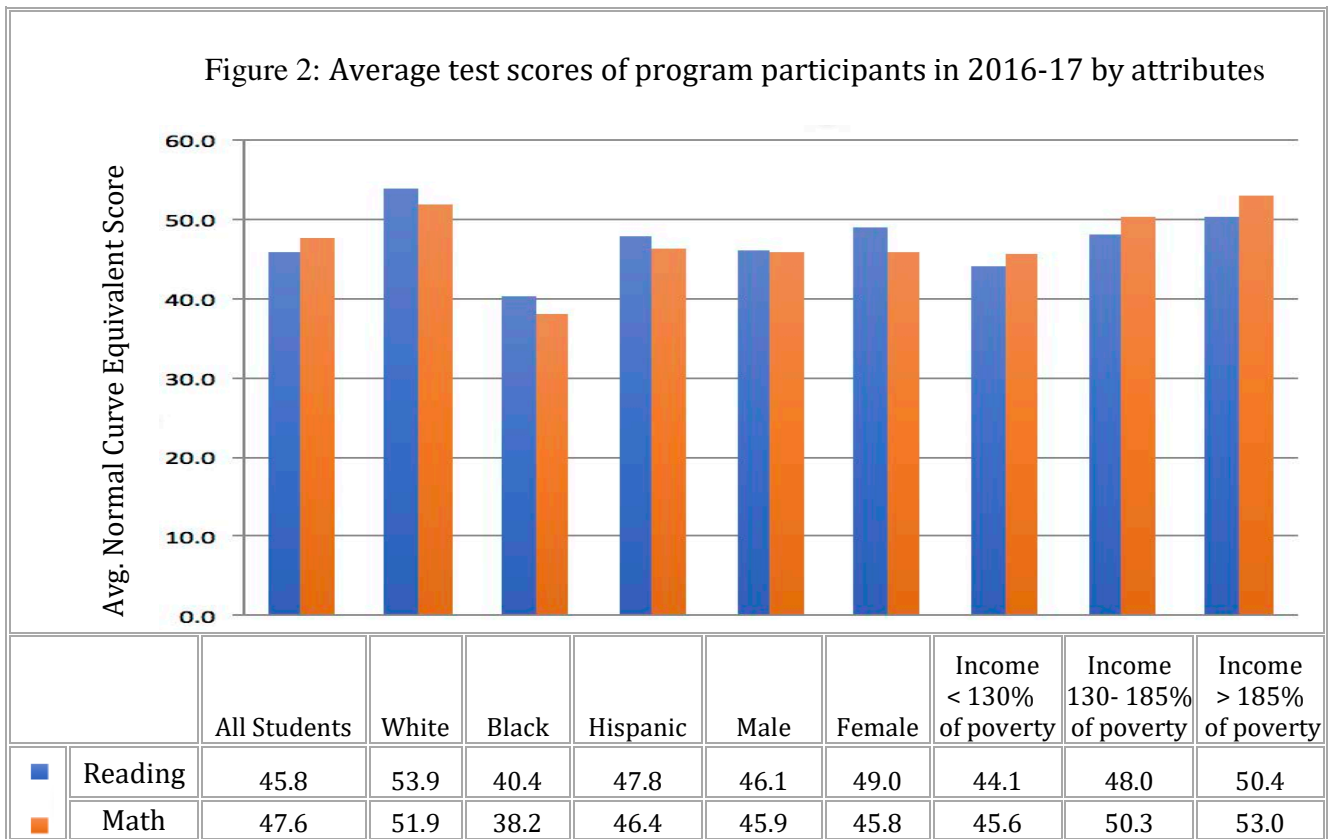
schools and program participants. Moreover, normal curve equivalent scores convey information about students' rankings compared with normal standards.

Figure 1 presents the basic distribution of reading and math scores of FTC students participating in the program in 2016-17. Most of the students were in the middle of the test score distributions. The average normal curve equivalent score for FTC students was 48 in reading and 46 in math in 2016-17. In terms of corresponding national percentile rankings, the typical student in the FTC program scored at the 45th national percentile in reading and the 41st national percentile in math.



Average test scores in 2016-17 by attributes of program participants

We provided a breakdown of test scores of 2016-17 program participants by race/ethnicity, gender, and family income. Family income is expressed in terms of likely eligibility for the federal free or reduced lunch program based upon self-reported income collected from the Scholarship Funding Organizations (SFOs).⁴ Students from families who have incomes below 130 percent of the federal poverty line are eligible for free school meals, while those from families with incomes between 130 and 185 percent of the poverty line are eligible for reduced-price meals.



As seen in Figure 2, white participants had higher mean scores than black and Hispanic participants. While mean scores of males and females were not different in

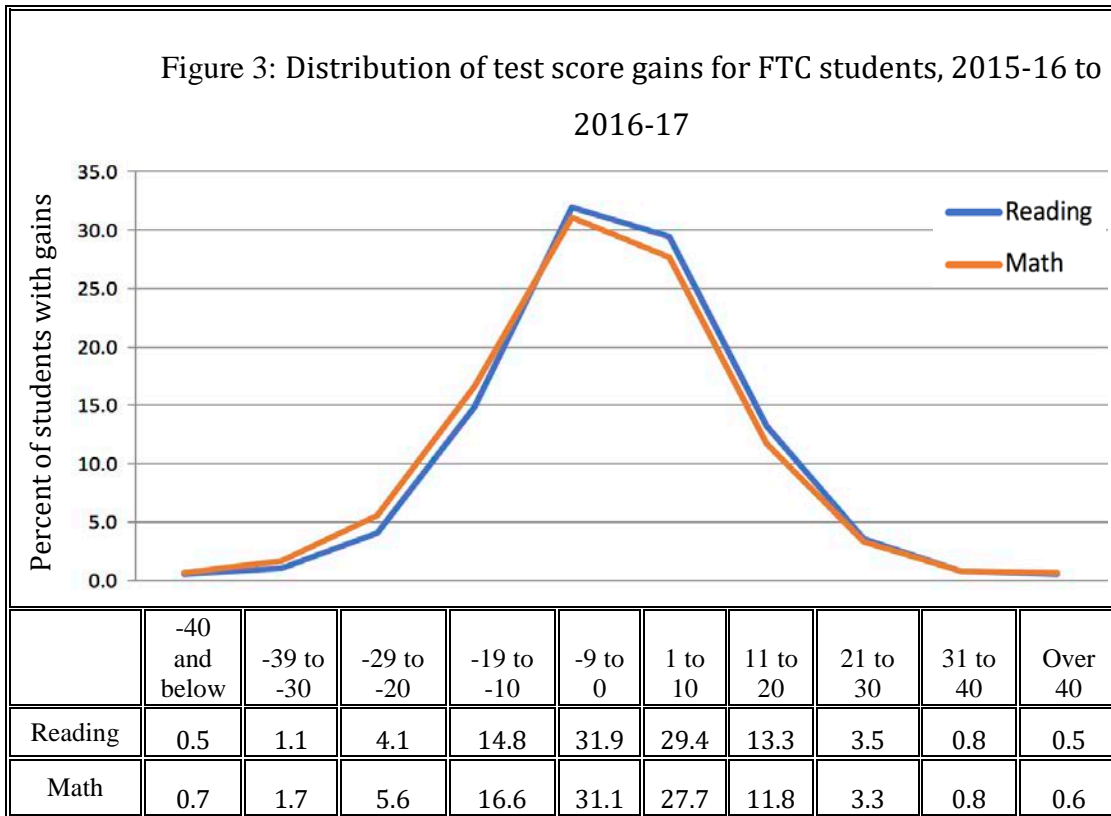
⁴ LSI used data from the SFOs for these analyses.

math, females tended to perform better than males did in reading. Lastly, relatively higher-income families tended to score better than relatively lower-income families. These figures were similar to the figures reported in previous years.

4. GAIN SCORES FROM 2015-16 TO 2016-17

Test score gains for FTC students

Test score gains for FTC students are calculated as required by the 2017 Florida Statutes, s. 1002.395(9)(j). Gain scores can be interpreted as changes in normal curve equivalent scores for program participants from 2015-16 to 2016-17 since test scores in both years are measured in terms of normal curve equivalent scores. We should note that this analysis is vulnerable to ceiling effects (where students whose scores were high in 2015-16 cannot gain much more) and floor effects (where students whose scores were low in 2015-16 cannot lose much more ground). Ceiling and floor effects were of less concern for students whose initial score falls in the middle portions of the initial test score distributions, which was the case for the majority of students participating in the FTC Scholarship Program.



Gain scores were calculated for 30,019 FTC students with legible reading scores and 30,041 FTC students with legible math scores in both 2015-16 and 2016-17. Figure 3 presents the basic distribution of reading and math gain scores of FTC students participating in the program in 2016-17. While most of the students were in the middle of the gain score distributions, considerable variation in the individual student gain scores was observed. The mean gain score for FTC students was - 0.3 normal curve equivalent in reading and -1.2 normal curve equivalent in math. These scores correspond to similar national percentile ranking points. Though this represents a small decline, one can still conclude as in previous reports that the typical FTC student tended to maintain his or her relative position in comparison with others nationwide. It is important to note that these national comparisons pertain to

all students nationally, and not just students from low-income families. However, we cannot make any claims about whether gain scores of FTC students would have been higher or lower if they were compared against only students from low-income families nationally.

School-level differences in average gain scores, 2015-16 to 2016-17

We calculated average gain scores from 2015-16 to 2016-17 at the school level as well. Individual level variation in the gain scores examined in the preceding section was composed of both individual and school level differences. By using gain scores aggregated to the school level, we examined the variation in gain scores across schools.

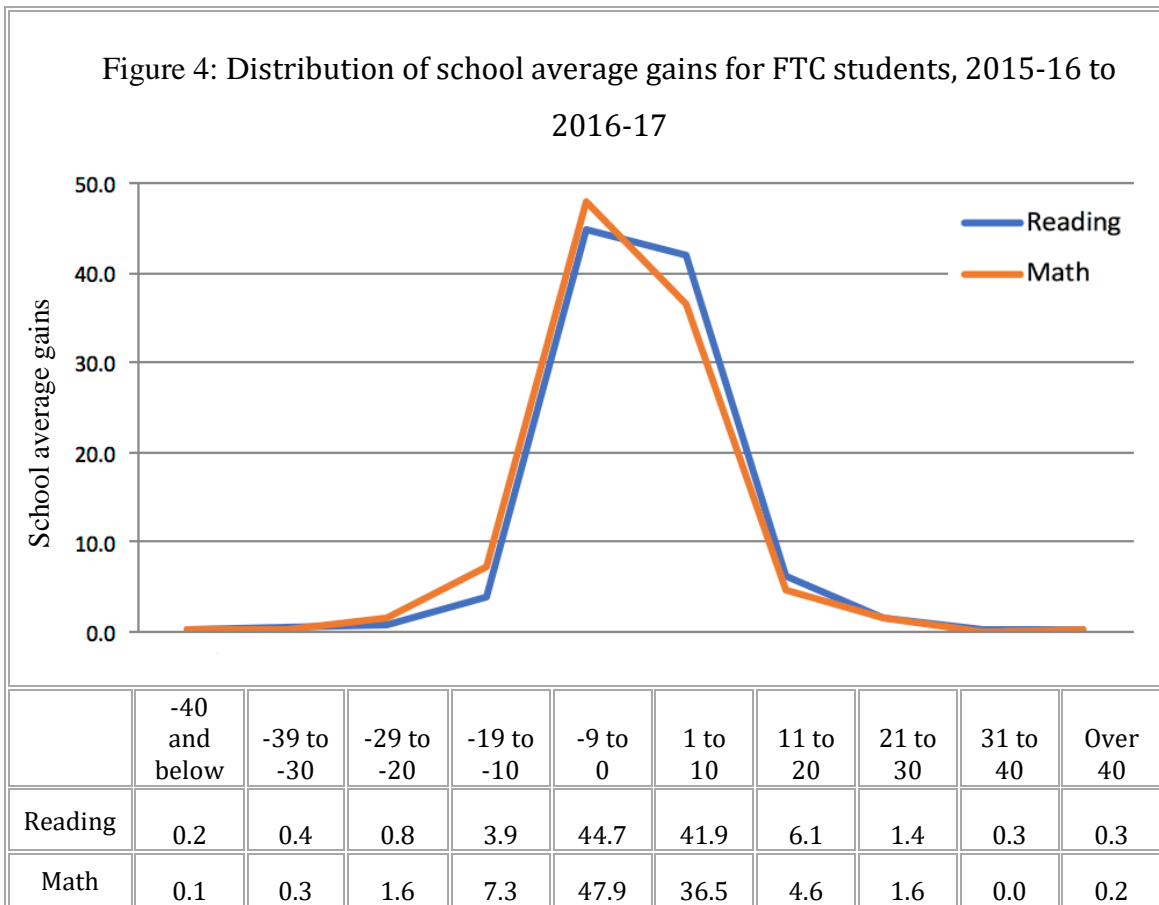
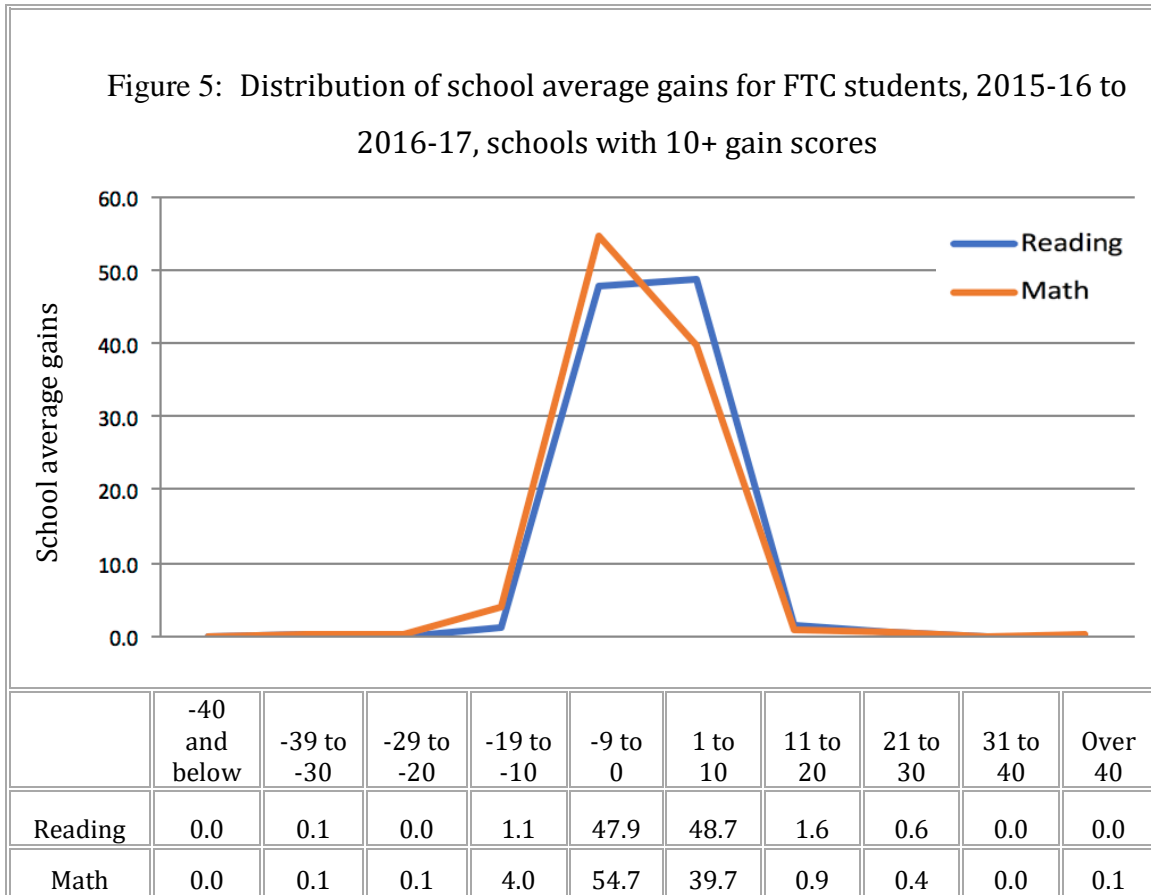


Figure 4 presents the basic distribution of school average reading and math gain scores for FTC students participating in the program in 2016-17. The average gain scores were concentrated in the middle of the distribution. Of the average gain scores, 86.6 percent of the schools had an average gain score in reading between -10 to 10 points. This figure was 84.4 percent in math.



It is important to note that observed between-school variation in Figure 4 doesn't reflect "true" school-level differences since noise in individual test scores is still manifested as part of the school-level average gain scores. The degree to which school-average gains reflect "true" school effects increases as the number of students in the school increases. For example, when we looked at the same distribution only

including schools with more than ten FTC students, the distribution of school-average gains became more compressed. As can be seen in Figure 5, 96.6 percent of school average gains in reading and 94.4 percent of school average gains in math were between -10 to 10 points. In Figure 4, these numbers were 86.6 percent and 84.4 percent, correspondingly. These findings suggest that there was a non-trivial contribution of noise to the between-school variability observed in Figure 4.

Individual school average gain scores, 2015-16 to 2016-17

We calculated average gain scores for schools with 30 or more participating students as required by the relevant Florida statutes. It is important to note that average gain scores are not a definitive measure of a school's performance. They only serve as one among many other indicators of a school's performance.

The average gain score for a school in a single year can be an extremely noisy measure of a school's contribution to student test scores. As discussed in the previous section, this measure is less reliable for schools where a small number of students contribute to the average school gain score. As the number of students gets smaller in a given school, the likelihood of noise dominating the average gain score increases. Examining average gain scores only for schools with 30 or more participating students increased the likelihood of getting a more precise measure of average gain scores of individual schools.

In addition to the average gain scores for 2016-2017, we also calculated average gain scores over three years from 2014-15 through 2016-17. This added extra observations for schools and hence provided more accurate average gain scores for individual schools. Moreover, school gain scores calculated by a three-year

moving average of gain scores is less likely driven by “regression to the mean” compared to one-year average gain scores. Regression to the mean is the phenomenon that if a variable, such as a test score, is extreme on its first measurement, it will tend to be closer to the average on its second measurement and, if it is extreme on its second measurement, it will tend to have been closer to the average on its first. In this context, if a school had particularly high average scores in 2015-16, it is likely to observe a negative average gain score for that school in 2016-17. On the other hand, if a school had particularly low average scores in 2015-16, it is likely to observe a positive average gain score in 2016-17 for that school. Using average gain scores across the last three years balance out particularly positive and particularly negative scores over time, and thus helps to lessen the likelihood of making faulty inferences driven by regression to the mean. The risk of having faulty observed results due to regression to the mean is another reason to treat one-year average gain scores for individual schools extremely cautiously.

Average gain scores for the 342 schools that submitted valid test scores for 30 or more students in both 2015-16 and 2016-17 are reported in the Appendix. Gain scores are reported for reading, math, and combined reading and math (by averaging schools’ average reading and math scores) for 2016-17 as well as for the last three years’ average. Since a three-year moving average is a more reliable measure of a school’s average gain scores than one year’s gain scores, we based inferences on the three-year average gain scores. We identified schools with average gain scores that are statistically distinguishable from zero (at the 95 percent confidence level in a two-

tailed test). We highlighted the cells if the three years average gain score—either positively or negatively—was statistically significant from zero.

When interpreting gain scores, one should keep in mind that an average gain score of zero means that, on average, students in that school are maintaining their position relative to the national distribution. It doesn't mean that students in that school are not gaining. If a school has statistically positive average gain, it means that, on average, students in that school improved their position in the national distribution (with 95% certainty). If a school has statistically negative average gain, it means that, on average, students in that school worsened their position in the national distribution (with 95% certainty).

5. ATTRIBUTES OF NEW PROGRAM PARTICIPANTS IN 2016-17

Previous reports noted that newly participating FTC students tended to be lower achieving and more disadvantaged than students who were eligible for the program but did not participate. We examined attributes of new FTC students in 2016-17 in order to see whether they were systematically different from eligible non-participant students before participating in the FTC program in 2016-17 as well.

In order to make plausible comparisons among students who spent the 2015-16 academic year in Florida public schools, we compared students who entered the FTC Scholarship Program in 2016-17 versus subsidized school meal eligible students who did not enter the program in that year but stayed free or reduced-price lunch eligible in 2016-17. We excluded students with disabilities who could participate in the McKay Scholarship Program. We limited the analysis to students who had taken

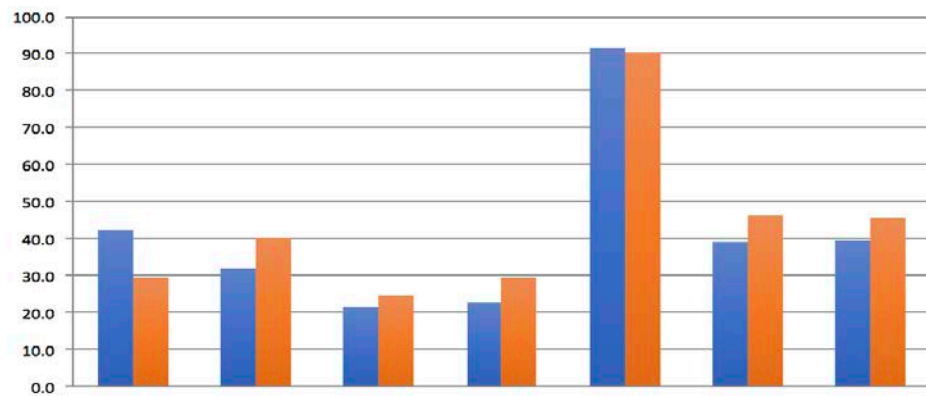
either a reading or math test in public school in 2015-16. We also restricted analysis to students who would be in grade 10 or below in 2016-17.⁵ With these criteria, we compared 5,549 new students in the FTC Scholarship program in 2016-17 versus 656,220 students who remained in the public schools and continued on subsidized school lunches in 2016-17. We used Florida Department of Education records for these comparisons.

Comparison of characteristics of new FTC students and non-participant students

Newly participating FTC students in 2016-17 were more likely to be black and less likely to be Hispanic or white than students who were eligible but did not participate as seen in Figure 6. Also, they were less likely to be English-language learners than were non-participants. While both new FTC students and non-participant students were eligible for subsidized lunch in the 2015-16 school year, the share of new FTC students who were free-lunch eligible was somewhat higher than the share of free-lunch eligible, non-participant students. Lastly, compared to eligible non-participant students, new FTC students had poorer test performance both in ELA and math before entering the FTC program.

⁵ Students who were in grade 10 in 2015-16 are excluded since they are not tested in 2016-17.

Figure 6: Comparison of prior year characteristics of new FTC students to "income eligible" non-participant students, 2016-17

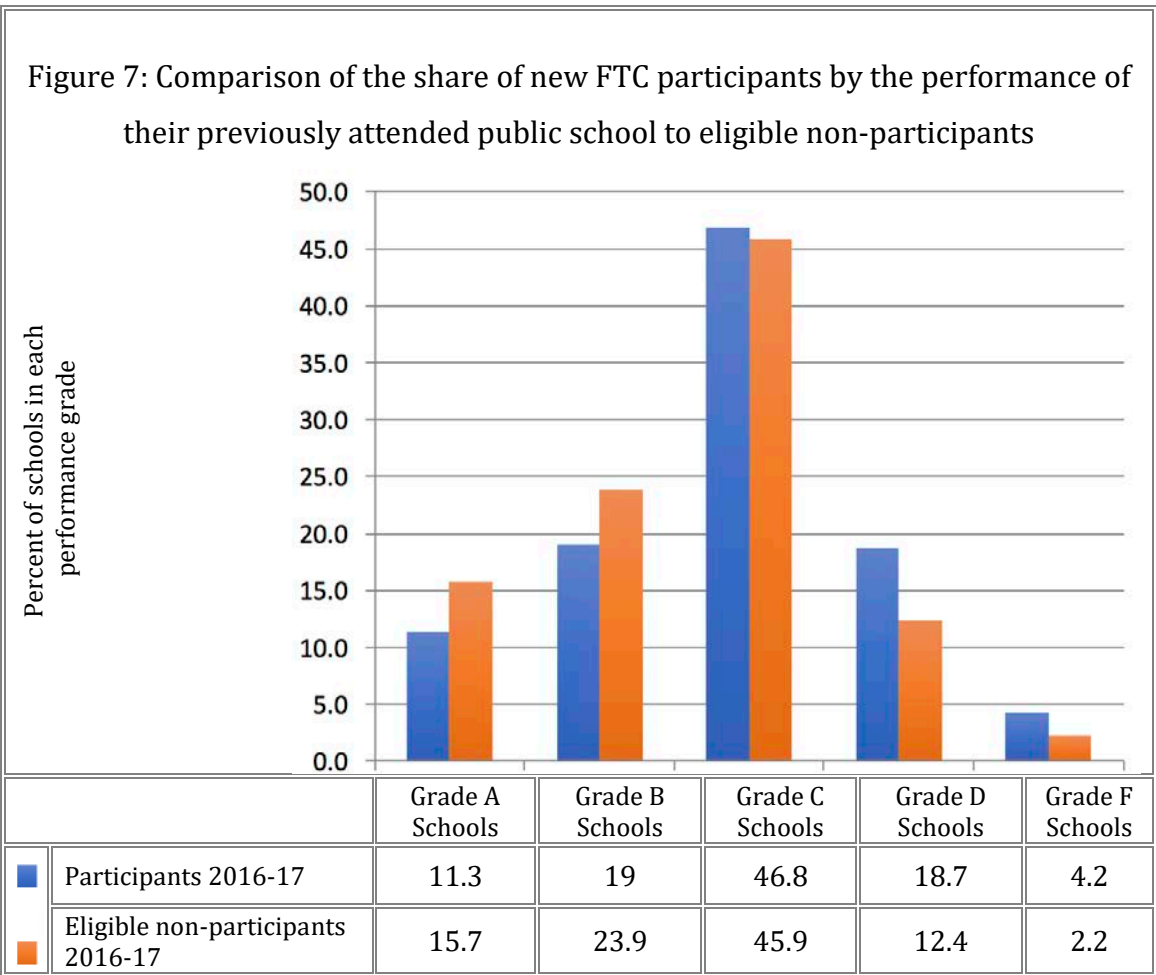


		Percent Black	Percent Hispanic	Percent White	Percent ESL	Percent Free Lunch	Math Percentile (FSA)	ELA Percentile (FSA)
■	Participants 2016-17	42.3	32.0	21.4	22.8	91.5	39.1	39.6
■	Eligible non-participants 2016-17	29.7	40.2	24.7	29.7	90.3	46.2	45.6

Comparison of new FTC students and non-participant students in terms of performance of their schools in 2015-16

In Florida, each school is assigned a school grade (A-F) based on student performance. We compared new FTC students and eligible non-participant students in terms of the performance of the schools that they attended in the 2015-16 school year. We observed that students who entered the FTC program in 2016-17 came from lower-performing schools. On a scale of A-F, with A being the highest performing schools, 11.3 percent of new FTC students were in schools graded "A", before attending a school in the FTC program, while 15.7 percent of eligible non-participant

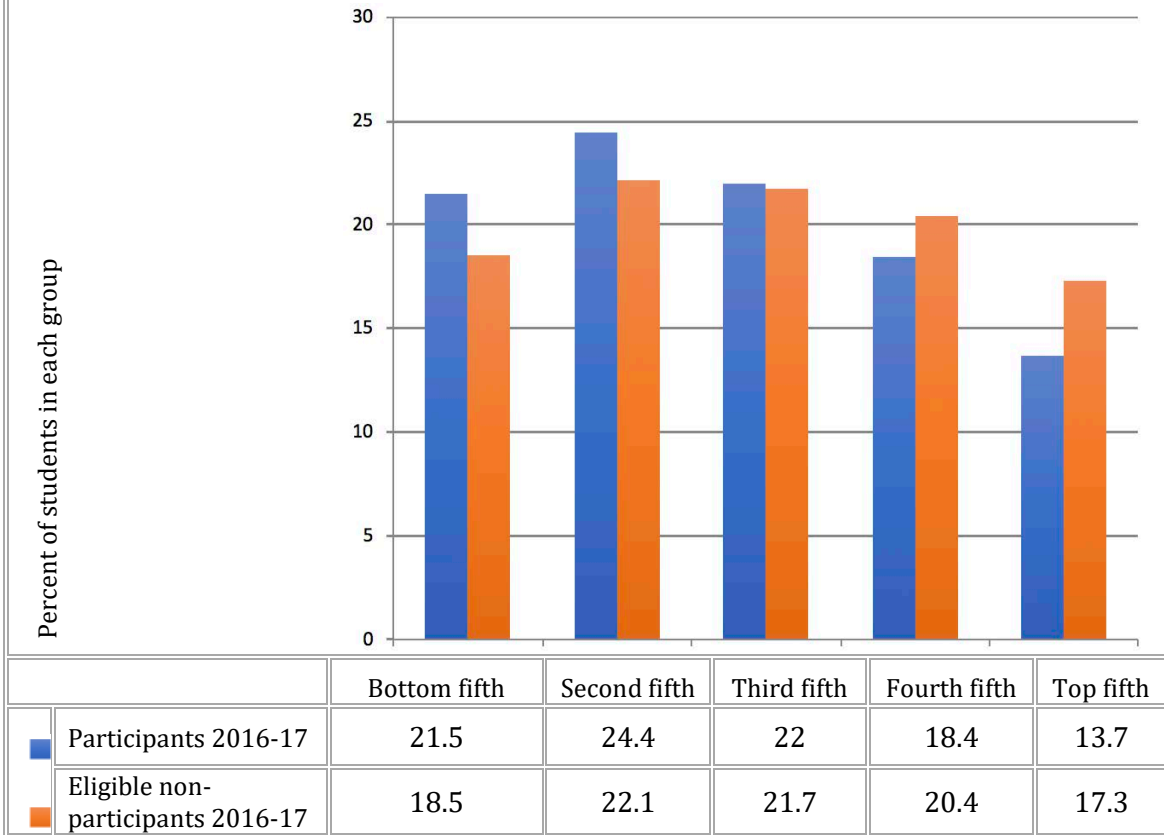
students were in schools graded “A” in the 2015-16 school year. At the other end of the spectrum, 22.9 percent of new FTC students were in schools graded "D" or "F", as compared with 14.6 percent of eligible non-participant students who were in schools graded "D" or "F" (see Figure 7).



Comparison of new FTC students and non-participant students within their schools in terms of performance in 2015-16

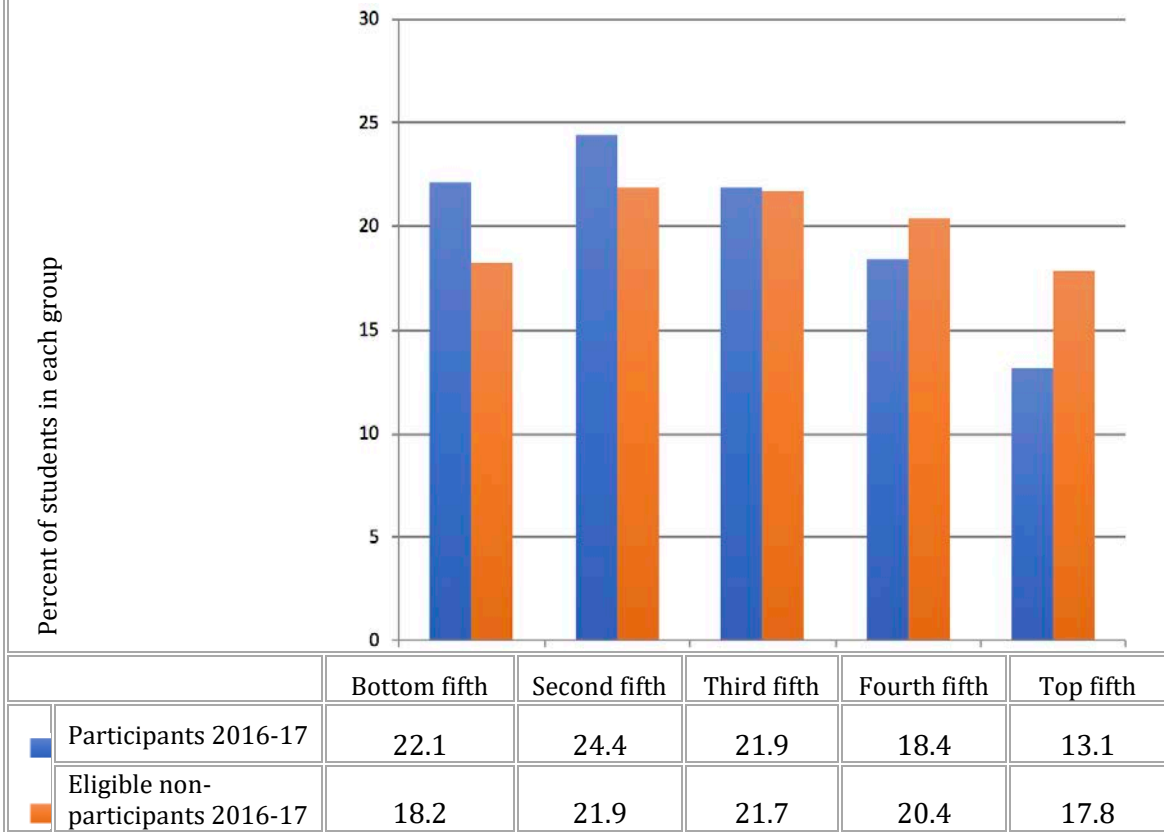
We also examined new FTC students' performance relative to eligible non-participant students in their own schools before entering the FTC program. In the previous years, FTC students were more likely to be low performing students in their schools before attending the program regardless of the performance of the school that they were in. A similar pattern was observed this year (see Figure 8). The percent of new FTC students in the bottom fifth of their prior public school's ELA FSA test score distribution was higher (21.5 percent) than non-participating students (18.5 percent). At the top fifth of the distribution, as observed in the previous years, the percentage of new FTC students was lower (13.7 percent) compared to non-participating students (17.3 percent).

Figure 8: Comparison by quintile of new FTC students in 2016-17 to eligible non-participant students of school ELA FSA score distribution



For the math FSA test score distribution; 22.1 percent of new FTC students were in the bottom fifth of their prior public school’s math distribution, while 18.2 percent of non-participating eligible students were in the bottom fifth of the distribution. At the top of the math test score distribution, 13.1 percent of new FTC students were in the top fifth of the distribution, as compared with 17.8 percent of eligible non-participating students in the top fifth of the distribution (see Figure 9).

Figure 9: Comparison by quintile of new FTC students in 2016-17 to eligible non-participant students of school math FSA score distribution



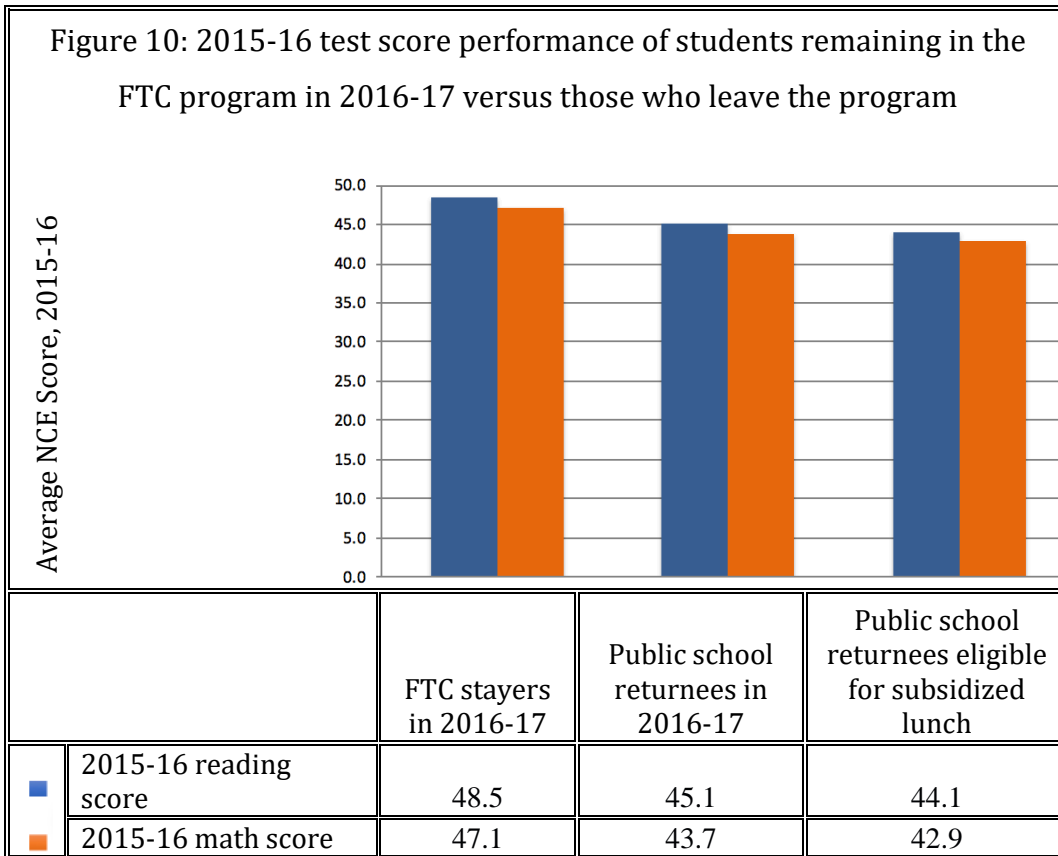
Findings regarding the attributes of new program participants suggest that new FTC students in 2016-17 - compared to free-lunch eligible, non-participant students- were relatively more disadvantaged and lower-performing prior to entering the FTC program. Moreover, they were more likely to come from low performing public schools and less likely to be high performing students in their prior public schools before attending the program. This observation has not changed over time as similar figures were observed in the previous program reports.

6. PERFORMANCE OF PROGRAM PARTICIPANTS WHO RETURN TO FLORIDA PUBLIC SCHOOLS

In this section we compared FTC students who returned to public schools in 2016-17 after participating in the FTC program to those who remained in the FTC program in 2016-17. We also compared program returnees to Florida public school students who never left the public schools. It is important to note that one cannot make any claims about the effects of participation in the FTC program based on these comparisons, as there are likely factors beyond FTC participation that may influence students' performance. These comparisons only provide additional insights about the performance of the students who participate in the FTC program.

Comparison of 2015-16 performance of public school returnees and FTC stayers in 2016-17

We first compared FTC students who returned to the public school system in Florida in 2016-17 versus those who remained in private schools under the FTC program in terms of their national norm-referenced test performance in 2015-16. The typical student who left the program scored at the 45.1st normal curve equivalent in reading and 43.7th normal curve equivalent in math in 2015-16 while the typical FTC student who remained in the program in 2016-17 scored at the 48.5th normal curve equivalent in reading and the 47.1st normal curve equivalent in math (See Figure 10).



This finding can be an understatement of the difference between these two groups, since all students who remained in the FTC program were still income-eligible to participate while some students who left the program may not have met eligibility criteria anymore in 2016-17. In order to have more comparable groups in terms of income range, we limited the public school returnees to those participating in the National School Lunch Program in 2016-17. We found that the average returnee who is free/reduced lunch eligible in 2016-17 scored at the 44.1st normal curve equivalent in reading and scored at the 42.9th normal curve equivalent in math in 2015-16, which was somewhat lower than the performance of all returnees as expected.

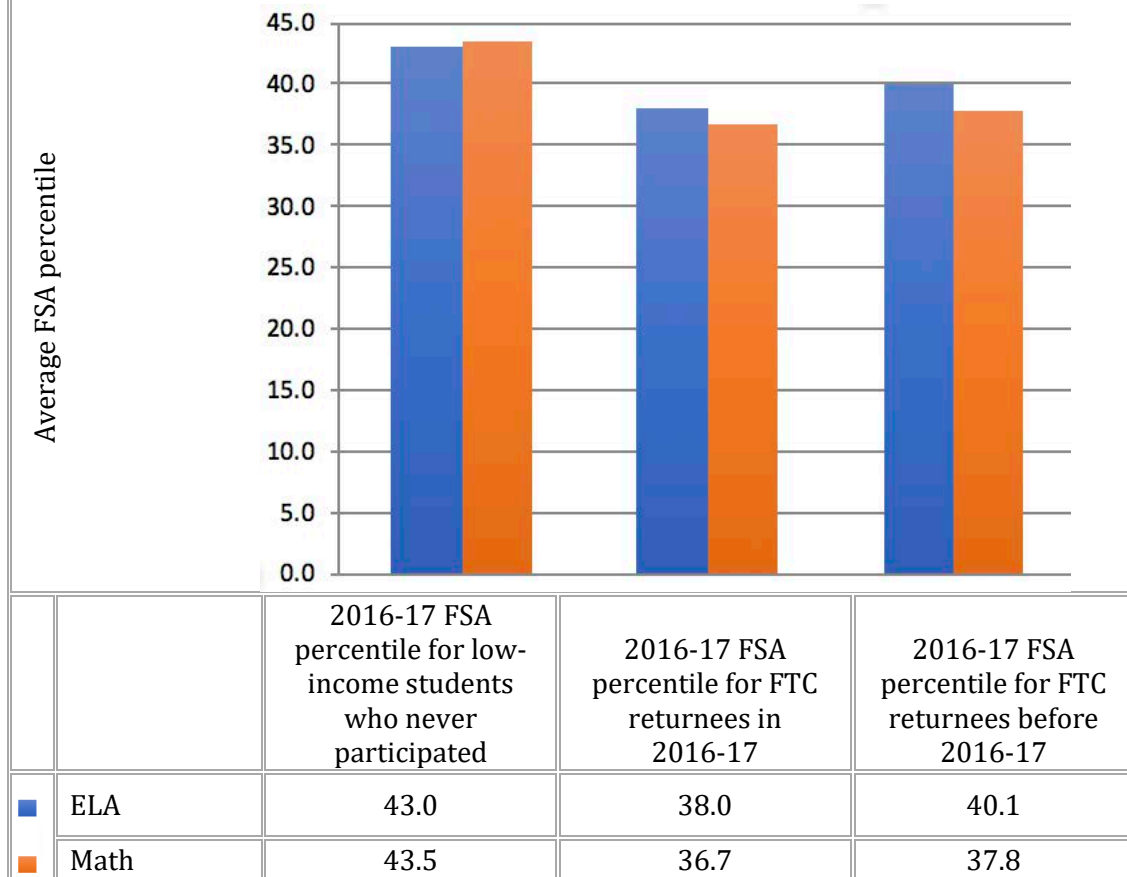
These findings suggest that as lower-performing public school students are more likely to leave public schools to attend a private school under the FTC program,

FTC students who struggle in private schools are somewhat more likely to return to the public schools. This is consistent with previous years' observations.

Comparison of 2016-17 FSA performance of public school returnees and low income public school students

Next, we compared the performance of FTC students who returned to the public schools and the performance of subsidized meal-eligible public school students who never participated in the FTC program. As can be seen in Figure 11, FTC program participants who return to the public schools performed worse on the FSA than did other subsidized meal recipients who never participated in the FTC program. The difference is particularly large for FTC returnees in 2016-17, who performed at the 38.0th Florida percentile in ELA and 36.7th Florida percentile in math while public school students who never participated in the FTC program performed at the 43.0rd Florida percentile in ELA and 43.5th Florida percentile in math in 2016-17.

Figure 11: 2016-17 FSA performance of FTC students returning to public schools in Florida



As we mentioned before, based on these comparisons one cannot make any claims about the effects of participation in the FTC program since evidence suggests that FTC students who returned to the public schools in 2016-17 and public school students who never participated in the FTC program represent two different populations of students. Findings indicated that poorly performing public school students are more likely to participate in the program in the first place. Moreover, FTC students who return to public schools tend to be those who are performing worse than the average FTC student. Based on these observations, we cannot associate poor

performance of FTC returnees with possible negative effects of the FTC program on participating students.

7. CONCLUSION

This report shares findings on the compliance and performance of private schools that participated in the Florida Tax Credit Scholarship Program in 2016-17. Compliance with program testing requirements was high in 2016-17. Private schools reported test scores for 95.8 percent of program participants in grades 3-10.

FTC students scored at the 48th normal curve equivalent in reading and the 46th normal curve equivalent in math in 2016-17, which corresponds to the 45th national percentile in reading and the 41st national percentile in math. Furthermore, regarding gain scores, the typical FTC student tended to maintain his or her relative position in comparison with all students nationally both in math and reading. It is important to note that these national comparisons pertain to all students nationally, and not just students from low-income families. However, we cannot make any claims about whether gain scores of FTC students would have been higher or lower if they were compared against only students from low-income families nationally.

As in prior years, lower-performing public school students eligible for the FTC program were more likely to attend a private school under the FTC program and FTC students who struggle in these schools were more likely to return to the public schools. FTC students who returned to the public schools in Florida had substantially lower test scores than other subsidized meal-eligible public school students who

never participated in the FTC program. However, based on the available evidence, poor performance of FTC returnees cannot be associated with possible negative effects of the FTC program on participating students. Given selection of students into and out of the FTC program, the former FTC students who returned to public schools would have been expected to perform more poorly than the typical low-income public school students.

APPENDIX

Appendix Table: Average gain scores in 2016-17 and three-year moving average of gain scores from 2014-15 to 2016-17 for schools with 30 or more students with gain scores in 2016-17.

Notes: Cells report average gain scores. We shade cells where the difference between an individual school's three year moving average gain score is statistically significant from zero (at the 95 percent confidence interval).

These school-level gain scores are not intended to be a comprehensive analysis of school performance.

As noted in the main body of this report, average gain scores are not a definitive measure of a school's performance. They only serve as one among many other indicators of a school's performance. The average gain score for a school in a single year can be an extremely noisy measure of a school's contribution to student test scores. This measure is less reliable for schools where a small number of students contribute to the average school gain score. As the number of students gets smaller in a given school, the likelihood of noise dominating the average gain score increases. For this reason, we also compute the three-year moving average gain score. However, when interpreting gain scores, one should keep in mind that an average gain score of zero means that, on average, students in that school are maintaining their position in the national distribution. It doesn't mean that students in that school are not gaining.

SCHOOL NAME	CITY	NUMBER OF GAIN SCORES OBSERVED		AVERAGE GAIN SCORE IN 2016-17			AVERAGE GAIN SCORE FROM 2014-15 TO 2016-17		
		2016-17 SCHOOL YEAR	BETWEEN 2014-15 AND 2016-17	READING+ MATH COMBINED	READING	MATH	READING+ MATH COMBINED	READING	MATH
ABUNDANT LIFE CHRISTIAN ACADEMY	MARGATE	97	243	-7.52	-4.19	-10.87	-2.6	-0.56	-4.68
ACADEMY PREP CENTER OF ST. PETERSBURG	ST. PETERSBURG	56	175	-1.34	-0.71	-1.96	1.27	1.39	1.15
ACADEMY PREP CENTER OF TAMPA INC.	TAMPA	81	226	2.71	1.72	3.70	1.23	1.03	1.43

Appendix continued

SCHOOL NAME	CITY	NUMBER OF GAIN SCORES OBSERVED		AVERAGE GAIN SCORE IN 2016-17			AVERAGE GAIN SCORE FROM 2014-15 TO 2016-17		
		2016-17 SCHOOL YEAR	BETWEEN 2014-15 AND 2016-17	READING+ MATH COMBINED	READING	MATH	READING+ MATH COMBINED	READING	MATH
ADVANCE ACHIEVERS ACADEMY	FLORIDA CITY	35	83	-7.37	-6.19	-7.06	-0.51	0.24	-0.79
ADVENTURE CHRISTIAN ACADEMY	TAVARES	38	90	-0.57	1.08	-2.21	-2.56	-1.7	-3.41
AL-FURQAN ACADEMY	JACKSONVILLE	34	79	-3.60	1.15	-8.35	-2.73	0.92	-6.39
ALAZHAR SCHOOL	TAMARAC	78	203	2.56	3.74	1.37	2.66	1.05	4.08
ALETHEIA CHRISTIAN ACADEMY	PENSACOLA	41	104	0.37	0.51	-0.40	-0.87	-0.17	-1.73
ALL SAINTS CATHOLIC SCHOOL	SUNRISE	30	56	0.68	3.63	-2.27	1.63	1.41	1.84
ALL SAINTS' ACADEMY	WINTER HAVEN	33	75	-1.86	-1.82	-1.91	-2.61	-1.8	-3.43
ALTAMONTE CHRISTIAN SCHOOL	ALTAMONTE SPRINGS	49	126	-6.74	-6.61	-6.88	-2.06	-1.99	-2.2
AMERICAN CHRISTIAN SCHOOL ART CENTER	HIALEAH	56	156	-2.13	-2.04	-2.41	-0.49	0.38	-1.38
AMERICAN YOUTH ACADEMY INC.	TAMPA	153	389	2.24	2.78	1.69	0.87	1.32	0.44

Appendix continued

SCHOOL NAME	CITY	NUMBER OF GAIN SCORES OBSERVED		AVERAGE GAIN SCORE IN 2016-17			AVERAGE GAIN SCORE FROM 2014-15 TO 2016-17		
		2016-17 SCHOOL YEAR	BETWEEN 2014-15 AND 2016-17	READING+ MATH COMBINED	READING	MATH	READING+ MATH COMBINED	READING	MATH
ANNUNCIATION CATHOLIC SCHOOL	MIDDLEBURG	41	103	4.06	5.12	3.00	0.43	-0.4	1.26
ANNUNCIATION SCHOOL	WEST HOLLYWOOD	65	165	1.37	0.66	2.08	-0.01	-0.28	0.26
ARCHBISHOP CURLEY/NOTRE DAME HIGH SCHOOL	MIAMI	81	235	0.64	0.98	0.02	-2.36	-1.47	-3.23
ARCHBISHOP EDWARD A. MCCARTHY HIGH SCHOOL	SOUTHWEST RANCHES	67	97	-1.93	2.51	-6.37	-1	1.27	-3.27
ASBURY CHRISTIAN SCHOOL	HIALEAH	40	75	-5.73	-7.50	-3.95	-2.74	-2.99	-2.76
ASCENSION CATHOLIC SCHOOL	MELBOURNE	35	87	-2.27	-0.91	-3.63	-0.28	-1.17	0.61
ASSUMPTION CATHOLIC SCHOOL	JACKSONVILLE	32	53	-0.73	1.00	-2.47	0.3	2.08	-1.47
ATLANTIC CHRISTIAN ACADEMY OF THE PALM BEACH	WEST PALM BEACH	72	156	-4.86	-4.90	-4.64	-2.04	-2.41	-1.62
AVANT SCHOOL OF EXCELLENCE	FLORIDA CITY	34	50	-7.75	-8.89	-7.71	-4.87	-5.18	-5.38

Appendix continued

SCHOOL NAME	CITY	NUMBER OF GAIN SCORES OBSERVED		AVERAGE GAIN SCORE IN 2016-17			AVERAGE GAIN SCORE FROM 2014-15 TO 2016-17		
		2016-17 SCHOOL YEAR	BETWEEN 2014-15 AND 2016-17	READING+ MATH COMBINED	READING	MATH	READING+ MATH COMBINED	READING	MATH
BAPTIST TEMPLE SCHOOL	ORLANDO	32	98	4.13	4.78	3.47	3.4	2.62	4.25
BARNABAS CHRISTIAN ACADEMY INC.	PORT ST LUCIE	36	71	0.81	2.78	-1.17	-0.13	0.54	-0.79
BEREAN CHRISTIAN SCHOOL	WEST PALM BEACH	77	182	-0.91	-0.25	-1.48	-0.26	0.4	-0.82
BETESDA CHRISTIAN SCHOOL	OPA LOCKA	53	152	-2.41	1.92	-6.74	-0.63	1.14	-2.41
BETH JACOB HIGH SCHOOL INC.	NORTH MIAMI BEACH	93	207	-1.40	-0.56	-2.40	-3.13	-2.47	-3.88
BETHLEHEM JUNIOR ACADEMY	TAMARAC	39	88	1.71	1.85	1.56	1.13	1.25	1.01
BISHOP JOHN J. SNYDER HIGH SCHOOL	JACKSONVILLE	37	89	0.42	1.97	-1.14	-0.04	1.12	-1.21
BISHOP KENNY HIGH SCHOOL	JACKSONVILLE	74	153	0.97	3.65	-1.70	0.61	2.72	-1.5
BISHOP MOORE CATHOLIC HIGH SCHOOL	ORLANDO	50	90	-2.71	-1.32	-4.10	-2.54	-0.78	-4.3
BLESSED TRINITY	OCALA	100	252	-0.02	-0.64	0.61	-1.56	-1.81	-1.31

Appendix continued

SCHOOL NAME	CITY	NUMBER OF GAIN SCORES OBSERVED		AVERAGE GAIN SCORE IN 2016-17			AVERAGE GAIN SCORE FROM 2014-15 TO 2016-17		
		2016-17 SCHOOL YEAR	BETWEEN 2014-15 AND 2016-17	READING+ MATH COMBINED	READING	MATH	READING+ MATH COMBINED	READING	MATH
BLESSED TRINITY CATHOLIC	JACKSONVILLE	36	92	-0.46	-0.69	-0.22	0.55	0.01	1.09
BOCA RATON CHRISTIAN SCHOOL	BOCA RATON	83	157	-2.07	-2.43	-1.71	-1.2	-0.66	-1.61
BRADENTON CHRISTIAN SCHOOL	BRADENTON	76	183	-0.14	0.96	-1.24	-0.85	-1.55	-0.15
BRIDGE TO INDEPENDENCE INC.	ORLANDO	42	101	-1.38	2.12	-4.88	-2.42	-0.06	-4.81
BRITO MIAMI PRIVATE SCHOOL	MIAMI	55	167	-2.28	-1.20	-3.36	1.3	1.54	1.13
BROWARD JUNIOR ACADEMY	PLANTATION	80	219	-3.82	-1.10	-6.54	-2.12	-2.48	-1.74
BRUSH ARBOR CHRISTIAN SCHOOL	ORLANDO	54	176	-4.43	-6.13	-2.93	-1.91	-2.66	-1.5
CALVARY CHAPEL ACADEMY	WEST MELBOURNE	69	164	4.91	7.70	2.74	0.52	0.75	0.51
CALVARY CHRISTIAN ACADEMY	FORT WALTON BEACH	30	302	-3.23	-2.43	-3.75	-2.71	-1.7	-3.81

Appendix continued

SCHOOL NAME	CITY	NUMBER OF GAIN SCORES OBSERVED		AVERAGE GAIN SCORE IN 2016-17			AVERAGE GAIN SCORE FROM 2014-15 TO 2016-17		
		2016-17 SCHOOL YEAR	BETWEEN 2014-15 AND 2016-17	READING+ MATH COMBINED	READING	MATH	READING+ MATH COMBINED	READING	MATH
CALVARY CHRISTIAN ACADEMY	FT LAUDERDALE	139	159	-3.65	-3.39	-4.13	-1.85	-1.32	-2.31
CALVARY CHRISTIAN ACADEMY	ORMOND BEACH	61	83	-5.39	-2.84	-7.95	-1.23	0.18	-2.56
CANDLELIGHT CHRISTIAN ACADEMY	LAKE WALES	55	147	-4.95	-3.29	-6.62	-1.34	-0.99	-1.69
CARDINAL GIBBONS HIGH SCHOOL	FORT LAUDERDALE	55	123	-0.49	3.64	-4.62	3.65	5.86	1.41
CEDAR CREEK CHRISTIAN SCHOOL	JACKSONVILLE	53	144	-0.82	-1.72	0.08	-0.38	-0.62	-0.11
CEDAR HILLS BAPTIST CHRISTIAN SCHOOL	JACKSONVILLE	53	138	0.50	-0.67	1.64	0.28	0.34	0.21
CENTRAL BAPTIST CHRISTIAN SCHOOL	BRANDON	75	158	-0.33	1.67	-2.33	-1.14	0.8	-3.08
CENTRAL FLORIDA CHRISTIAN ACADEMY	ORLANDO	43	105	0.22	1.56	-1.12	1.07	2.92	-0.79
CENTRAL POINTE CHRISTIAN ACADEMY	KISSIMMEE	76	211	0.38	-1.12	1.88	0.39	0.44	0.34

Appendix continued

SCHOOL NAME	CITY	NUMBER OF GAIN SCORES OBSERVED		AVERAGE GAIN SCORE IN 2016-17			AVERAGE GAIN SCORE FROM 2014-15 TO 2016-17		
		2016-17 SCHOOL YEAR	BETWEEN 2014-15 AND 2016-17	READING+ MATH COMBINED	READING	MATH	READING+ MATH COMBINED	READING	MATH
CENTRAL POINTE CHRISTIAN ACADEMY POINCIANA	KISSIMMEE	55	55	-1.59	-1.51	-1.67	-1.59	-1.51	-1.67
CHAMINADE-MADONNA COLLEGE PREPARATORY	HOLLYWOOD	34	55	-0.15	3.47	-3.76	0.33	3.75	-3.09
CHAMPAGNAT CATHOLIC SCHOOL OF HIALEAH	HIALEAH	58	158	7.32	5.03	9.85	2.93	2.16	3.56
CHILDREN'S RAINBOW DAYSCHOOL ACADEMY	GOULDS	46	137	3.67	2.33	5.02	1.29	1.84	0.74
CHRIST THE KING CATHOLIC	JACKSONVILLE	31	86	-2.15	-0.16	-4.13	-1.94	-2.73	-1.15
CHRISTIAN HERITAGE ACADEMY	JACKSONVILLE	54	123	-1.67	-0.78	-2.56	-0.81	0.19	-1.8
CHRISTOPHER COLUMBUS HIGH SCHOOL	MIAMI	55	114	0.73	1.65	-0.20	-0.32	0.91	-1.56
CITI CHRISTIAN ACADEMY	MIAMI	35	47	-3.31	-2.20	-3.86	-3.3	-1.57	-4.58
CITY OF LIFE CHRISTIAN ACADEMY	KISSIMMEE	91	270	1.12	0.81	1.28	-0.96	-0.23	-1.75

Appendix continued

SCHOOL NAME	CITY	NUMBER OF GAIN SCORES OBSERVED		AVERAGE GAIN SCORE IN 2016-17			AVERAGE GAIN SCORE FROM 2014-15 TO 2016-17		
		2016-17 SCHOOL YEAR	BETWEEN 2014-15 AND 2016-17	READING+ MATH COMBINED	READING	MATH	READING+ MATH COMBINED	READING	MATH
CLASSICAL CHRISTIAN SCHOOL FOR THE ARTS INC.	PINELLAS PARK	51	136	1.72	1.10	2.33	0.9	0.65	1.15
COLONIAL CHRISTIAN SCHOOL	HOMESTEAD	76	197	-5.39	-5.96	-4.57	-0.39	-0.65	-0.05
COMMUNITY CHRISTIAN ACADEMY	STUART	33	96	-5.80	-5.39	-6.21	-3.12	-2.45	-3.79
COMMUNITY CHRISTIAN LEARNING CENTER	APOPKA	50	128	-5.28	-6.38	-3.98	-4.14	-3.74	-3.74
COMMUNITY CHRISTIAN SCHOOL	BRADENTON	43	243	1.93	2.09	1.34	-1.44	0.13	-2.98
COMMUNITY CHRISTIAN SCHOOL	PORT CHARLOTTE	100	107	-1.54	-0.30	-2.77	-0.25	1.96	-2.59
COMMUNITY CHRISTIAN SCHOOL INC.	MELBOURNE	37	40	-0.50	-0.59	-0.41	-0.5	-0.78	-0.23
CORAL SPRINGS CHRISTIAN ACADEMY	CORAL SPRINGS	47	111	2.26	2.77	1.74	-0.9	-0.07	-1.72
CORNERSTONE CHRISTIAN SCHOOL	JACKSONVILLE	32	41	-9.53	-7.19	-11.88	-8.65	-6.02	-11.27
COVENANT CHRISTIAN SCHOOL	PALM BAY	47	141	-1.46	-1.00	-1.91	-3.91	-2.92	-4.89

Appendix continued

SCHOOL NAME	CITY	NUMBER OF GAIN SCORES OBSERVED		AVERAGE GAIN SCORE IN 2016-17			AVERAGE GAIN SCORE FROM 2014-15 TO 2016-17		
		2016-17 SCHOOL YEAR	BETWEEN 2014-15 AND 2016-17	READING+ MATH COMBINED	READING	MATH	READING+ MATH COMBINED	READING	MATH
CUTLER RIDGE CHRISTIAN ACADEMY	MIAMI	51	121	-2.94	-2.86	-3.02	-0.9	-0.74	-1.07
DELTONA CHRISTIAN SCHOOL	DELTONA	58	110	1.91	4.48	-0.67	-1.3	0.65	-3.25
DIVINE SAVIOR LUTHERAN ACADEMY	DORAL	33	54	-2.36	-1.45	-3.27	-1.92	-0.67	-3.17
DOWNEY CHRISTIAN SCHOOL	ORLANDO	80	174	-1.79	-2.62	-1.20	-0.18	-0.51	0.02
DR. JOHN A. MCKINNEY CHRISTIAN ACADEMY	MIAMI	36	110	0.04	2.72	-2.64	-1.31	0.05	-2.71
DUNNELLON CHRISTIAN ACADEMY	DUNNELLON	30	75	-7.03	-6.43	-7.63	-3.05	-3.36	-2.73
EAGLE'S VIEW ACADEMY	JACKSONVILLE	48	105	-6.11	-6.23	-6.00	-3.05	-3.05	-3.05
EASTLAND CHRISTIAN SCHOOL	ORLANDO	104	259	-6.27	-5.85	-6.70	-4.33	-3.65	-4.99
EBENEZER CHRISTIAN ACADEMY	MIAMI	30	85	2.67	7.60	-1.84	3.05	2.81	3.52
EDISON PRIVATE SCHOOL	HIALEAH	175	419	1.07	2.65	-0.50	0.7	0.88	0.53

Appendix continued

SCHOOL NAME	CITY	NUMBER OF GAIN SCORES OBSERVED		AVERAGE GAIN SCORE IN 2016-17			AVERAGE GAIN SCORE FROM 2014-15 TO 2016-17		
		2016-17 SCHOOL YEAR	BETWEEN 2014-15 AND 2016-17	READING+ MATH COMBINED	READING	MATH	READING+ MATH COMBINED	READING	MATH
ELFERS CHRISTIAN SCHOOL	NEW PORT RICHEY	68	183	-1.26	-2.40	-0.13	0.52	0.32	0.82
EVANGELICAL CHRISTIAN	FORT MYERS	33	89	-6.92	-5.22	-8.14	-1.56	-0.64	-2.57
EXCEL CHRISTIAN ACADEMY	LAKELAND	36	51	-1.04	-0.47	-1.61	-1.07	-1.69	-0.45
FAITH CHRISTIAN ACADEMY	ORLANDO	133	359	-6.66	-3.40	-9.92	-2.25	-0.9	-3.6
FAITH LUTHERAN SCHOOL	HIALEAH	31	96	4.73	7.39	2.06	2.34	1.95	2.74
FAITH OUTREACH ACADEMY	TAMPA	56	147	2.34	3.57	1.11	2.63	3.58	1.67
FAMILY CHRISTIAN SCHOOL OF CLERMONT	CLERMONT	57	127	-5.57	-3.36	-8.04	-3.39	-2.77	-4.13
FATHER LOPEZ HIGH SCHOOL	DAYTONA BEACH	61	139	2.24	4.56	-0.08	-1.01	-0.24	-1.78
FIRST ACADEMY-LEESBURG	LEESBURG	57	147	-0.39	1.82	-2.60	0.11	0.1	-0.02
FIRST ASSEMBLY CHRISTIAN SCHOOL DAYCARE	OCALA	92	206	1.40	1.72	0.97	0.07	1.22	-1.22

Appendix continued

SCHOOL NAME	CITY	NUMBER OF GAIN SCORES OBSERVED		AVERAGE GAIN SCORE IN 2016-17			AVERAGE GAIN SCORE FROM 2014-15 TO 2016-17		
		2016-17 SCHOOL YEAR	BETWEEN 2014-15 AND 2016-17	READING+ MATH COMBINED	READING	MATH	READING+ MATH COMBINED	READING	MATH
FIRST BAPTIST ACADEMY OF JACKSONVILLE	JACKSONVILLE	36	51	2.06	4.00	0.11	1.41	3.33	-0.51
FIRST BAPTIST CHRISTIAN ACADEMY	BUNNELL	60	115	1.80	1.83	1.77	1.1	1.77	0.43
FIRST BAPTIST RUSKIN CHRISTIAN SCHOOL	RUSKIN	32	75	-7.91	-9.00	-6.69	-3.91	-3.61	-4.23
FIRST COAST CHRISTIAN SCHOOL	JACKSONVILLE	130	342	-3.88	-4.30	-3.47	-2.12	-1.96	-2.29
FIRST UNITED METHODIST SCHOOL CENTER	BROOKSVILLE	30	48	2.88	2.20	3.77	1.55	1.02	2.18
FLORIDA CHRISTIAN SCHOOL	MIAMI	47	75	-4.95	-5.17	-4.72	-2.69	-3.61	-1.77
FLORIDA COLLEGE ACADEMY	TAMPA	36	75	1.29	5.72	-3.14	1.29	4.08	-1.49
FOREST CITY S.D.A.	ORLANDO	53	149	-0.51	-0.26	-0.75	2.13	2.2	2.12
FOREST LAKE ACADEMY	APOPKA	69	170	0.04	1.58	-1.49	-0.86	0.86	-2.59
FOREST LAKE EDUCATION CENTER	LONGWOOD	99	265	0.29	1.94	-1.32	0.52	1.06	0.06

Appendix continued

SCHOOL NAME	CITY	NUMBER OF GAIN SCORES OBSERVED		AVERAGE GAIN SCORE IN 2016-17			AVERAGE GAIN SCORE FROM 2014-15 TO 2016-17		
		2016-17 SCHOOL YEAR	BETWEEN 2014-15 AND 2016-17	READING+ MATH COMBINED	READING	MATH	READING+ MATH COMBINED	READING	MATH
FORT LAUDERDALE PREPARATORY SCHOOL	FORT LAUDERDALE	31	76	2.05	1.23	2.87	1.97	1.97	1.96
FOUNDATION ACADEMY	JACKSONVILLE	39	107	-4.15	-4.72	-3.59	-2.24	-2.32	-2
FOUNDATION CHRISTIAN ACADEMY	VALRICO	41	96	3.91	3.05	4.78	1.67	2.55	0.78
GARDEN OF THE SAHABA ACADEMY	BOCA RATON	65	159	-0.72	-1.86	0.42	-0.64	0.63	-1.92
GLADES DAY SCHOOL	BELLE GLADE	30	76	-1.77	-0.47	-3.07	-1.26	0.63	-3.14
GLENDALE CHRISTIAN SCHOOL	VERO BEACH	42	94	-4.35	-3.40	-5.29	-2.07	-0.97	-3.18
GOOD SHEPHERD CATHOLIC SCHOOL	ORLANDO	62	152	-1.74	-1.65	-1.98	-1.24	-1.64	-0.9
GOOD SHEPHERD SCHOOL	MIAMI	58	135	-1.13	-0.26	-2.00	-0.98	-0.1	-1.82
GRACE ACADEMY INTERNATIONAL CENTRAL	OPA LOCKA	34	88	-6.72	-6.09	-7.35	-1.97	-1.13	-2.82
GRACE AND GLORY CHRISTIAN SCHOOL	CHIPLEY	31	69	0.31	-0.26	0.87	-0.49	-0.49	-0.43

Appendix continued

SCHOOL NAME	CITY	NUMBER OF GAIN SCORES OBSERVED		AVERAGE GAIN SCORE IN 2016-17			AVERAGE GAIN SCORE FROM 2014-15 TO 2016-17		
		2016-17 SCHOOL YEAR	BETWEEN 2014-15 AND 2016-17	READING+ MATH COMBINED	READING	MATH	READING+ MATH COMBINED	READING	MATH
GRACE CHRISTIAN SCHOOLS OF PASCO	HUDSON	39	97	-1.55	-0.92	-2.18	-0.76	-0.46	-1.06
GREATER MIAMI ACADEMY	MIAMI	117	308	3.19	4.02	2.40	2.8	3.94	1.68
HAMPDEN DUBOSE ACADEMY	ZELLWOOD	41	115	-4.49	-3.46	-5.51	-1.67	-1.97	-1.37
HEBREW ACADEMY COMMUNITY SCHOOL	MARGATE	96	214	1.20	1.65	1.37	1.27	0.83	2.02
HERITAGE CHRISTIAN SCHOOL	KISSIMMEE	199	401	-0.13	-0.78	0.60	0.68	0.5	0.87
HERITAGE PREPARATORY SCHOOL	ORLANDO	106	245	-1.40	0.25	-3.06	-1.87	-1.4	-2.34
HERNANDO CHRISTIAN ACADEMY	BROOKSVILLE	72	147	-0.73	-1.25	-0.21	-1.39	-1.35	-1.44
HIGHLANDS CHRISTIAN ACADEMY	POMPANO BEACH	117	276	-2.14	-1.67	-2.62	-1.1	-0.8	-1.39
HIGHPOINT ACADEMY INC.	MIAMI	35	76	0.89	0.86	0.91	0.29	0.13	0.45
HILLEL DAY SCHOOL OF BOCA RATON	BOCA RATON	30	49	1.85	-1.07	4.77	0.27	0.57	-0.04

Appendix continued

SCHOOL NAME	CITY	NUMBER OF GAIN SCORES OBSERVED		AVERAGE GAIN SCORE IN 2016-17			AVERAGE GAIN SCORE FROM 2014-15 TO 2016-17		
		2016-17 SCHOOL YEAR	BETWEEN 2014-15 AND 2016-17	READING+ MATH COMBINED	READING	MATH	READING+ MATH COMBINED	READING	MATH
HOBE SOUND CHRISTIAN ACADEMY	HOBE SOUND	42	106	-6.18	-5.55	-6.71	-1.5	-1.88	-1.19
HOLLYWOOD CHRISTIAN SCHOOL	HOLLYWOOD	58	121	1.21	1.93	0.43	-2.4	-1.82	-2.86
HOLY CROSS LUTHERAN SCHOOL	NORTH MIAMI	107	203	4.64	4.01	5.27	2.83	3.08	2.57
HOLY FAMILY CATHOLIC SCHOOL	NORTH MIAMI	93	108	2.33	2.91	1.74	-1.47	-3.08	0.15
HOLY FAMILY CATHOLIC SCHOOL	ORLANDO	41	263	-0.51	-0.37	-0.66	-0.36	0.32	-1.03
HOLY REDEEMER CATHOLIC SCHOOL	KISSIMMEE	91	245	2.19	2.56	1.82	1.1	0.96	1.29
HOLY ROSARY CATHOLIC SCHOOL	JACKSONVILLE	46	148	3.79	3.48	4.11	0.17	-0.33	0.67
HOPE ACADEMY	HOMESTEAD	127	230	0.72	1.80	-0.36	-0.52	-0.85	-0.19
HOPE CHRISTIAN ACADEMY	STARKE	46	80	-4.62	-2.96	-6.28	-3.32	-0.91	-5.73
HOREB CHRISTIAN SCHOOL	HIALEAH	63	162	-8.29	-5.70	-10.89	-2.24	-0.9	-3.59

Appendix continued

SCHOOL NAME	CITY	NUMBER OF GAIN SCORES OBSERVED		AVERAGE GAIN SCORE IN 2016-17			AVERAGE GAIN SCORE FROM 2014-15 TO 2016-17		
		2016-17 SCHOOL YEAR	BETWEEN 2014-15 AND 2016-17	READING+ MATH COMBINED	READING	MATH	READING+ MATH COMBINED	READING	MATH
I.E.C. CHRISTIAN ACADEMY	ORLANDO	60	145	0.28	0.28	0.27	0.48	1.59	-0.63
IBCK EDUCATIONAL CENTER	KISSIMMEE	131	229	-1.20	-0.70	-1.71	-1.69	-0.56	-2.82
IBN SEENA ACADEMY	ORLANDO	49	132	-0.74	-1.00	-0.49	1.14	1.41	0.87
IMMACULATE CONCEPTION CATHOLIC SCHOOL	HIALEAH	62	180	-0.93	-0.45	-1.40	0.35	-0.97	1.67
INCARNATION CATHOLIC SCHOOL	TAMPA	59	137	1.96	2.12	1.80	0.55	0.62	0.47
INDIAN ROCKS CHRISTIAN SCHOOL	LARGO	93	210	-5.32	-5.56	-5.08	-2.01	-1.72	-2.3
INVERNESS CHRISTIAN ACADEMY	INVERNESS	37	109	-4.84	-4.57	-5.08	-1.48	-1.59	-1.39
IVA CHRISTIAN SCHOOL	CLEARWATER	58	159	4.30	2.09	6.52	0.63	-0.2	1.21
JEREMIAH ACADEMY	MIAMI	31	79	-7.34	-4.48	-10.19	-2.07	-0.84	-3.3
JOSE MARTI SCHOOL 3RD CAMPUS	MIAMI	56	168	-3.97	-5.54	-2.41	-4.42	-4.02	-4.82

Appendix continued

SCHOOL NAME	CITY	NUMBER OF GAIN SCORES OBSERVED		AVERAGE GAIN SCORE IN 2016-17			AVERAGE GAIN SCORE FROM 2014-15 TO 2016-17		
		2016-17 SCHOOL YEAR	BETWEEN 2014-15 AND 2016-17	READING+ MATH COMBINED	READING	MATH	READING+ MATH COMBINED	READING	MATH
JOSHUA CHRISTIAN ACADEMY	JACKSONVILLE	42	90	2.86	3.86	1.43	1.99	3.14	0.66
JUBILEE CHRISTIAN ACADEMY	PENSACOLA	46	121	0.75	0.00	1.50	0.48	0.07	0.61
KESWICK CHRISTIAN SCHOOL	SAINT PETERSBURG	57	123	0.30	1.79	-1.19	-0.39	0.91	-1.68
KIDS LEARNING CENTER OF SOUTH DADE III	MIAMI	53	118	0.04	5.53	-5.45	-1.68	-0.47	-2.78
KINGDOM ACADEMY	MIAMI	50	96	-0.54	2.02	-3.10	-0.61	1.89	-3.11
KINGSWAY CHRISTIAN ACADEMY	ORLANDO	140	387	0.35	-0.51	1.21	-0.05	-0.52	0.42
KLURMAN/LUBAVITCH	MIAMI BEACH	37	87	-0.51	1.81	-2.84	-2.4	-0.82	-3.98
LA PROGRESIVA PRESBYTERIAN SCHOOL INC.	MIAMI	259	407	-0.14	-0.34	0.05	1.35	1.69	1.01
LAKE CITY CHRISTIAN ACADEMY	LAKE CITY	35	85	-5.53	-4.86	-6.20	0.59	0.31	0.87
LAKE WORTH CHRISTIAN SCHOOL SOCIETY INC.	BOYNTON BEACH	47	99	-0.43	-0.02	-1.02	-1.12	-0.84	-1.48

Appendix continued

SCHOOL NAME	CITY	NUMBER OF GAIN SCORES OBSERVED		AVERAGE GAIN SCORE IN 2016-17			AVERAGE GAIN SCORE FROM 2014-15 TO 2016-17		
		2016-17 SCHOOL YEAR	BETWEEN 2014-15 AND 2016-17	READING+ MATH COMBINED	READING	MATH	READING+ MATH COMBINED	READING	MATH
LAKELAND CHRISTIAN SCHOOL	LAKELAND	32	76	1.17	1.22	1.13	-0.18	0.08	-0.45
LAKESIDE CHRISTIAN SCHOOL	CLEARWATER	68	186	-3.19	-3.28	-3.10	-0.46	-0.61	0.04
LANDMARK CHRISTIAN SCHOOL	HAINES CITY	48	104	-7.16	-8.42	-5.90	-3.17	-3.41	-2.93
LEADERS PREPARATORY SCHOOL	ORLANDO	57	139	0.04	0.28	-0.21	-0.91	-0.67	-1.16
LIBERTY CHRISTIAN PREPARATORY SCHOOL	TAVARES	47	130	-4.56	-4.96	-4.17	-1.98	-1.65	-2.3
LIBERTY CHRISTIAN SCHOOL	SANFORD	33	98	-1.33	1.00	-3.77	-0.34	0.61	-1.37
LIFE ASSEMBLY OF GOD LIFE ACADEMY	KISSIMMEE	77	198	-1.45	-0.27	-2.58	0.91	1.54	0.35
LIGHTHOUSE CHRISTIAN PREPARATORY ACADEMY	DELAND	60	148	-8.72	-7.45	-10.02	-3.15	-2.53	-3.79
LIGHTHOUSE PRIVATE CHRISTIAN ACADEMY PREP	PENSACOLA	54	54	-2.69	-5.19	-0.19	-2.69	-5.19	-0.19
LINCOLN-MARTI COMMUNITY AGENCY 10	MIAMI	118	347	-0.08	1.70	-1.39	0.43	1.39	-0.36

Appendix continued

SCHOOL NAME	CITY	NUMBER OF GAIN SCORES OBSERVED		AVERAGE GAIN SCORE IN 2016-17			AVERAGE GAIN SCORE FROM 2014-15 TO 2016-17		
		2016-17 SCHOOL YEAR	BETWEEN 2014-15 AND 2016-17	READING+ MATH COMBINED	READING	MATH	READING+ MATH COMBINED	READING	MATH
LINCOLN-MARTI COMMUNITY AGENCY 17	HIALEAH	73	230	12.68	12.42	12.93	8.7	7.78	9.61
LINCOLN-MARTI COMMUNITY AGENCY 23	MIAMI	82	228	24.73	23.06	26.23	8.33	9.44	7.2
LINCOLN-MARTI COMMUNITY AGENCY 28	MIAMI	94	287	-3.25	-3.46	-3.04	-4.17	-4.43	-3.84
LINCOLN-MARTI COMMUNITY AGENCY 76	HIALEAH	45	124	2.68	7.64	-2.67	0.02	0.75	-1.71
LITTLE FLOWER CATHOLIC	PENSACOLA	32	72	-1.03	-1.09	-0.97	-1.96	-1.67	-2.26
LITTLE FLOWER SCHOOL	HOLLYWOOD	44	122	1.23	0.95	1.50	0.23	0.42	0.05
LIVING WORD ACADEMY	ORLANDO	39	89	1.12	0.26	2.00	0.87	0.26	1.49
LUBAVITCH EDUCATIONAL CENTER INC.	MIAMI	266	461	-1.49	0.02	-3.01	-3.26	-1.86	-4.73
MASTERS PREPARATORY SCHOOL	HIALEAH	142	315	-4.16	2.35	-10.61	-3.31	0	-6.64
MEADOWBROOK ACADEMY INC.	OCALA	63	164	2.27	3.00	1.40	0.2	1.03	-0.65

Appendix continued

SCHOOL NAME	CITY	NUMBER OF GAIN SCORES OBSERVED		AVERAGE GAIN SCORE IN 2016-17			AVERAGE GAIN SCORE FROM 2014-15 TO 2016-17		
		2016-17 SCHOOL YEAR	BETWEEN 2014-15 AND 2016-17	READING+ MATH COMBINED	READING	MATH	READING+ MATH COMBINED	READING	MATH
MELBOURNE CENTRAL CATHOLIC HIGH SCHOOL	MELBOURNE	44	99	-1.36	-0.86	-1.86	-3.99	-3.51	-4.48
MERRITT ISLAND CHRISTIAN SCHOOL	MERRITT ISLAND	35	94	1.19	1.69	0.69	-0.2	-0.99	0.43
MIAMI CHRISTIAN	MIAMI	52	93	2.84	3.92	1.94	2.17	3.34	0.96
MIAMI UNION ACADEMY	NORTH MIAMI	82	242	0.16	0.41	-0.31	-0.76	-0.91	-0.69
MONSIGNOR EDWARD PACE HIGH SCHOOL	MIAMI GARDENS	161	369	-0.77	-1.77	0.09	-1.08	-0.8	-1.38
MORNINGSIDE ACADEMY	PORT ST. LUCIE	72	167	-6.61	-6.32	-7.52	-3.82	-3.52	-4.49
MOTHER OF CHRIST CATHOLIC SCHOOL	MIAMI	59	154	2.11	1.37	2.85	0.91	-0.01	1.73
MOTHER OF OUR REDEEMER CATHOLIC SCHOOL	MIAMI	30	78	-0.58	-2.10	0.93	-1.45	-1.45	-1.45
MOUNT BETHEL CHRISTIAN ACADEMY	FT. LAUDERDALE	43	81	1.48	1.60	1.35	1	0.62	1.38
MOUNT DORA CHRISTIAN ACADEMY	MOUNT DORA	38	60	0.79	1.79	-0.21	1.67	2.42	0.92

Appendix continued

SCHOOL NAME	CITY	NUMBER OF GAIN SCORES OBSERVED		AVERAGE GAIN SCORE IN 2016-17			AVERAGE GAIN SCORE FROM 2014-15 TO 2016-17		
		2016-17 SCHOOL YEAR	BETWEEN 2014-15 AND 2016-17	READING+ MATH COMBINED	READING	MATH	READING+ MATH COMBINED	READING	MATH
MT. SINAI SEVENTH-DAY ADVENTIST	ORLANDO	48	104	-1.13	0.69	-2.94	-0.78	0.79	-2.32
MUSLIM ACADEMY OF GREATER ORLANDO	ORLANDO	56	170	-2.90	-4.55	-1.25	1.09	1.48	0.69
NATIVITY CATHOLIC SCHOOL	BRANDON	49	108	1.02	2.33	-0.29	-0.2	0.46	-0.84
NATIVITY SCHOOL	HOLLYWOOD	48	101	2.02	1.90	2.15	1.29	0.73	1.84
NEW GENERATION CHRISTIAN MINISTRIES	LAKE CITY	40	88	0.79	1.15	0.75	1.3	2.57	0.15
NORTH FLORIDA CHRISTIAN SCHOOL	TALLAHASSEE	60	159	-8.12	-5.82	-10.42	-3.46	-3.26	-3.65
NORTH FLORIDA EDUCATIONAL INSTITUTE	JACKSONVILLE	32	110	0.80	-1.13	3.12	-0.34	-1.22	0.77
NORTH KISSIMMEE CHRISTIAN SCHOOL	KISSIMMEE	54	142	1.91	0.26	3.56	0.23	0.44	0.01
NORTHSIDE CHRISTIAN ACADEMY	STARKE	52	138	-1.36	-0.88	-1.83	-3.13	-2.18	-4.07
NORTHWEST CHRISTIAN ACADEMY	MIAMI	84	215	-1.44	-1.98	-0.90	-1.96	-0.92	-3.04

Appendix continued

SCHOOL NAME	CITY	NUMBER OF GAIN SCORES OBSERVED		AVERAGE GAIN SCORE IN 2016-17			AVERAGE GAIN SCORE FROM 2014-15 TO 2016-17		
		2016-17 SCHOOL YEAR	BETWEEN 2014-15 AND 2016-17	READING+ MATH COMBINED	READING	MATH	READING+ MATH COMBINED	READING	MATH
NOTRE DAME CATHOLIC SCHOOL	SPRING HILL	44	106	4.98	7.77	2.18	1.44	2.1	0.77
NUR UL-ISLAM ACADEMY	COOPER CITY	126	337	1.82	2.90	0.73	2.23	2.65	1.81
OASIS CHRISTIAN ACADEMY	WINTER HAVEN	71	162	1.44	3.46	-0.59	0.41	0.96	-0.14
OCALA CHRISTIAN ACADEMY	OCALA	111	222	-0.78	-1.44	-0.13	-0.28	-0.75	0.19
OKEECHOBEE CHRISTIAN ACADEMY	OKEECHOBEE	48	125	1.68	2.73	0.78	-1.04	-0.34	-1.61
OLD PLANK CHRISTIAN ACADEMY	JACKSONVILLE	43	94	3.21	1.63	4.79	-0.72	-1.7	0.27
ONE SCHOOL OF THE ARTS	LONGWOOD	56	112	-1.00	-0.04	-1.84	0.44	1.6	-0.67
ORLANDO CHRISTIAN PREP	ORLANDO	73	198	-7.35	-9.41	-5.27	-2.46	-2.71	-2.22
ORLANDO JUNIOR ACADEMY	ORLANDO	54	145	0.79	0.22	1.48	1.02	0.35	1.66
OUR LADY OF CHARITY SCHOOL INC.	HIALEAH	42	153	3.24	3.83	2.09	1.29	1.25	1.14

Appendix continued

SCHOOL NAME	CITY	NUMBER OF GAIN SCORES OBSERVED		AVERAGE GAIN SCORE IN 2016-17			AVERAGE GAIN SCORE FROM 2014-15 TO 2016-17		
		2016-17 SCHOOL YEAR	BETWEEN 2014-15 AND 2016-17	READING+ MATH COMBINED	READING	MATH	READING+ MATH COMBINED	READING	MATH
OUR LADY OF LOURDES CATHOLIC SCHOOL	DAYTONA BEACH FL	71	178	2.02	2.10	1.94	0.31	-0.03	0.65
OUR LADY OF LOURDES PARISH SCHOOL	MIAMI	41	100	0.77	0.20	1.34	-0.69	-1.08	-0.29
OUR LADY OF THE HOLY ROSARY-ST RICHARD CATHOLIC	MIAMI	46	134	0.86	2.91	-1.20	0.17	-1.18	1.51
OUR LADY OF THE LAKES CATHOLIC SCHOOL	MIAMI LAKES	61	138	0.31	0.33	0.30	-0.13	-0.16	-0.1
OUR LADY QUEEN OF MARTYRS	FORT LAUDERDALE	79	182	-0.60	1.29	-2.49	-1.34	-0.8	-1.88
PARK AVENUE CHRISTIAN ACADEMY	TITUSVILLE	70	167	2.05	3.43	0.67	0.48	0.59	0.37
PARSONS CHRISTIAN ACADEMY	JACKSONVILLE	41	41	-9.11	-8.12	-10.10	-9.11	-8.12	-10.1
PATHWAYS SCHOOL	ORLANDO	38	105	4.03	5.79	2.26	2.19	2.98	1.4
PENIEL BAPTIST ACADEMY	PALATKA	58	145	-8.54	-8.38	-8.71	-4.61	-3.93	-5.29
PENSACOLA CATHOLIC HIGH SCHOOL	PENSACOLA	46	103	-0.37	-1.37	0.63	-0.92	-0.31	-1.53

Appendix continued

SCHOOL NAME	CITY	NUMBER OF GAIN SCORES OBSERVED		AVERAGE GAIN SCORE IN 2016-17			AVERAGE GAIN SCORE FROM 2014-15 TO 2016-17		
		2016-17 SCHOOL YEAR	BETWEEN 2014-15 AND 2016-17	READING+ MATH COMBINED	READING	MATH	READING+ MATH COMBINED	READING	MATH
PENTAB ACADEMY	MIAMI	41	126	-13.48	-16.27	-10.38	-4.17	-5.5	-2.75
PHYL'S ACADEMY PREPARATORY SCHOOL	MARGATE	43	43	0.70	0.74	0.65	0.7	0.74	0.65
PINE CASTLE CHRISTIAN ACADEMY	ORLANDO	37	59	1.30	1.97	0.97	-2.22	-1.83	-2.33
PLEASANT HILL ACADEMY	KISSIMMEE	50	97	1.56	2.29	1.06	0.45	3.86	-2.8
POINCIANA CHRISTIAN PREPARATORY SCHOOL	KISSIMMEE	45	87	-4.91	-6.00	-3.63	-2.6	-2.28	-2.84
POTTER'S HOUSE ACADEMY	ORLANDO	78	185	2.18	7.27	-2.91	0.75	3.42	-1.92
RABBI ALEXANDER S. GROSS HEBREW ACADEMY	MIAMI BEACH	44	117	-8.25	-4.05	-12.93	-3.96	-1.63	-6.63
RADIANT LIFE ACADEMY	ORLANDO	64	144	-1.90	-2.03	-1.77	-0.08	-0.39	0.46
REAL LIFE CHRISTIAN ACADEMY	CLERMONT	62	153	-0.97	-0.61	-1.32	0.99	0.56	1.42
REBORN CHRISTIAN ACADEMY	KISSIMMEE	40	65	-1.71	0.83	-4.66	-1.38	0.83	-3.85

Appendix continued

SCHOOL NAME	CITY	NUMBER OF GAIN SCORES OBSERVED		AVERAGE GAIN SCORE IN 2016-17			AVERAGE GAIN SCORE FROM 2014-15 TO 2016-17		
		2016-17 SCHOOL YEAR	BETWEEN 2014-15 AND 2016-17	READING+ MATH COMBINED	READING	MATH	READING+ MATH COMBINED	READING	MATH
REDEEMER CHRISTIAN SCHOOL	OCALA	34	83	-2.66	-4.65	-0.97	-1	-2.14	-0.33
REGENCY CHRISTIAN ACADEMY	ORLANDO	45	128	-6.84	-5.56	-8.13	-2.03	-0.66	-3.4
RESURRECTION PARISH SCHOOL	JACKSONVILLE	40	102	4.41	3.00	5.83	2.01	0.09	3.94
RHEMA WORD CHRISTIAN ACADEMY	POMPANO BEACH	30	52	3.63	0.76	5.31	0.75	1.39	-0.82
RHODORA J. DONAHUE ACADEMY	AVE MARIA	35	107	0.13	2.11	-1.86	-0.98	-0.71	-1.24
RIDGE CHRISTIAN ACADEMY	DAVENPORT	35	78	-8.50	-5.31	-11.69	-4.19	-1.68	-6.71
RJ HENDLEY CHRISTIAN COMMUNITY SCHOOL	RIVIERA BEACH	31	122	-1.94	-2.16	-1.97	-1.45	-1.7	-1.36
ROCKY BAYOU CHRISTIAN SCHOOL NFCEA	NICEVILLE	42	108	0.61	-0.76	1.98	1.48	0.03	2.94
S.L. JONES CHRISTIAN ACADEMY	PENSACOLA	33	115	-1.36	3.94	-6.39	-2.9	-1.65	-4.03
SACRED HEART	JACKSONVILLE	66	162	1.89	2.36	1.42	-0.1	-0.96	0.77

Appendix continued

SCHOOL NAME	CITY	NUMBER OF GAIN SCORES OBSERVED		AVERAGE GAIN SCORE IN 2016-17			AVERAGE GAIN SCORE FROM 2014-15 TO 2016-17		
		2016-17 SCHOOL YEAR	BETWEEN 2014-15 AND 2016-17	READING+ MATH COMBINED	READING	MATH	READING+ MATH COMBINED	READING	MATH
SACRED HEART CATHOLIC SCHOOL	PINELLAS PARK	67	155	0.66	0.55	0.76	-0.97	-1.32	-0.62
SACRED HEART SCHOOL	LAKE WORTH	65	153	-2.60	-0.77	-4.43	-1.97	-1.05	-2.82
SAINT AGATHA SCHOOL	MIAMI	77	172	1.12	2.25	0.00	-1.54	-1.59	-1.48
SAINT AMBROSE	DEERFIELD BEACH	34	85	2.88	3.88	1.88	-1.17	-1.04	-1.31
SAINT ANASTASIA CATHOLIC SCHOOL	FORT PIERCE	48	121	-1.72	-2.10	-1.33	-0.88	-0.52	-1.23
SAINT ANDREW CATHOLIC	CAPE CORAL	31	75	-0.68	-2.06	0.71	0.03	-1.69	1.76
SAINT ANDREW CATHOLIC SCHOOL	CORAL SPRINGS	50	321	1.90	3.62	0.18	-0.29	-0.14	-0.44
SAINT ANDREW CATHOLIC SCHOOL	ORLANDO	128	112	-2.96	0.02	-5.94	0.88	0.46	1.29
SAINT BARNABAS EPISCOPAL SCHOOL	DELAND	32	107	0.25	-1.38	1.88	-0.81	-1.9	0.27
SAINT BARTHOLOMEW SCHOOL	MIRAMAR	54	143	1.73	-0.13	3.85	-0.8	-0.75	-0.72

Appendix continued

SCHOOL NAME	CITY	NUMBER OF GAIN SCORES OBSERVED		AVERAGE GAIN SCORE IN 2016-17			AVERAGE GAIN SCORE FROM 2014-15 TO 2016-17		
		2016-17 SCHOOL YEAR	BETWEEN 2014-15 AND 2016-17	READING+ MATH COMBINED	READING	MATH	READING+ MATH COMBINED	READING	MATH
SAINT BRENDAN ELEMENTARY SCHOOL	MIAMI	76	171	0.24	2.53	-2.04	-0.59	0.05	-1.27
SAINT BRENDAN HIGH SCHOOL	MIAMI	70	130	0.90	4.44	-2.64	0.38	2.62	-1.86
SAINT FRANCIS XAVIER	FORT MYERS	31	54	5.35	5.42	5.29	2.19	3.13	1.24
SAINT HELEN CATHOLIC SCHOOL	FORT LAUDERDALE	84	208	2.56	2.69	2.43	1.29	1.25	1.33
SAINT JAMES CATHOLIC SCHOOL	MIAMI	169	452	-0.18	0.41	-0.76	-0.38	0.02	-0.77
SAINT JOHN PAUL II CATHOLIC SCHOOL	LECANTO	30	50	1.23	1.61	0.67	1.78	2.85	0.5
SAINT JOHN THE APOSTLE SCHOOL	HIALEAH	95	270	1.29	0.85	1.74	1.61	0.96	2.26
SAINT JOHN THE EVANGELIST	PENSACOLA	31	82	-1.47	0.03	-2.97	-1.24	-0.37	-2.12
SAINT JOHNS EPISCOPAL SCHOOL	HOMESTEAD	49	140	-2.91	-0.88	-4.94	-0.05	1.71	-1.81
SAINT JOSEPH CATHOLIC SCHOOL	PALM BAY	41	178	3.63	3.54	3.73	-0.44	-1.79	0.9

Appendix continued

SCHOOL NAME	CITY	NUMBER OF GAIN SCORES OBSERVED		AVERAGE GAIN SCORE IN 2016-17			AVERAGE GAIN SCORE FROM 2014-15 TO 2016-17		
		2016-17 SCHOOL YEAR	BETWEEN 2014-15 AND 2016-17	READING+ MATH COMBINED	READING	MATH	READING+ MATH COMBINED	READING	MATH
SAINT JOSEPH CATHOLIC SCHOOL	WINTER HAVEN	67	96	0.27	-2.33	2.87	1.45	0.8	2.09
SAINT JOSEPH PARISH SCHOOL	TAMPA	71	163	2.61	4.07	1.15	0.48	1.06	-0.1
SAINT JOSEPH SCHOOL	JACKSONVILLE	59	151	2.98	3.44	2.53	1.04	0.23	1.86
SAINT JOSEPH'S SCHOOL	LAKELAND	33	94	1.27	-1.33	3.88	1.26	0.2	2.32
SAINT JUDE CATHEDRAL SCHOOL	SAINT PETERSBURG	51	101	-0.25	-2.94	2.43	0.63	-0.84	2.11
SAINT KEVIN CATHOLIC SCHOOL	MIAMI	39	83	-0.71	0.56	-1.97	-0.6	-0.53	-0.66
SAINT LAWRENCE SCHOOL	NORTH MIAMI BEACH	55	166	0.74	0.15	1.33	0.14	-0.09	0.37
SAINT LUCIE CHRISTIAN SCHOOL	FT. PIERCE	50	87	-3.60	-5.22	-1.98	-3.02	-3.63	-2.41
SAINT LUKE CATHOLIC	PALM SPRINGS	40	103	-3.68	-2.05	-5.30	-3.52	-2.31	-4.74
SAINT MARY SCHOOL	FORT WALTON BEACH	33	92	0.33	1.82	-1.12	-1.24	-1.4	-1.08

Appendix continued

SCHOOL NAME	CITY	NUMBER OF GAIN SCORES OBSERVED		AVERAGE GAIN SCORE IN 2016-17			AVERAGE GAIN SCORE FROM 2014-15 TO 2016-17		
		2016-17 SCHOOL YEAR	BETWEEN 2014-15 AND 2016-17	READING+ MATH COMBINED	READING	MATH	READING+ MATH COMBINED	READING	MATH
SAINT MARYS CATHEDRAL	MIAMI	141	431	2.15	2.15	2.16	1.24	1.59	0.9
SAINT MATTHEWS CATHOLIC SCHOOL	JACKSONVILLE	37	86	-1.53	0.76	-3.81	-1.24	-1.12	-1.36
SAINT MICHAEL THE ARCHANGEL	MIAMI	112	275	1.46	2.21	0.71	0.32	1	-0.36
SAINT PATRICK INTERPARISH SCHOOL	GAINESVILLE	39	84	-1.99	-2.69	-1.28	-0.59	-2.48	1.42
SAINT PATRICK SCHOOL	LARGO	33	57	-2.38	-3.03	-1.73	0.49	0.76	0.39
SAINT PATRICKS	JACKSONVILLE	32	84	-2.42	-6.28	1.44	-3.52	-5.7	-1.35
SAINT PAUL CATHOLIC SCHOOL	DAYTONA BEACH	56	174	1.89	-0.41	4.20	-0.96	-1.17	-0.74
SAINT PAUL LUTHERAN SCHOOL	LAKELAND	31	50	-3.92	-2.71	-5.13	-2.83	-0.76	-4.9
SAINT PAUL'S CATHOLIC SCHOOL	LEESBURG	51	111	-2.54	-1.47	-3.61	-1.69	-2.55	-0.83
SAINT PETER CLAVER	TAMPA	56	145	0.84	1.75	0.20	0.25	1.99	-1.37

Appendix continued

SCHOOL NAME	CITY	NUMBER OF GAIN SCORES OBSERVED		AVERAGE GAIN SCORE IN 2016-17			AVERAGE GAIN SCORE FROM 2014-15 TO 2016-17		
		2016-17 SCHOOL YEAR	BETWEEN 2014-15 AND 2016-17	READING+ MATH COMBINED	READING	MATH	READING+ MATH COMBINED	READING	MATH
SAINT PETERSBURG CHRISTIAN SCHOOL	SAINT PETERSBURG	37	106	-4.20	-0.27	-8.14	-4.11	-1.39	-6.83
SAINT PIUS V CATHOLIC SCHOOL	JACKSONVILLE	46	129	-0.75	-1.35	-0.15	-0.87	-0.22	-1.52
SAINT THOMAS AQUINAS HIGH SCHOOL	FORT LAUDERDALE	42	103	0.92	2.21	-0.38	0.73	2.54	-1.09
SAINTS ACADEMY INC.	ORLANDO	73	173	-2.66	-2.37	-2.95	-2.18	-2.32	-2.03
SAINTS PETER PAUL SCHOOL	MIAMI	40	96	2.68	3.80	1.12	4.34	4.58	3.9
SALAH TAWFIK ELEMENTARY MIDDLE SCHOOL	SUNRISE	31	99	1.50	0.19	2.81	2.72	2.61	2.83
SAN JOSE CATHOLIC GRADE SCHOOL	JACKSONVILLE	32	73	2.19	2.34	2.03	0.92	0.3	1.53
SANTA FE CATHOLIC HIGH SCHOOL	LAKELAND	32	58	-3.09	0.79	-6.72	1.13	3.02	-0.66
SAWGRASS ADVENTIST SCHOOL	PLANTATION	33	75	-4.58	-4.76	-4.39	-2.5	-2.16	-2.64
SEFFNER CHRISTIAN ACADEMY	SEFFNER	58	142	-2.55	-1.86	-3.24	-2.35	-1.74	-2.96

Appendix continued

SCHOOL NAME	CITY	NUMBER OF GAIN SCORES OBSERVED		AVERAGE GAIN SCORE IN 2016-17			AVERAGE GAIN SCORE FROM 2014-15 TO 2016-17		
		2016-17 SCHOOL YEAR	BETWEEN 2014-15 AND 2016-17	READING+ MATH COMBINED	READING	MATH	READING+ MATH COMBINED	READING	MATH
SEVEN RIVERS CHRISTIAN SCHOOL	LECANTO	44	121	-0.88	3.27	-4.89	-2.12	-0.89	-3.4
SHA'AREI BINA TORAH ACADEMY FOR GIRLS	HOLLYWOOD	34	56	-2.34	-0.63	-3.56	-0.11	1.83	-1.75
SHEPHERD OF GOD CHRISTIAN ACADEMY CORP.	FLORIDA CITY	32	55	-1.59	1.34	-4.53	-0.15	1.65	-1.95
SHERIDAN HILLS CHRISTIAN SCHOOL	HOLLYWOOD	46	107	0.25	1.11	-0.61	2.23	2.21	2.26
SKYCREST CHRISTIAN SCHOOL	CLEARWATER	39	82	2.67	2.31	3.03	0.74	0.15	1.34
SNOW WHITE & THE SEVEN DWARFS SCHOOL	HIALEAH	38	137	0.57	2.53	-1.39	2.57	2.32	2.81
SONSHINE CHRISTIAN ACADEMY	FT MYERS	52	132	-6.34	-6.44	-6.23	-2.26	-2.59	-1.89
SOUTH ORLANDO CHRISTIAN ACADEMY	ORLANDO	82	220	-0.60	0.45	-1.65	0.96	1.56	0.55
SOUTHLAND CHRISTIAN SCHOOL	KISSIMMEE	89	275	0.25	0.45	-0.19	1.25	1.02	1.32
SOUTHWEST FLORIDA CHRISTIAN ACADEMY	FORT MYERS	30	80	-2.08	-0.37	-3.80	-2.21	-2.68	-1.74

Appendix continued

SCHOOL NAME	CITY	NUMBER OF GAIN SCORES OBSERVED		AVERAGE GAIN SCORE IN 2016-17			AVERAGE GAIN SCORE FROM 2014-15 TO 2016-17		
		2016-17 SCHOOL YEAR	BETWEEN 2014-15 AND 2016-17	READING+ MATH COMBINED	READING	MATH	READING+ MATH COMBINED	READING	MATH
SPRING HILL CHRISTIAN ACADEMY	SPRING HILL	58	139	-7.64	-6.69	-8.27	-3.57	-2.41	-4.62
ST. ANDREW'S EPISCOPAL ACADEMY	FORT PIERCE	37	55	0.53	0.59	0.46	1.22	1.31	1.13
ST. BERNADETTE CATHOLIC SCHOOL	HOLLYWOOD	42	101	2.90	4.14	1.14	-0.11	0.22	-0.74
ST. ELIZABETH ANN SETON CATHOLIC SCHOOL	PALM COAST	39	126	-0.72	-0.36	-1.08	-0.57	-1.33	0.19
ST. JAMES CHRISTIAN ACADEMY	FORT PIERCE	161	363	-6.83	-5.76	-7.80	-3.92	-3.12	-4.64
ST. MARY MAGDALEN CATHOLIC SCHOOL	ALTAMONTE SPRINGS	44	110	-0.42	-0.39	-0.45	-0.01	-0.71	0.68
ST. THOMAS AQUINAS SCHOOL	SAINT CLOUD	65	171	-0.14	-0.03	-0.25	-0.51	-0.89	-0.13
STETSON BAPTIST CHRISTIAN SCHOOL	DELAND	39	126	-10.91	-6.46	-15.36	-2.49	-0.13	-4.84
SUNFLOWERS ACADEMY	MIAMI	161	449	0.08	-1.51	1.68	-0.39	-0.85	0.05
TALLAVANA CHRISTIAN SCHOOL	HAVANA	55	153	-1.88	-0.44	-3.54	0.66	0.66	0.35

Appendix continued

SCHOOL NAME	CITY	NUMBER OF GAIN SCORES OBSERVED		AVERAGE GAIN SCORE IN 2016-17			AVERAGE GAIN SCORE FROM 2014-15 TO 2016-17		
		2016-17 SCHOOL YEAR	BETWEEN 2014-15 AND 2016-17	READING+ MATH COMBINED	READING	MATH	READING+ MATH COMBINED	READING	MATH
TAMPA ADVENTIST ACADEMY	TAMPA	35	111	-2.57	-2.61	-1.83	0.97	0.87	1.22
TAMPA BAY CHRISTIAN ACADEMY OF FLORIDA INC.	TAMPA	33	81	-3.00	-2.73	-3.27	-1.65	0.1	-3.4
TAMPA CATHOLIC HIGH SCHOOL INC.	TAMPA	37	94	-1.49	-0.51	-2.46	-1.7	0.05	-3.46
TEMPLE CHRISTIAN ACADEMY	JACKSONVILLE	33	102	-3.58	-1.21	-5.94	-1.02	0.03	-2.08
TEMPLE CHRISTIAN SCHOOL	TITUSVILLE	39	77	-3.05	-2.38	-4.64	-0.42	-0.41	-0.99
THE CLASSICAL ACADEMY OF SARASOTA	SARASOTA	32	46	-1.81	-1.97	-1.44	-1.4	-1.23	-1.43
THE CONRAD ACADEMY	ORLANDO	53	164	2.38	1.75	3.00	-2.66	-2.66	-2.65
THE POTTER'S HOUSE CHRISTIAN ACADEMY ELEMENTARY	JACKSONVILLE	94	216	-5.36	-3.37	-8.15	-2.34	-1.19	-3.82
THINKING CHILD CHRISTIAN ACADEMY SCHOOL	HOMESTEAD	36	110	5.65	7.03	4.28	3.71	4.67	2.75

Appendix continued

SCHOOL NAME	CITY	NUMBER OF GAIN SCORES OBSERVED		AVERAGE GAIN SCORE IN 2016-17			AVERAGE GAIN SCORE FROM 2014-15 TO 2016-17		
		2016-17 SCHOOL YEAR	BETWEEN 2014-15 AND 2016-17	READING+ MATH COMBINED	READING	MATH	READING+ MATH COMBINED	READING	MATH
TORAH ACADEMY OF BOCA RATON	BOCA RATON	32	53	1.66	1.69	1.63	1.9	2.28	1.51
TORAS EMES ACADEMY OF MIAMI	NORTH MIAMI BEACH	40	165	-1.10	-2.20	0.00	-1.49	-1.77	-1.21
TOWN CENTER PRESCHOOL	MIAMI	32	54	2.31	4.56	0.06	2.72	5.44	0.42
TREASURE OF KNOWLEDGE CHRISTIAN ACADEMY	ORLANDO	33	102	2.26	2.42	2.09	0.32	0.01	0.64
TRINITAS ACADEMY	PLANTATION	42	84	-1.93	-1.50	-2.36	-2.37	-1.7	-3.04
TRINITY CATHOLIC HIGH SCHOOL	OCALA	54	119	-1.59	-0.22	-2.96	-3.14	-1.42	-4.87
TRINITY CHRISTIAN ACADEMY	DELTONA	146	529	1.72	1.69	1.75	-2.56	-2.64	-2.46
TRINITY CHRISTIAN ACADEMY	LAKE WORTH	70	188	-1.95	-2.20	-1.70	-1.71	-1.73	-1.69
TRINITY CHRISTIAN ACADEMY	JACKSONVILLE	201	367	-5.84	-6.60	-5.01	0.77	1.19	0.34
TRINITY LUTHERAN SCHOOL	KISSIMMEE	38	94	2.86	2.68	3.03	-1.78	-1.56	-2

Appendix continued

SCHOOL NAME	CITY	NUMBER OF GAIN SCORES OBSERVED		AVERAGE GAIN SCORE IN 2016-17			AVERAGE GAIN SCORE FROM 2014-15 TO 2016-17		
		2016-17 SCHOOL YEAR	BETWEEN 2014-15 AND 2016-17	READING+ MATH COMBINED	READING	MATH	READING+ MATH COMBINED	READING	MATH
TURNING POINT CHRISTIAN ACADEMY	SAINT AUGUSTINE	33	77	-6.36	-4.97	-7.76	-3.98	-1.65	-6.31
UNITED BRETHREN IN CHRIST ACADEMY	HOLLY HILL	44	99	-5.20	-5.32	-5.09	-3.47	-3.72	-3.22
UNITED CEREBRAL PALSY-DIAMOND MINDS	MIAMI	46	90	-5.72	-6.06	-5.37	-2.51	-1.05	-3.8
UNIVERSAL ACADEMY OF FLORIDA	TAMPA	170	480	-0.09	-0.35	0.16	0.45	-0.2	1.09
UNIVERSITY CHRISTIAN SCHOOL	JACKSONVILLE	94	222	-2.31	-2.68	-1.95	-0.53	0.28	-1.34
VENICE CHRISTIAN SCHOOL	VENICE	39	108	2.67	4.36	0.97	0.01	0.57	-0.56
VICTORY CHRISTIAN ACADEMY	JACKSONVILLE	47	228	0.89	-0.43	2.21	-1.96	-1.02	-3.02
VICTORY CHRISTIAN ACADEMY	ORLANDO	75	124	-0.05	0.24	-0.43	-0.52	-0.87	-0.16
VICTORY CHRISTIAN ACADEMY	LAKELAND	97	204	-5.39	-1.92	-8.87	0.29	1.03	-0.44
VILLA MADONNA	TAMPA	36	102	-1.75	-1.81	-1.69	-1.1	-0.8	-1.39

Appendix continued

SCHOOL NAME	CITY	NUMBER OF GAIN SCORES OBSERVED		AVERAGE GAIN SCORE IN 2016-17			AVERAGE GAIN SCORE FROM 2014-15 TO 2016-17		
		2016-17 SCHOOL YEAR	BETWEEN 2014-15 AND 2016-17	READING+ MATH COMBINED	READING	MATH	READING+ MATH COMBINED	READING	MATH
VILLA PREPATORY ACADEMY CORP.	HOMESTEAD	43	145	-4.62	-2.18	-6.72	-1.24	-0.36	-2.04
VILLAGE VIEW CHRISTIAN ACADEMY	SUMMERFIELD	43	100	-7.48	-4.00	-11.00	-2.26	-0.67	-3.93
WALKER MEMORIAL ACADEMY	AVON PARK	34	86	-0.56	-2.58	1.85	-2.09	-2.07	-1.71
WARNER CHRISTIAN ACADEMY	SOUTH DAYTONA	135	363	0.17	1.73	-1.40	-1.36	-0.4	-2.34
WEST HERNANDO CHRISTIAN SCHOOL	SPRING HILL	60	166	1.18	1.69	0.32	-0.14	-0.24	0.07
WEST OAKS ACADEMY	ORLANDO	51	109	-0.98	0.37	-2.33	-1.55	-0.37	-2.72
WESTMINSTER ACADEMY	FORT LAUDERDALE	37	86	-1.53	0.54	-3.59	-1.87	-0.42	-3.31
WESTWOOD CHRISTIAN SCHOOL	LIVE OAK	46	129	-0.48	1.89	-2.85	-3	-1.43	-4.56
WESTWOOD CHRISTIAN SCHOOL	MIAMI	76	151	-2.89	-2.91	-3.05	-1.38	-1.83	-0.48
WILLIAM A. KIRLEW JR. ACADEMY	MIAMI GARDENS	72	169	-2.72	-0.13	-5.31	0	0.7	-0.7

Appendix continued

SCHOOL NAME	CITY	NUMBER OF GAIN SCORES OBSERVED		AVERAGE GAIN SCORE IN 2016-17			AVERAGE GAIN SCORE FROM 2014-15 TO 2016-17		
		2016-17 SCHOOL YEAR	BETWEEN 2014-15 AND 2016-17	READING+ MATH COMBINED	READING	MATH	READING+ MATH COMBINED	READING	MATH
WINTER HAVEN CHRISTIAN SCHOOL	WINTER HAVEN	90	194	-4.55	-5.23	-3.89	-1.97	-2.68	-1.29
WORSHIPERS' HOUSE OF PRAYER ACADEMY	MIAMI	39	84	3.88	3.82	3.95	0.18	-0.42	0.79
YESHIVA ELEMENTARY	MIAMI BEACH	52	142	2.57	1.48	3.43	0.8	-0.53	2.06
ZEPHYRHILLS CHRISTIAN ACADEMY	ZEPHYRHILLS	39	81	0.19	1.74	-1.36	0.2	0.8	-0.35