



OFFICE OF  
**Early Learning**  
LEARN EARLY. LEARN FOR LIFE.



FLORIDA DEPARTMENT OF  
**EDUCATION**  
fldoe.org

# Learning Update and What's Next?

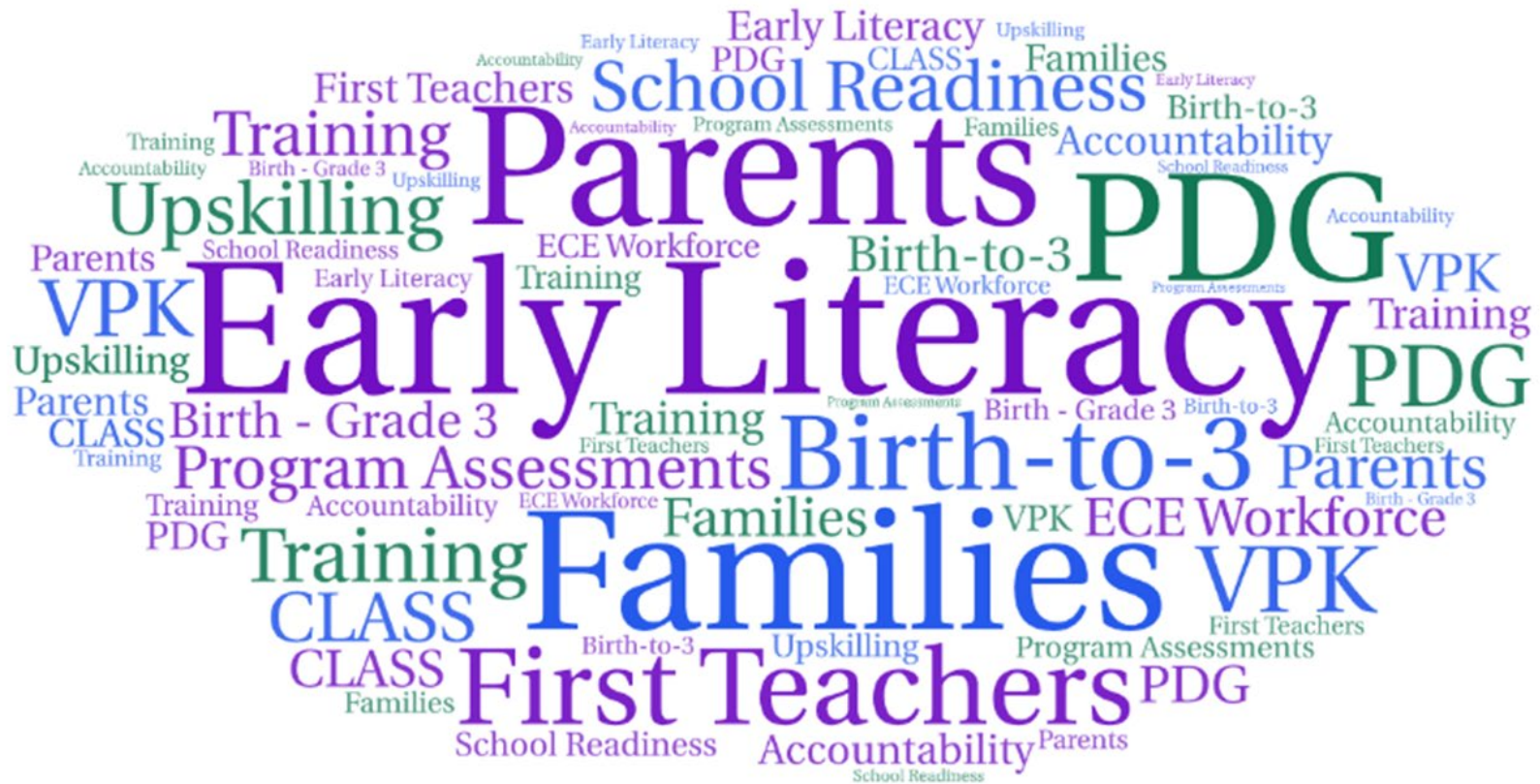
**Florida Organization of  
Instructional Leaders (FOIL)**

**Shan Goff, Executive Director  
Office of Early Learning**

**Melinda Webster, VPK Program Manager  
Office of Early Learning**

**May 12, 2021**

# Bridging PreK & K-3 Early Learning Policy & Practices



# Why it all matters....

## The First Five Years Impact Success in School and Life

*Every year 40 percent of children walk into kindergarten one-to-three years behind.*

*These students struggle to catch up. Sadly, most of them never do.*

*There is something YOU can do to help children succeed.*

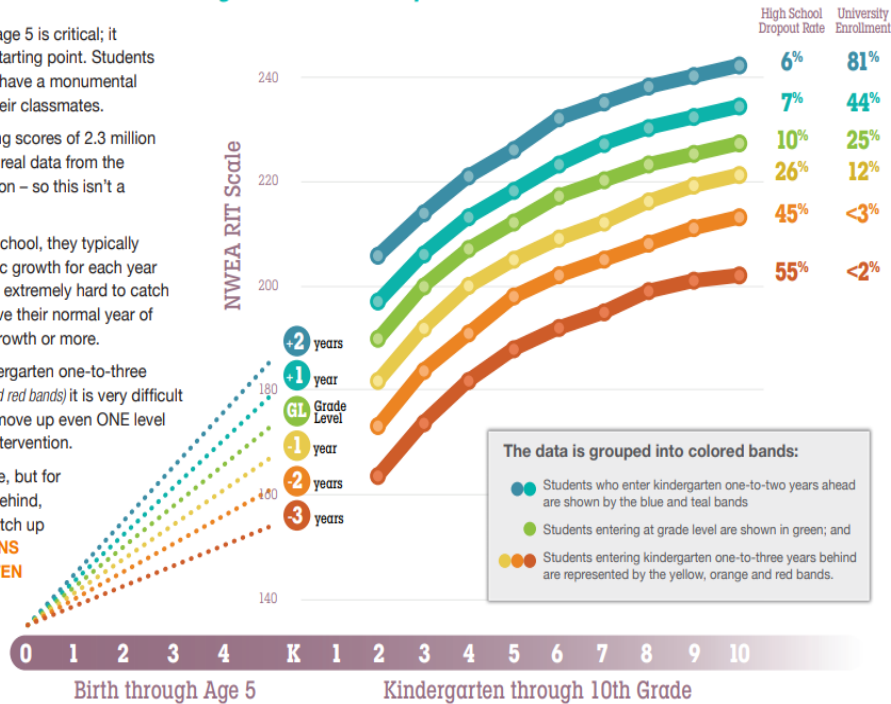
A child's learning from birth to age 5 is critical; it determines their kindergarten starting point. Students who enter kindergarten behind have a monumental undertaking to catch up with their classmates.

This chart represents the reading scores of 2.3 million students nationwide, based on real data from the Northwest Evaluation Association – so this isn't a projection.

As students progress through school, they typically only make one year of academic growth for each year in school. For those behind, it's extremely hard to catch up because they need to achieve their normal year of growth PLUS another year of growth or more.

So for students who enter kindergarten one-to-three years behind (the yellow, orange and red bands) it is very difficult to make sufficient progress to move up even ONE level without a massive amount of intervention.

All children can and will improve, but for those who enter kindergarten behind, around 75 percent will never catch up to their classmates. **THIS MEANS EACH CHILD'S KINDERGARTEN STARTING POINT MATTERS!**



©The Children's Reading Foundation® with permission from Lynn Fielding

# OEL Priorities

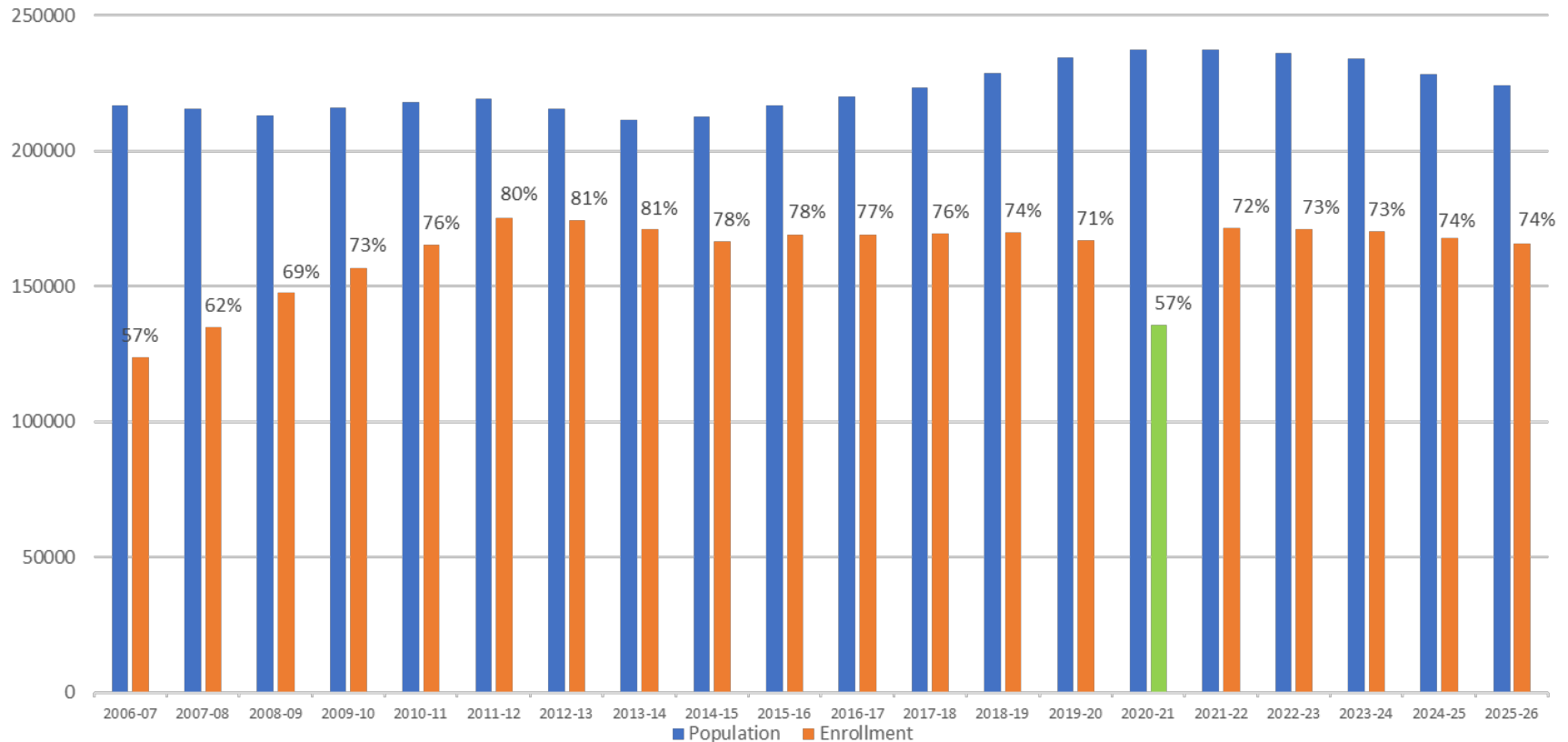


# Topics

- VPK Enrollment Projections, Trends and Next Steps
- 2020 Kindergarten Screening Results – with Caveats
- COVID-19 Federal CCDF Funding Supports for Early Learning
  - COVID Rapid Response Supplemental Appropriations (CRRSA)
  - American Rescue Act (ARP)
- Implementation of HB 419: Major Areas
- Resources and Supports
- Questions and Answers

# VPK Enrollment Trends

## VPK Program Participation Rate 2006-2007 to 2025-2026\*



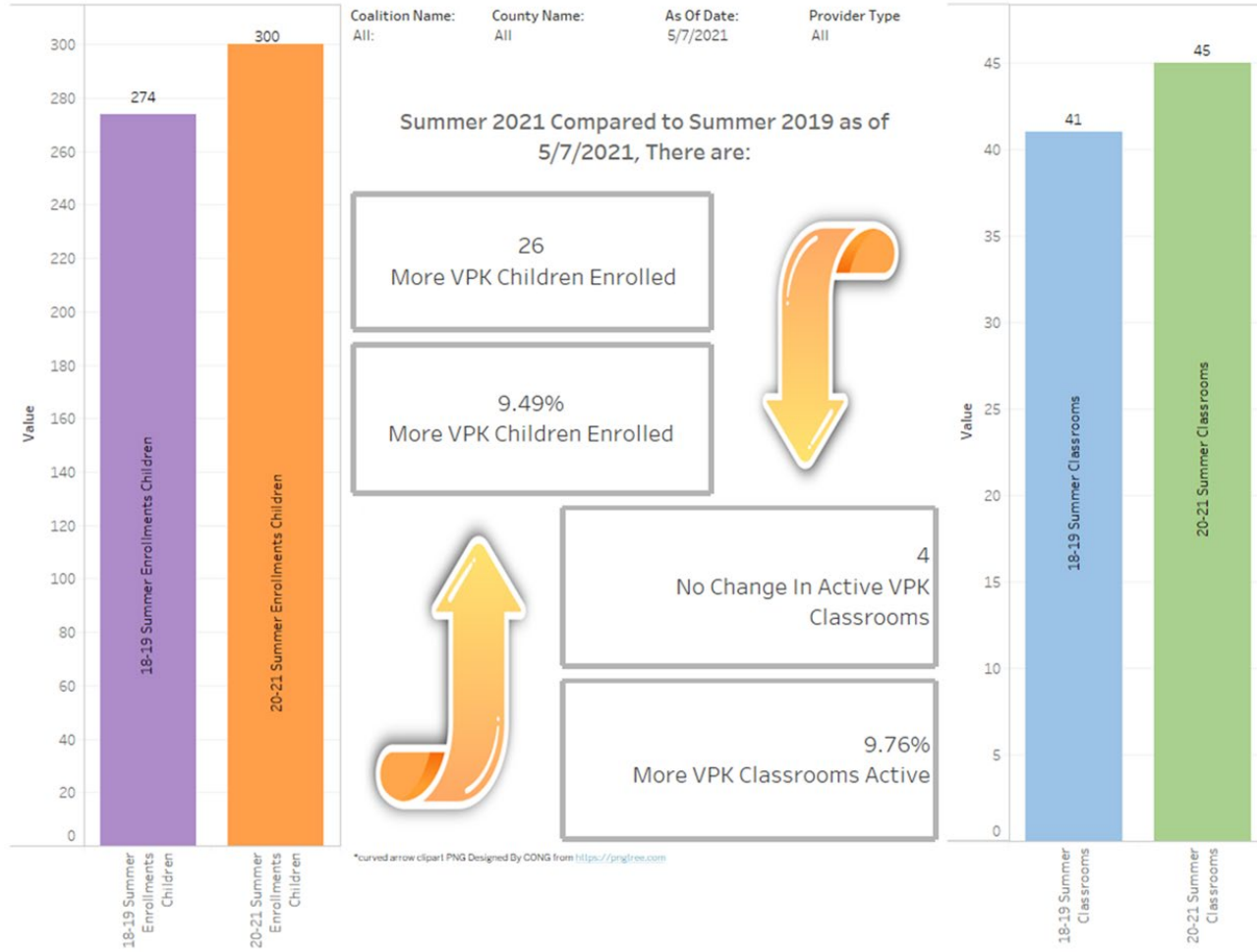
Source: Voluntary Prekindergarten Education Estimating Conference, April 1, 2021. \*2005-2006 – 2019-2020 are actual enrollments, 2020-2021 are estimated enrollments and 2021-2022 to 2025-2026 are projected enrollments.



# VPK Enrollment Trends

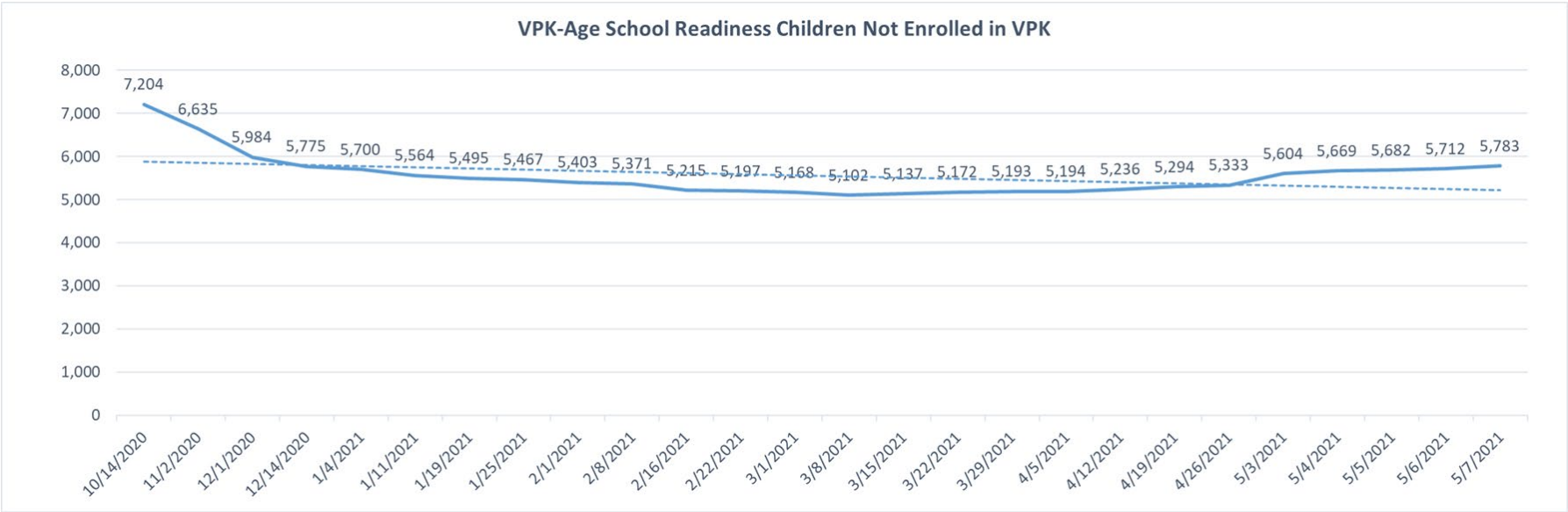


# VPK Enrollment Trends



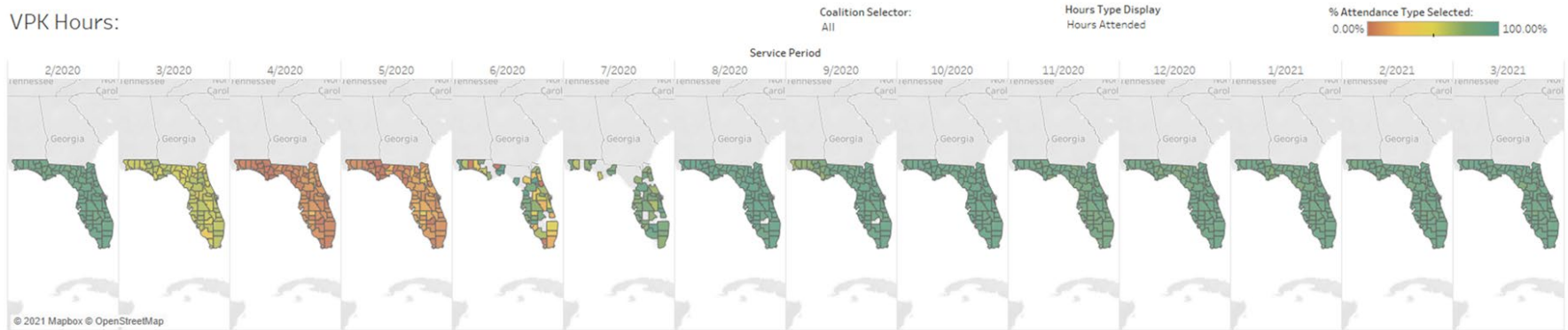


# VPK Enrollment Trends



# VPK Enrollment Trends

## VPK Hours:



## Statewide Hour Type Totals:

Hours Type Display	Service Period													
	2/2020	3/2020	4/2020	5/2020	6/2020	7/2020	8/2020	9/2020	10/2020	11/2020	12/2020	1/2021	2/2021	3/2021
Closed Reimbursable	159	2,019,203	6,802,157	4,460,716	154,870	2,722	3,908	67,206	17,874	221,274	38,615	44,038	39,073	15,942
Hours Absent	723,985	1,398,053	2,244,375	2,458,122	159,437	35,664	109,027	454,449	512,893	471,404	448,110	630,523	593,862	550,856
Hours Attended	8,311,929	4,494,310	659,972	970,920	188,520	150,906	1,868,184	5,769,932	6,661,521	4,915,954	4,592,772	6,038,349	6,428,770	5,876,040
Grand Total	9,036,072	7,911,566	9,706,504	7,889,758	502,826	189,292	1,981,119	6,291,587	7,192,288	5,608,631	5,079,498	6,712,910	7,061,704	6,442,838

## Statewide Hour Type %:

Service Period													
2/2020	3/2020	4/2020	5/2020	6/2020	7/2020	8/2020	9/2020	10/2020	11/2020	12/2020	1/2021	2/2021	3/2021
0.0%	25.5%	70.1%	56.5%	30.8%	1.4%	0.2%	1.1%	0.2%	3.9%	0.8%	0.7%	0.6%	0.2%
8.0%	17.7%	23.1%	31.2%	31.7%	18.8%	5.5%	7.2%	7.1%	8.4%	8.8%	9.4%	8.4%	8.5%
92.0%	56.8%	6.8%	12.3%	37.5%	79.7%	94.3%	91.7%	92.6%	87.6%	90.4%	90.0%	91.0%	91.2%
100.0%	100.0%	100.0%	100.0%	100.0%	100.0%	100.0%	100.0%	100.0%	100.0%	100.0%	100.0%	100.0%	100.0%

## Hour Type Totals By Coalition:

Coalition No.	Hours Type ...	Service Period													
		2/2020	3/2020	4/2020	5/2020	6/2020	7/2020	8/2020	9/2020	10/2020	11/2020	12/2020	1/2021	2/2021	3/2021
ELC of Alachua	Closed Reim...	0	17,540	57,687	40,644	132	0	1,458	282	3,444	440	537	465	156	
	Hours Absent	9,403	16,307	36,863	30,275	237	140	198	4,739	4,553	3,747	4,049	6,240	5,475	5,253
	Hours Attended	90,763	52,514	10,485	11,876	201	340	6,534	52,855	62,332	42,672	43,217	54,332	58,910	55,391
	Total	100,166	86,361	105,035	82,794	570	480	6,732	59,053	67,167	49,862	47,705	61,109	64,850	60,799
ELC of Brevard	Closed Reim...	0	80,016	254,387	182,346	1,253	0	885	2,859	765	11,706	2,317	1,726	325	1,207
	Hours Absent	20,420	20,857	20,147	24,072	308	222	2,169	12,675	15,252	14,676	13,220	17,404	17,448	15,867
	Hours Attended	251,297	132,791	9,629	15,645	1,606	1,391	50,900	198,179	219,717	162,372	143,681	184,058	199,844	191,002
	Total	271,718	233,664	284,163	222,063	3,167	1,613	53,953	213,712	235,734	188,754	159,217	203,187	217,616	208,076
ELC of Broward	Closed Reim...	0	151,950	710,802	475,169	25,750	1,970	120	297	714	27,085	1,954	1,515	1,404	1,669
	Hours Absent	56,729	103,105	163,422	267,537	44,994	3,748	8,111	30,266	41,579	35,728	38,006	49,370	50,730	49,368
	Hours Attended	857,185	717,441	917,054	829,188	105,490	31,583	155,767	477,038	609,476	458,165	443,445	594,642	638,556	603,383
	Total	9,036,072	7,911,566	9,706,504	7,889,758	502,826	189,292	1,981,119	6,291,587	7,192,288	5,608,631	5,079,498	6,712,910	7,061,704	6,442,838

\*August & September service periods do not include payments for Miami-Dade Public Schools.

# 2021-22 Appropriations

## Voluntary Prekindergarten (VPK) Budget Highlights – Line Item #86

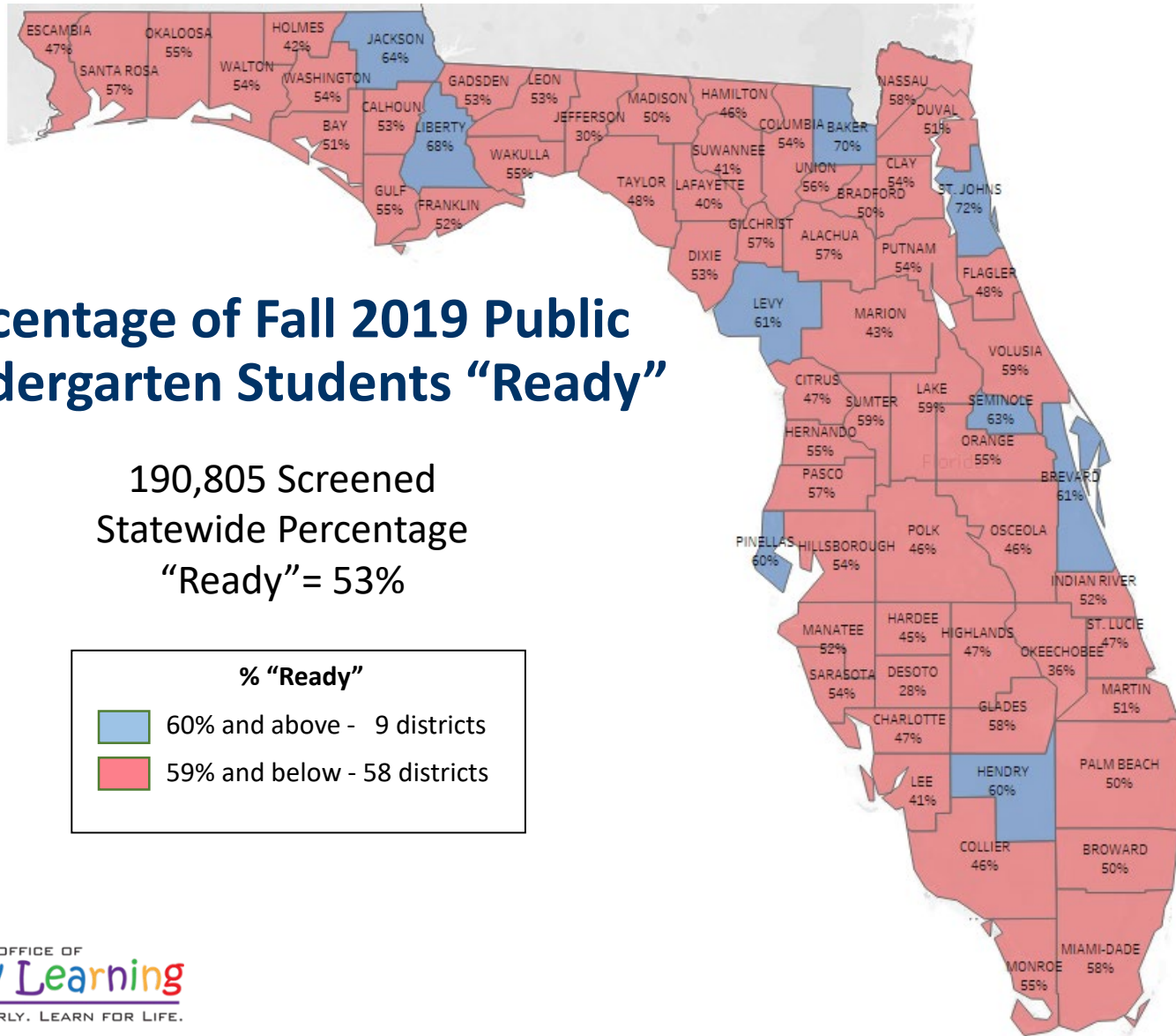
Fund Source	2020-2021 Legislative Appropriation	2021-2022 Legislative Appropriation	Increase/Decrease
General Revenue (GR)	\$ 412,158,049	\$ 408,568,112	\$ (3,589,937)
<b>Total</b>	<b>\$ 412,158,049</b>	<b>\$ 408,568,112</b>	<b>\$ (3,589,937)</b>

## VPK Base Student Allocation (BSA)

2021-2022 School-Year           \$2,486

2021-2022 Summer               \$2,122

# Kindergarten Readiness by County



# Kindergarten Readiness by County

## Caveats for Fall 2020 Kindergarten Screening Data

- There are significant differences in the number of students participating in FLKRS when observed at the county and statewide level from fall 2019 to fall 2020.
- Statewide there were nearly 60,000 fewer students screened on FLKRS.
- Some of Florida's largest counties have only a fraction of the students screened when compared to fall 2019.
- Due to circumstances related to the opening of Florida schools, the administration of FLKRS was not standardized in terms of the typical screening window.
- The above should be considered when reviewing the change in performance shown on the following charts at the statewide and county level.
- Information related to attendance in VPK is not yet available to consider with this data and it is unclear of the effects a lack of a "normal" preschool experience for those students now in kindergarten impacted kindergarten readiness.

# Kindergarten Readiness by Florida District

## Fall 2019 and Fall 2020 Florida Kindergarten Readiness Screener (FLKRS) District/State Results

District Number	District Name	2019-20			2020-21			Net Change of % Ready from 2019-20 to 2020-21	Net Change in # Tested from 2019-20 to 2020-21	Percent Change
		# Test Takers	# Scoring 500+	% Scoring 500+	# Test Takers	# Scoring 500+	% Scoring 500+			
<b>00</b>	<b>FLORIDA</b>	<b>190,805</b>	<b>101,818</b>	<b>53%</b>	<b>133,632</b>	<b>76,098</b>	<b>57%</b>			
01	ALACHUA	2,207	1,256	57%	1,328	775	58%	+4	-57,173	-30%
02	BAKER	380	266	70%	324	189	58%	+1	-879	-40%
03	BAY	1,661	848	51%	1,261	650	52%	-12	-56	-15%
04	BRADFORD	255	127	50%	157	81	52%	0	-400	-24%
05	BREVARD	4,875	2,985	61%	4,380	2,591	59%	+2	-98	-38%
06	BROWARD	18,022	9,052	50%	6,507	4,265	66%	-2	-495	-10%
07	CALHOUN	129	68	53%	109	59	54%	+15	-11,515	-64%
08	CHARLOTTE	1,076	506	47%	921	464	50%	+1	-20	-16%
09	CITRUS	1,060	493	47%	767	385	50%	+3	-155	-14%
10	CLAY	2,544	1,362	54%	2,312	1,326	57%	+4	-293	-28%
11	COLLIER	3,051	1,395	46%	2,568	1,273	50%	+4	-232	-9%
12	COLUMBIA	739	402	54%	662	388	59%	+4	-483	-16%
13	MIAMI-DADE	20,538	12,012	58%	13,323	9,498	71%	+4	-77	-10%
14	DESOTO	353	100	28%	284	85	30%	+13	-7,215	-35%
15	DIXIE	176	93	53%	130	87	67%	+2	-69	-20%
16	DUVAL	9,196	4,694	51%	7,339	3,965	54%	+14	-46	-26%
17	ESCAMBIA	2,799	1,309	47%	2,247	1,081	48%	+3	-1,857	-20%
18	FLAGLER	822	391	48%	660	363	55%	+1	-552	-20%
19	FRANKLIN	92	48	52%	97	43	44%	+7	-162	-20%
20	GADSDEN	305	162	53%	305	156	51%	-8	5	5%
21	GILCHRIST	223	127	57%	212	110	52%	-2	0	0%
22	GLADES	154	89	58%	112	67	60%	-5	-11	-5%
23	GULF	146	80	55%	116	79	68%	+2	-42	-27%
24	HAMILTON	112	51	46%	88	38	43%	+13	-30	-21%
25	HARDEE	423	189	45%	361	117	32%	-2	-24	-21%
26	HENDRY	494	295	60%	990	764	77%	-12	-62	-15%
27	HERNANDO	1,486	821	55%	1,439	751	52%	+17	496	100%
28	HIGHLANDS	880	411	47%	685	268	39%	-3	-47	-3%
29	HILLSBOROUGH	15,764	8,580	54%	10,044	5,194	52%	-8	-195	-22%
30	HOLMES	232	98	42%	175	71	41%	-3	-5,720	-36%
31	INDIAN RIVER	1,216	628	52%	937	548	58%	-2	-57	-25%
								+7	-279	-23%

Note: all percentages shown reflect rounding.



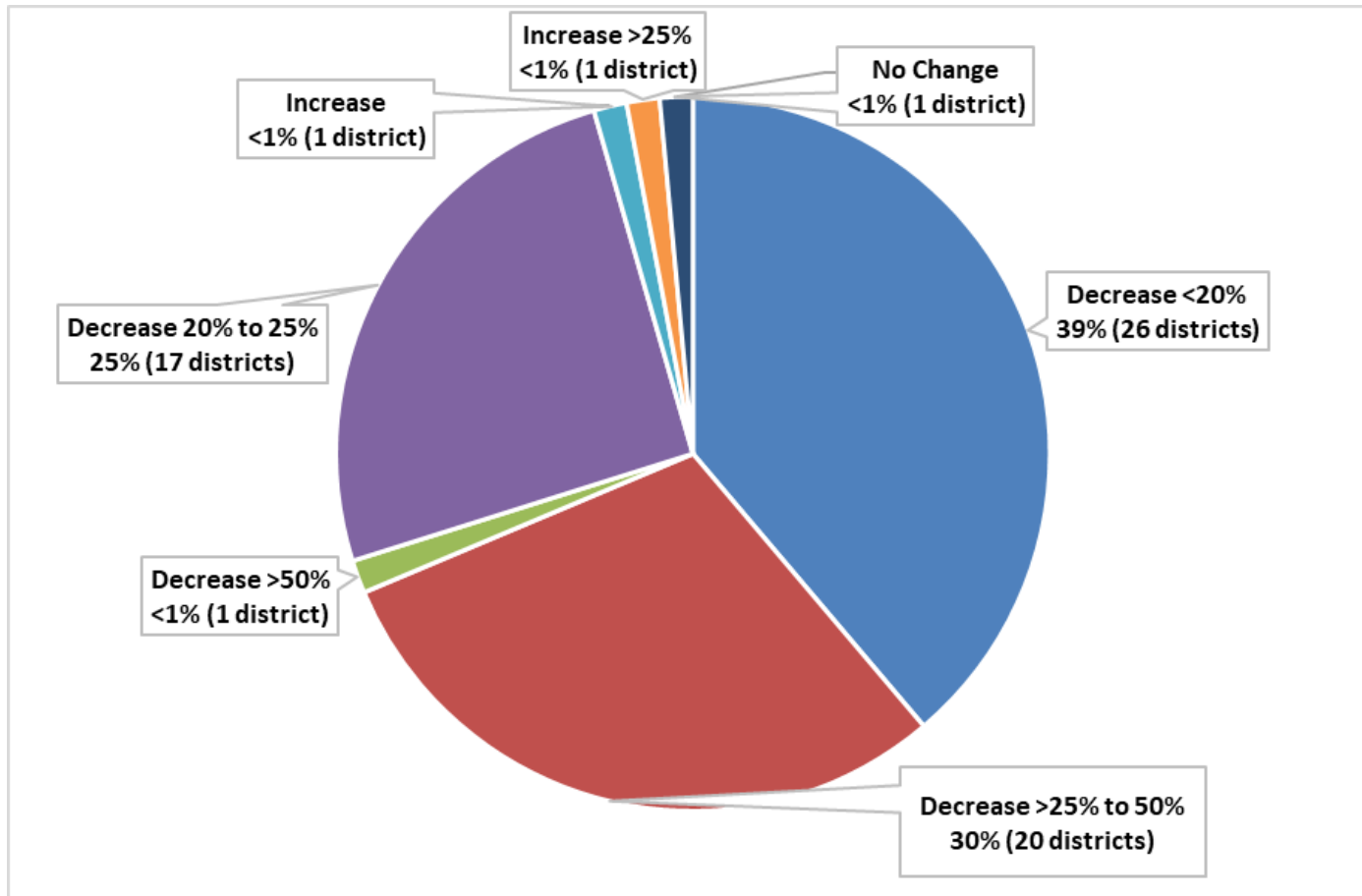
# Kindergarten Readiness by County

District Number	District Name	2019-20			2020-21			Net Change of % Ready from 2019-20 to 2020-21	Net Change in # Tested from 2019-20 to 2020-21	
		# Test Takers	# Scoring 500+	% Scoring 500+	# Test Takers	# Scoring 500+	% Scoring 500+		# Tested	Percent Change
32	JACKSON	457	292	64%	411	224	55%	-9	-46	-10%
33	JEFFERSON	47	14	30%	31	10	32%	+2	-16	-34%
34	LAFAYETTE	95	38	40%	49	26	53%	+13	-46	-48%
35	LAKE	3,097	1,829	59%	2,314	1,341	58%	-1	-783	-25%
36	LEE	6,469	2,649	41%	4,745	2,206	46%	+6	-1,724	-27%
37	LEON	2,454	1,312	53%	1,361	839	62%	+8	-1,093	-45%
38	LEVY	422	256	61%	366	192	52%	-8	-56	-13%
39	LIBERTY	80	54	68%	74	45	61%	-7	-6	-8%
40	MADISON	185	93	50%	136	87	64%	+14	-49	-26%
41	MANATEE	3,459	1,803	52%	2,878	1,536	53%	+1	-581	-17%
42	MARION	2,898	1,252	43%	2,464	1,034	42%	-1	-434	-15%
43	MARTIN	1,293	661	51%	980	459	47%	-4	-313	-24%
44	MONROE	645	356	55%	473	273	58%	+3	-172	-27%
45	NASSAU	900	520	58%	788	391	50%	-8	-112	-12%
46	OKALOOSA	2,450	1,339	55%	2,057	1,152	56%	+1	-393	-16%
47	OKEECHOBEE	496	179	36%	320	114	36%	0	-176	-35%
48	ORANGE	13,637	7,530	55%	7,567	4,245	56%	+1	-6,070	-45%
49	OSCEOLA	4,397	2,012	46%	3,670	1,741	47%	+2	-727	-17%
50	PALM BEACH	13,065	6,487	50%	8,893	5,350	60%	+11	-4,172	-32%
51	PASCO	5,269	3,009	57%	4,596	2,735	60%	+2	-673	-13%
52	PINELLAS	6,881	4,110	60%	5,525	3,264	59%	-1	-1,356	-20%
53	POLK	7,487	3,432	46%	5,307	2,365	45%	-1	-2,180	-29%
54	PUTNAM	826	444	54%	645	315	49%	-5	-181	-22%
55	ST. JOHNS	2,782	2,016	72%	2,242	1,500	67%	-6	-540	-19%
56	ST. LUCIE	2,616	1,240	47%	1,916	939	49%	+2	-700	-27%
57	SANTA ROSA	1,825	1,038	57%	1,484	1,151	78%	+21	-341	-19%
58	SARASOTA	2,819	1,523	54%	2,189	1,209	55%	+1	-630	-22%
59	SEMINOLE	4,463	2,803	63%	2,950	1,772	60%	-3	-1,513	-34%
60	SUMTER	661	391	59%	581	332	57%	-2	-80	-12%
61	SUWANNEE	462	189	41%	349	169	48%	+8	-113	-24%
62	TAYLOR	201	97	48%	179	78	44%	-5	-22	-11%
63	UNION	239	135	56%	213	124	58%	+2	-26	-11%
64	VOLUSIA	4,290	2,531	59%	2,831	1,634	58%	-1	-1,459	-34%
65	WAKULLA	352	195	55%	324	169	52%	-3	-28	-8%
66	WALTON	785	422	54%	671	346	52%	-2	-114	-15%
67	WASHINGTON	276	149	54%	214	99	46%	-8	-62	-22%
71	FL VIRTUAL	121	115	95%	677	656	97%	+2	556	460%
72	FAU LAB SCH	196	152	78%	138	111	80%	+2	-58	-30%
73	FSU LAB SCH	208	148	71%	137	99	72%	+1	-71	-34%
74	FAMU LAB SCH	37	28	76%	47	35	74%	-2	10	27%
75	UF LAB SCH	53	37	70%	0	0	0%	NA	-53	-100%

Note: all percentages shown reflect rounding.



# Difference in Number of Students Screened – Fall 2000 and Fall 2019



Many districts experienced significantly lower numbers of students screened on FLKRS in Fall 2020, as there was a statewide decrease of 30%; 56% of all districts experienced a 20% or more decrease in students screened and only three districts did not have a decrease.

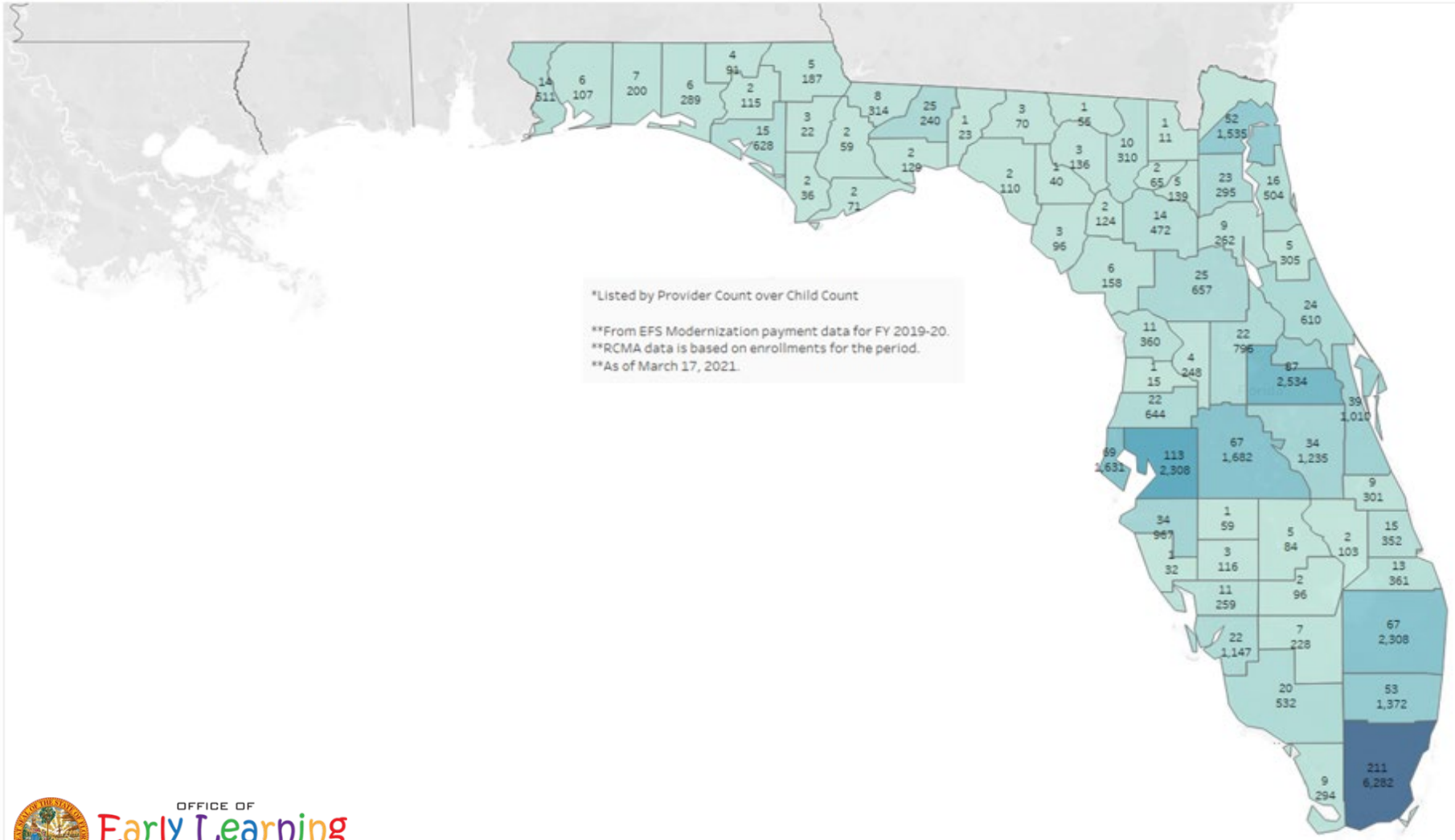




# 2019-20 VPK Public School Programs by District

VPK Public School Providers and Children by County for Fiscal Year 2019-2020

1,305 Providers / 37,400 Children

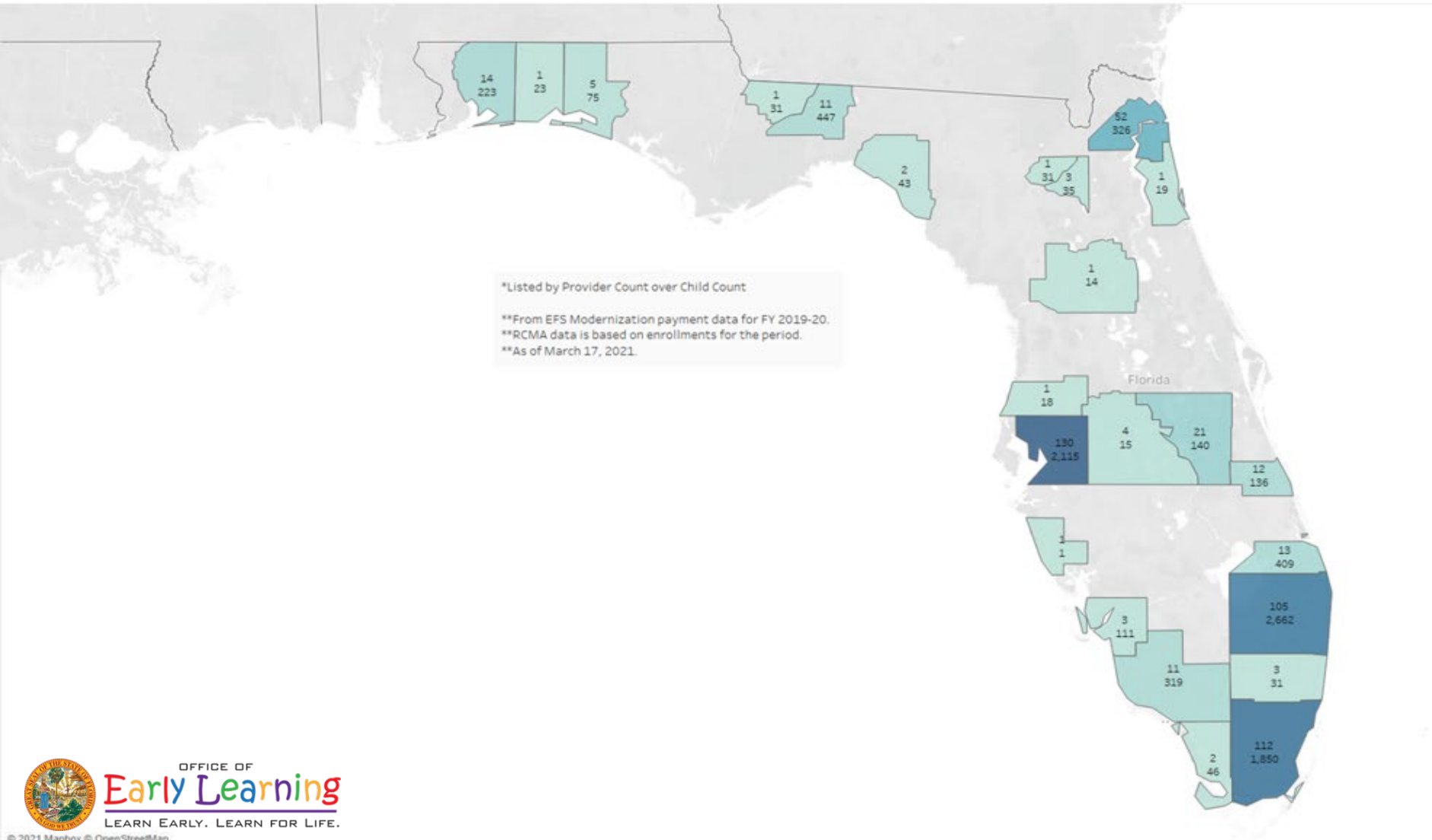


\*Listed by Provider Count over Child Count  
 \*\*From EFS Modernization payment data for FY 2019-20.  
 \*\*RCMA data is based on enrollments for the period.  
 \*\*As of March 17, 2021.



# 2019-20 School Readiness Programs by District

School Readiness Public School Providers and Children by County for Fiscal Year 2019-2020  
 510 Providers / 9,120 Children



# COVID-19 Federal CCDF Support

## OEL Action Plan

The Florida Office of Early Learning's guiding principles for fund allotment are as follows:

- *Strategically rebuild the early childhood education and care landscape with an emphasis on quality providers.*
- *Provide learning opportunities to our youngest students to identify and remediate potential learning losses given the impact of the pandemic.*
- *Enhance the early childhood education and care workforce through incentives to upskill and improve their skills, competency and professionalism.*
- *Provide local early learning coalitions with flexibility, as appropriate, to leverage established partnerships and available resources.*

### CARES Act Funding

Child Care for First Responders & Health Care Workers: April 2020

**\$102,683,752** allocated to provide child care for children of first responders and health care workers along with a monthly incentive of \$500 per child for eligible early learning/child care providers with SR contracts

### CARES Act Funding

2020 Rising Kindergarten Program: July 2020

**\$10,915,461** allocated to the creation of the Rising K Program in an effort to minimize potential loss of learning due to school and private prekindergarten program closures

### CRRSA Funding

Proposed Allocations: Obligated by Sept. 2022 & liquidated by Sept. 2023

**\$634,960,833** proposed to fund the following priorities: Phase V & VI Grants to Child Care and Early Learning Providers, Instructor Bonuses, SR Parent Copayments and MORE

### ARP Funding - Child Care Stabilization Grants

Proposed Allocations: Obligated by Sept. 2022 & liquidated by Sept. 2023

**\$1,523,107,778** proposed to fund 2021-22 Child Care Stabilization Grants, 2022-23 Child Care Stabilization Grants, SR Parent Copayments and SR Parent Differentials



### CARES Act Funding

School Readiness Parent Copayments: April 2020

**\$18,303,500** waived required SR copayments for parents and reimbursed SR based on enrollment as opposed to attendance

### CARES Act Funding

Phase I, II, III and IV Grants: June - Sept. 2020

**\$88,016,760** supported SR and VPK providers, contracted public/charter school providers, program assessment (CLASS) exempt providers and non-contracted providers

### ARP Funding - CCDF Discretionary

Proposed Allocations: Obligated by Sept. 2022 & liquidated by Sept. 2023

**\$950,379,359** proposed to address the need to recruit and retain qualified staff and provide flexibility to the initial and exit income eligibility threshold for SR families

# 2021-22 Appropriations

## Office of Early Learning Highlights – Line Item #80A/B

*\*Contingent upon signature by the Governor*

**\$348,285,903 – CCDF CRRSA**

- Budget amendments to be developed in collaboration with coalitions, child care providers, the CSC, and provider associations.

**\$166,238,432 – CCDF CRRSA**

- Two bonuses to child care and early learning instructors for a net amount of \$1,000 each. First bonus application available July 1, 2021 and distributed by October 30, 2021. Second bonus distributed no later than April 30, 2022.

# 2021 Legislation Implementation

CLASS  
Transition to Kindergarten  
Curriculum Screening and Progress Monitoring  
Accountability Early Learning Standards  
Literacy Assessment HB 7011 HB 7011  
Screening and Progress Monitoring VPK Program Accountability  
HB 419 Transition to Kindergarten Curriculum CLASS  
HB 419 Literacy Accountability Early Learning Standards  
VPK Program Accountability  
Assessment

# 2021 Legislation Implementation

## HB 419 - EARLY LEARNING AND EARLY GRADE SUCCESS PRIORITIES FOR IMPLEMENTATION



1

Early Learning  
Providers



2

Gold Seal  
Program



3

VPK Accountability  
& Program  
Assessments



4

VPK - Grade 3  
Progress  
Monitoring



5

Coalition  
Governance



6

OEL/DOE  
Governance

# 2021 Legislation Implementation

## HB 419 – Early Learning and Grades Success

### Early Learning Providers

- CCR&R profiles
- Contracts
- Gold Seal
- VPK training



HB 419 - EARLY LEARNING AND EARLY GRADE SUCCESS  
PRIORITIES FOR IMPLEMENTATION

### Gold Seal Program

- Revised requirements
- Provider differentials
- Transfers to Division of Early Learning



HB 419 - EARLY LEARNING AND EARLY GRADE SUCCESS  
PRIORITIES FOR IMPLEMENTATION

### VPK Accountability & Program Assessments

- Program assessments
- Provider readiness rate calculation
- Performance metric/designation for providers
- Provider differentials



HB 419 - EARLY LEARNING AND EARLY GRADE SUCCESS  
PRIORITIES FOR IMPLEMENTATION

### VPK - Grade 3 Progress Monitoring

- Progress monitoring in 2022-23
- Early Grade Success Committee



HB 419 - EARLY LEARNING AND EARLY GRADE SUCCESS  
PRIORITIES FOR IMPLEMENTATION





# 2021 Legislation Implementation

## HB 419 – Early Learning and Grades Success

### Coalition Governance

- Board composition
- State Board enforcement
- Performance measures
- Coordinated professional development



HB 419 - EARLY LEARNING AND EARLY GRADE SUCCESS  
PRIORITIES FOR IMPLEMENTATION

### OEL/DOE Governance

- Administrative/oversight functions
- State Board authority
- Gold Seal



HB 419 - EARLY LEARNING AND EARLY GRADE SUCCESS  
PRIORITIES FOR IMPLEMENTATION

# CARES Funding: VPK Progress Monitoring Pilot

## 2020-21 Pilot Participation

- 35,738 VPK Students
- 1,523 VPK providers
  - 69% Private VPK Providers
  - 31% Public School Providers
- 45 School Districts



# CARES Funding: VPK Progress Monitoring Pilot

## VPK Progress Monitoring Pilot Goals

- Provide opportunity for VPK providers to implement Star Early Literacy in their VPK programs in the 2020-21 and 2021-22 school years.
- Provide a more comprehensive overview of the learning and growth continuum during critical early learning years.
- 35,738 VPK Students; 1,523 VPK providers
  - 69% Private VPK Provider
  - 31% Public School Providers - 45 School Districts

# VPK Progress Monitoring Pilot

## VPK Progress Monitoring Pilot Resources

For more information please visit the dedicated web page at <http://www.floridaearlylearning.com/vpk/vpk-star-early-literacy-assessment-pilot>



Communication



Resources



Training



Implementation

# Preschool Development Grant

## PDG Birth through Five Renewal Grant

Designed to support states in **coordinating and aligning early childhood care and education (ECE) programs, resources, and services** that already exist, thereby:

- Improving **program quality**.
- Expanding access to targeted **professional development**.
- Facilitating better **partnerships** between programs.
- Improving **transitions** from ECE programs into elementary school.
- Increasing program operating and cost **efficiencies**.
- Expanding **parental choices and involvement**.
- Ensuring **families are linked** to the full range of services they need.



# PDG Transition to Kindergarten Virtual Summits



## Integrating Promising Practices to Support Early Literacy and Successful Transitions Prek-K



- Each two half-day virtual summit provides content intended to support early learning coalitions, school districts and preschool and public school educators as they plan for students' successful transitions to kindergarten.
  - April 20-21, 2021: North Region (182 Participants)
  - April 27-28, 2021: Central Region (214 Participants)
  - May 4-5: South Region (244 Participants)

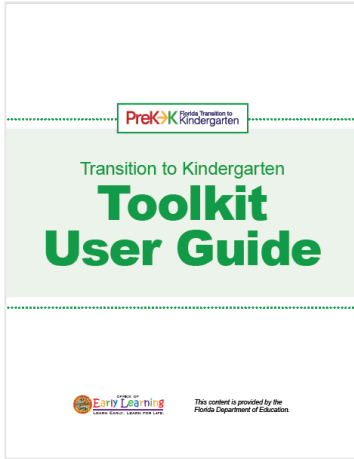
### Transition to Kindergarten Website:

<http://www.floridaearlylearning.com/vpk/families/transition-to-kindergarten>

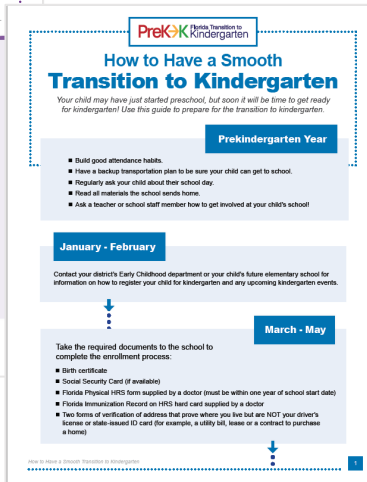
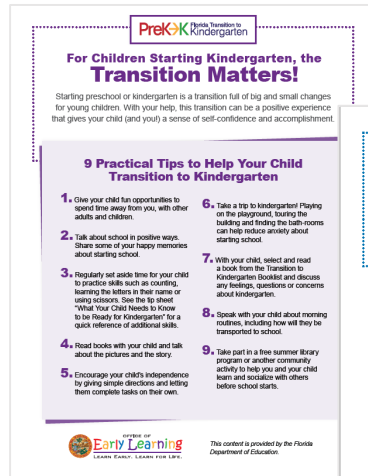


# Transition to Kindergarten Toolkit

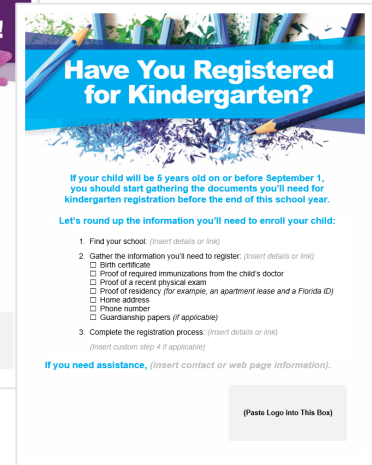
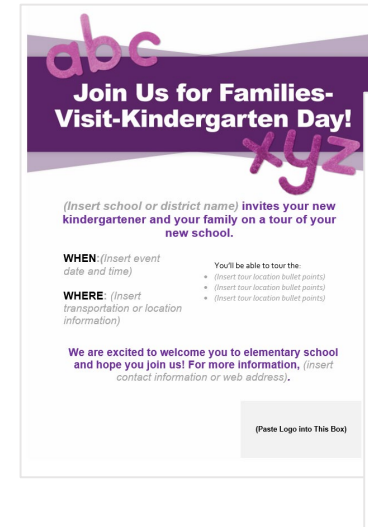
## Toolkit Guide



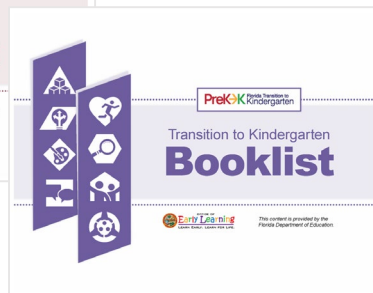
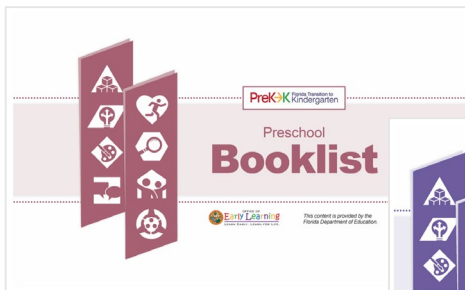
## Tip Sheets



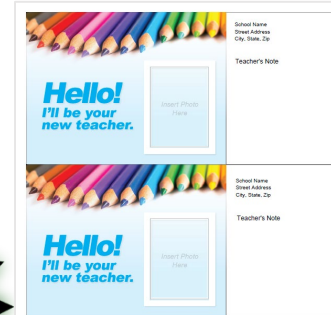
## Customizable Flyers



## Booklists

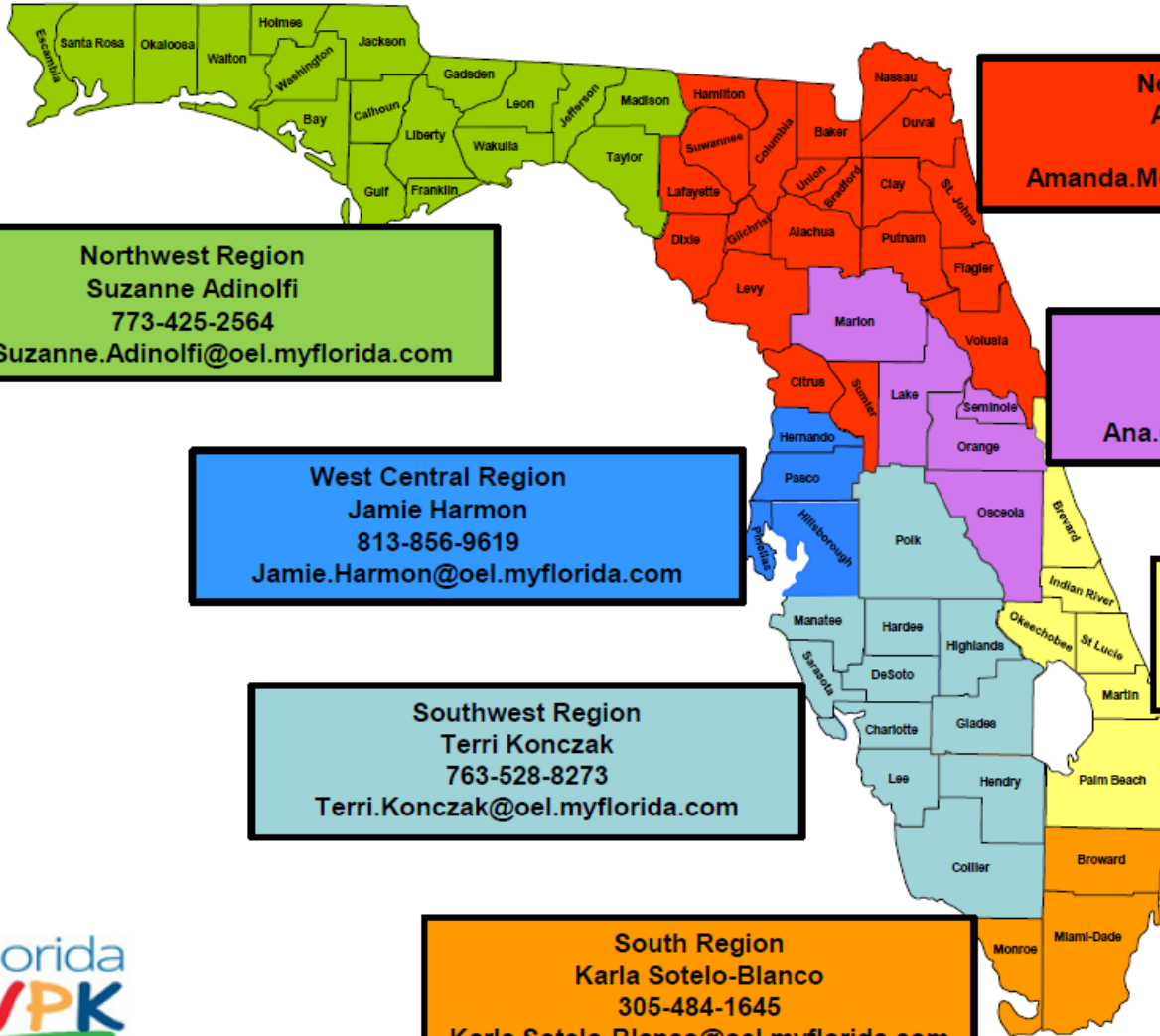


And more...



# Voluntary Prekindergarten (VPK) Education Program

## VPK Regional Facilitators



**Northwest Region**  
Suzanne Adinolfi  
773-425-2564  
Suzanne.Adinolfi@oel.myflorida.com

**West Central Region**  
Jamie Harmon  
813-856-9619  
Jamie.Harmon@oel.myflorida.com

**Southwest Region**  
Terri Konczak  
763-528-8273  
Terri.Konczak@oel.myflorida.com

**South Region**  
Karla Sotelo-Blanco  
305-484-1645  
Karla.Sotelo-Blanco@oel.myflorida.com

**Northeast Region**  
Amanda Moore  
904-718-0723  
Amanda.Moore@oel.myflorida.com

**Central Region**  
Ana Gonzalez  
321-220-0709  
Ana.Gonzalez@oel.myflorida.com

**Southeast Region**  
Heather Sargent  
561-628-0250  
Heather.Sargent@oel.myflorida.com

**South Region**  
Ana Roa  
305-801-4853  
Ana.Roa@oel.myflorida.com





# Questions?



**Shan Goff, Executive Director**  
**Melinda Webster, VPK Manager**

Office of Early Learning

250 Marriott Drive | Tallahassee, FL 32399

850.717.8550 | Toll Free 866.357.3239