



English Language Learners Update December 2015

Florida Organization of Instructional Leaders
(FOIL) Conference



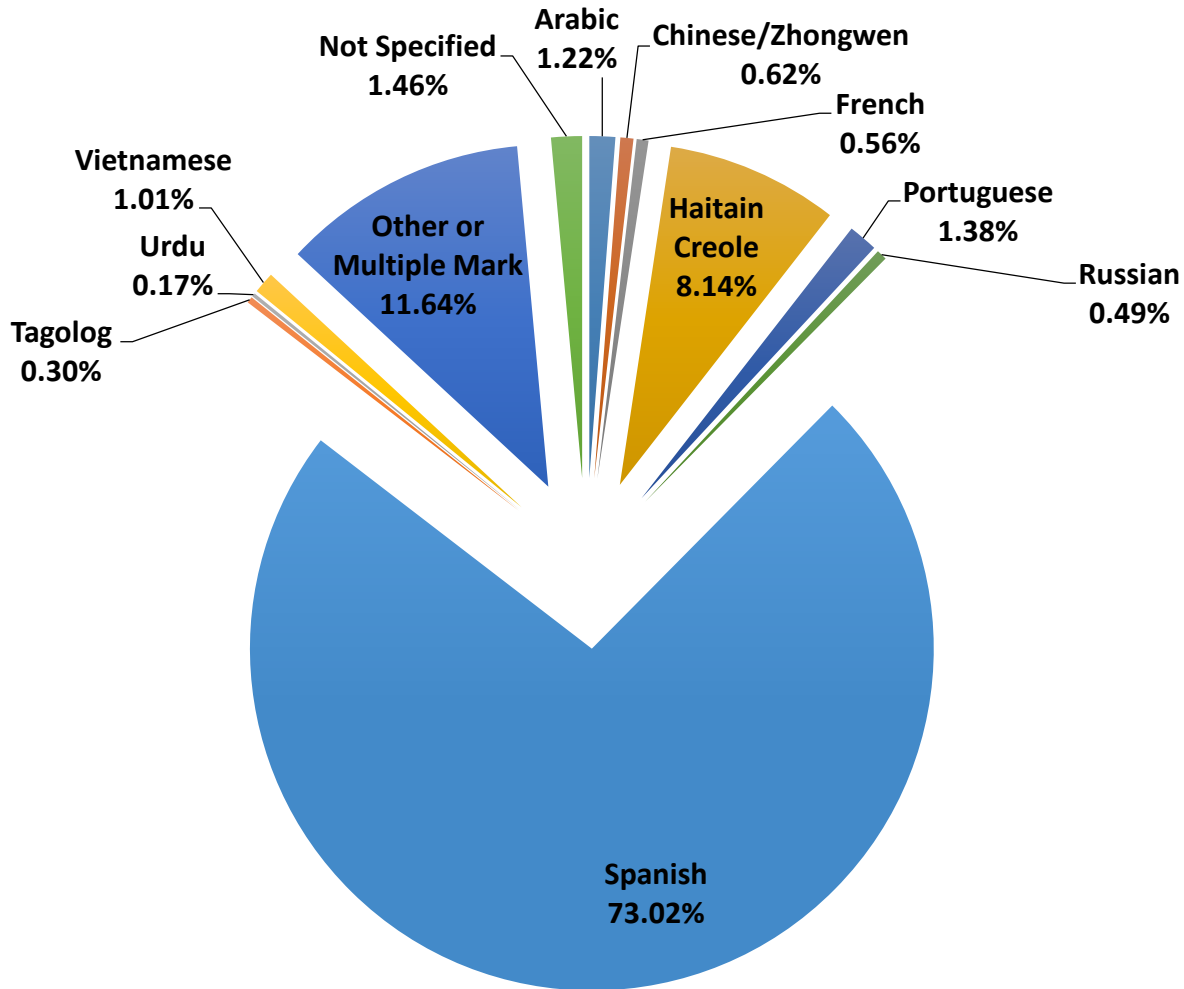
www.FLDOE.org

Agenda

1. Who are our English Language Learners (ELLs)?
2. What are Florida's English Language Development (ELD) Standards and where can I find them?
3. What accommodations and instructional practices do we expect to see when observing classrooms with ELLs?
4. What trainings have been available on Florida's ELD Standards?
5. What does our ELL performance on statewide assessments look like?
6. What does our ELL performance on Annual Measurable Achievement Objectives (AMAOs) look like?
7. What does our ELL graduation rate look like?
8. How long are our ELLs in the English for Speakers of Other Languages (ESOL) Program?
9. How many of our ELLs are enrolled in advanced courses?
10. How many of our ELLs are not promoted in grades 3 and 10?
11. What information is available on our new English language proficiency assessment?

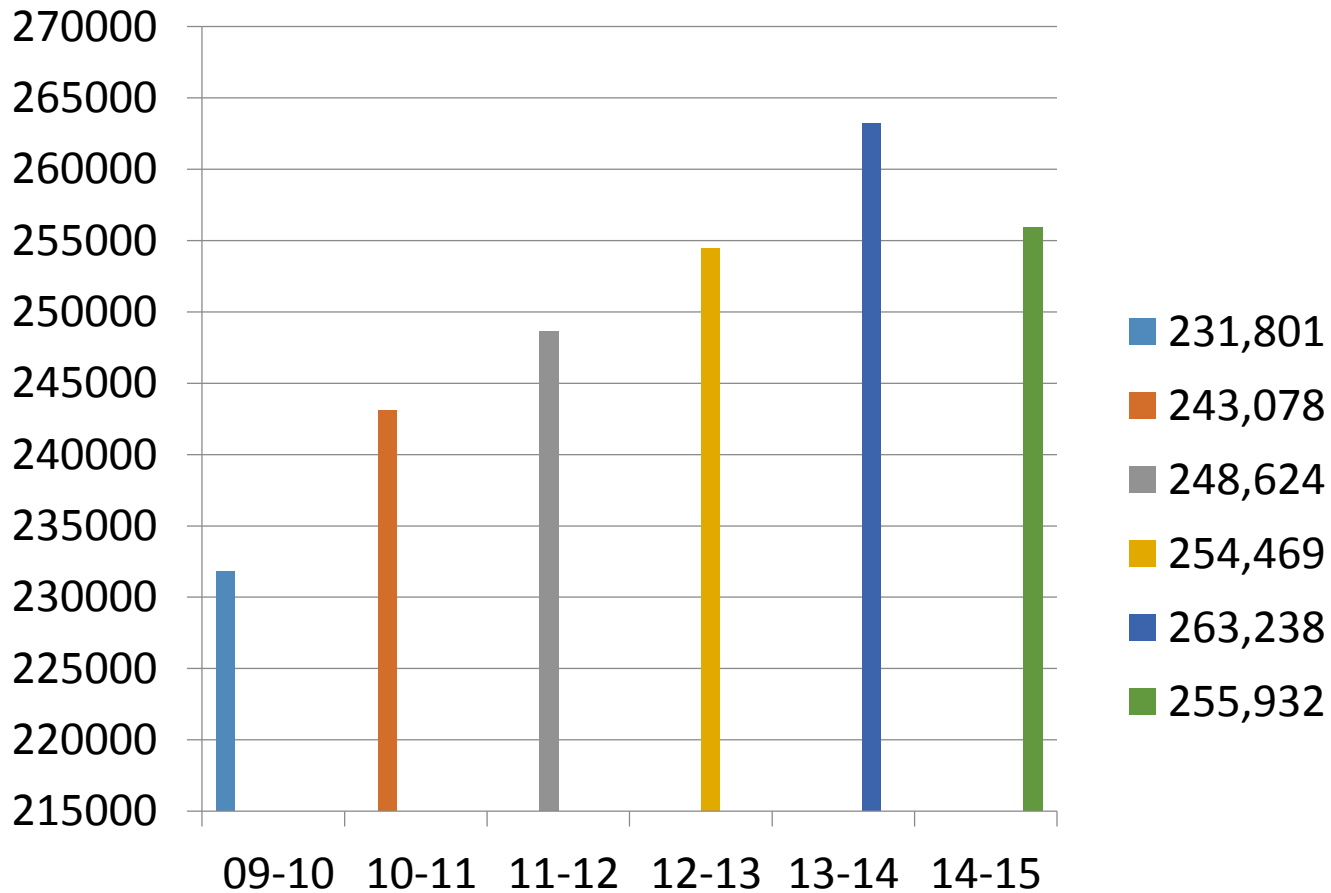
Who are our English Language Learners (ELLs)?

Home Language of English Language Learners



Source: Florida 2015 Spring CELLA State Results

English Language Learner Population



Source: Survey 3



It is like this: two pieces of the puzzle for ELLs:
content and language. Both need to be
integrated for ELL academic success.

What are Florida's English Language Development (ELD) Standards and where can I find them?

Florida's English Language Development (ELD) Standards from WIDA

Five Standards from WIDA

- Social and Instructional Language
- Language of Language Arts
- Language of Math
- Language of Science
- Language of Social Studies
- Web Resources: www.wida.us
- Especially WIDA's 2012 Amplification of the ELD Standards

Florida's English Language Development (ELD) Standards from WIDA



Social &
Instructional
Language



Language of
Language
Arts



Language of
Mathematics



Language of
Science



Language of
Social Studies

Academic Language

Florida's English Language Development (ELD) Standards from WIDA

Five Standards from WIDA

- Social and Instructional Language - English language learners communicate for social and instructional purposes within the school setting.
- Language of Language Arts - English language learners communicate information, ideas and concepts necessary for academic success in the content area of Language Arts.
- Language of Math - English language learners communicate information, ideas and concepts necessary for academic success in the content area of Math.
- Language of Science - English language learners communicate information, ideas and concepts necessary for academic success in the content area of Science.
- Language of Social Studies - English language learners communicate information, ideas and concepts necessary for academic success in the content area of Social Studies.
- Web Resources: www.wida.us
- Especially WIDA's 2012 Amplification of the ELD Standards

Florida's English Language Development (ELD) Standards from WIDA-Resources

- ELD Standards are now available on CPALMS at cpalms.org in course descriptions and under the standards tab.
- For 2015 and beyond, every course description will include the language of social and instructional purposes standard.
- For 2015 and beyond, the content specific standard (language arts, math, science or social studies) has been added where appropriate.
- An explanation has been added in the notes section of each course.
- A link to a document delineating performance definitions and descriptors has been added.

Florida's English Language Development (ELD) Standards from WIDA-Resources

- The supporting document, performance definitions and descriptors, contains descriptions of what an English Language Learners (ELLs) know and can do in listening, speaking, reading and writing at five different English proficiency levels.
- This supporting document also includes global strategies to assist instruction
- In the future I hope to have links to documents with greater specificity within a particular discipline, like science, and training opportunities also
- See Link to Video Interview for Florida Science Educators:
<https://fldoe.wistia.com/medias/ggdr13fg21>

What trainings have been available on Florida's ELD Standards?

Trainings for English Language Development Standards Implementation

- August 25-28, 2015 - Tallahassee host district, northwest, northeast – Completed
- October 5-8, 2015 – Miami host district, south – Completed
- October 26-29, 2015 – Lake Mary host district, east central – Completed
- November 30 – December 3, 2015 – Registration Closed
 - Palm Beach Gardens host district, southeast
 - Tampa host district, west central

Trainings for English Language Development Standards Implementation

- Online Options – Trainings Currently Available
 - WIDA
 - Introduction to English Language Development Standards Framework Webinar
 - Link: <https://vimeo.com/140352725>
 - Packet: <https://www.wida.us/get.aspx?id=1866>
 - iCPALMS
 - PCG – K-5 Supporting English Language Learners in Standards-Based Instruction in ELA & Literacy
 - PCG – 6-12 Supporting English Language Learners in Standards-Based Instruction in ELA & Literacy

Reminder: English Language Arts Formative Assessment System (ELFAS)

- Teacher support tools for implementation of the Language Arts Florida Standards
- Goal: to develop, review, and align formative assessment activities
- Vetted Resources
- Interactive Tools
- Florida educator log in through FLDOE Single Sign On (SSO) available
- <https://portal.fldoesso.org/PORTAL/Sign-on/SSO-Home.aspx/>

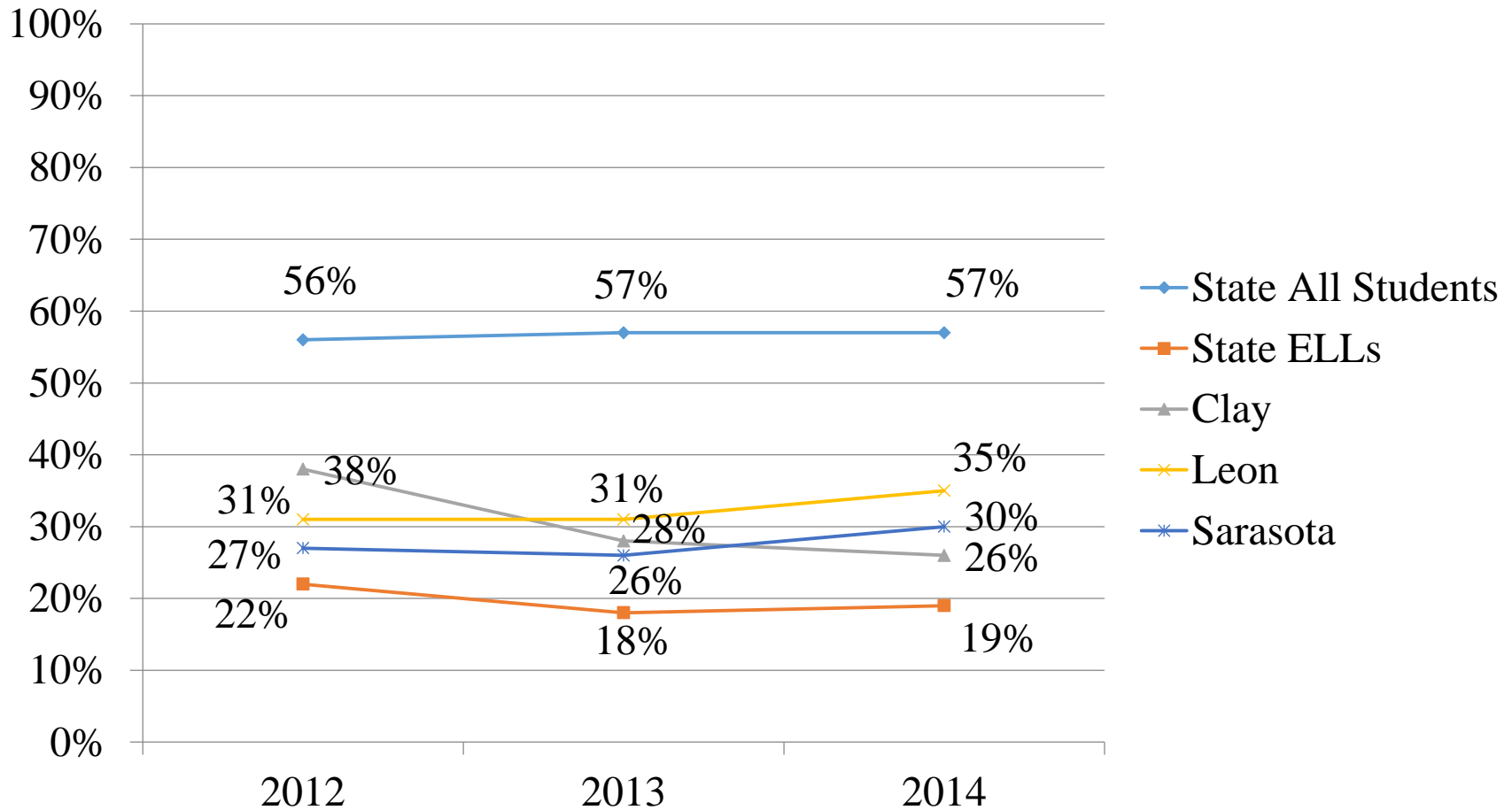
What accommodations
and instructional
practices do we expect
to see when observing
classrooms with
ELLs?

Accommodations and Instructional Practices for English Language Learners (ELLs) for Classroom Observation

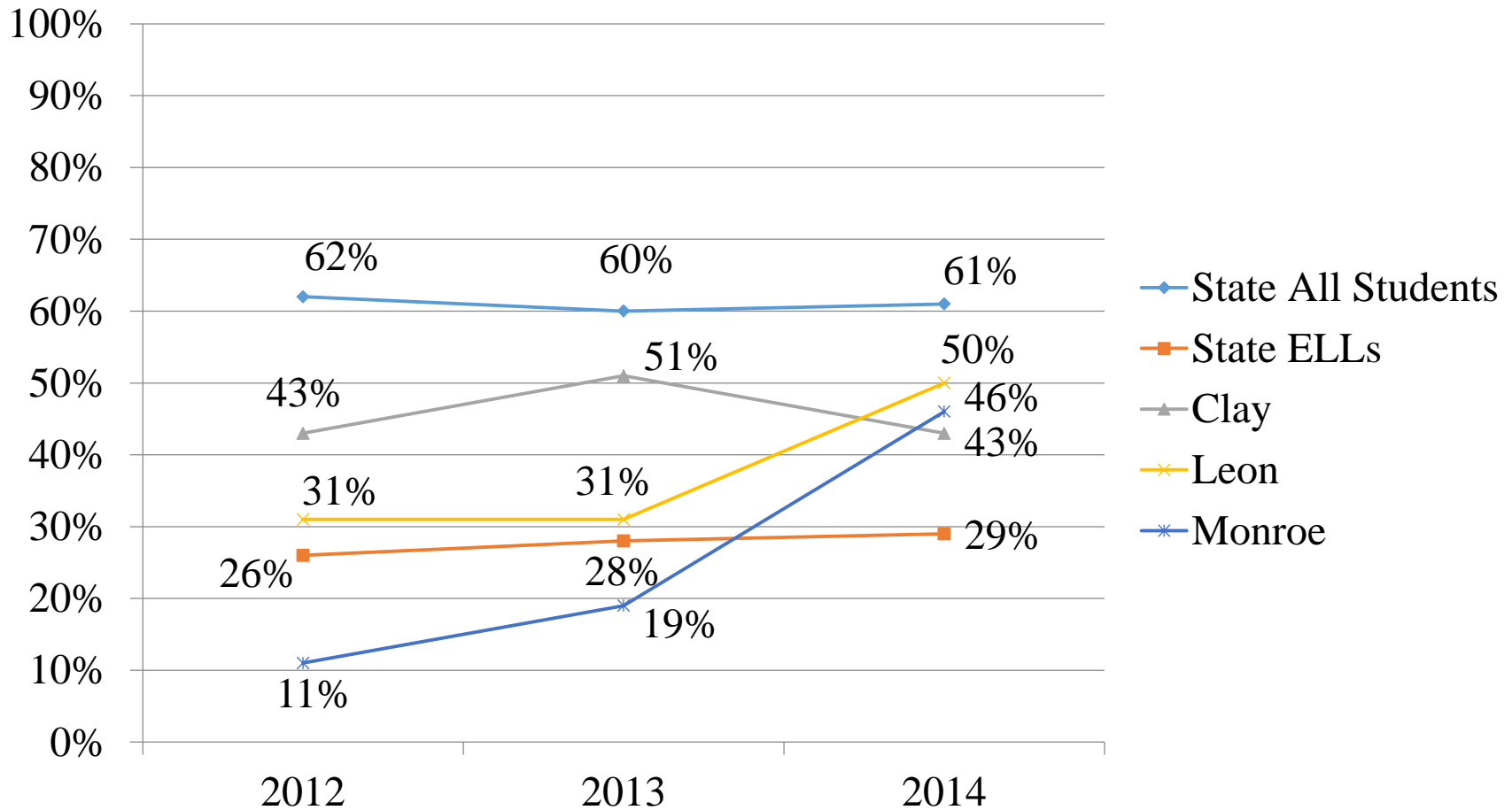
- Evidence of Bilingual Dictionary
- Evidence of Extended Time
- Evidence of Flexible Setting
- Evidence of Bilingual Support for Lowest-Level ELLs
- Evidence of ELL Engagement in Lesson
- Evidence of ELL Consideration in Lesson Plans
- Evidence of English Language Development Standards in Lesson Plans
- Evidence of Teacher Awareness of ELL Levels of Students

What does our ELL performance on statewide assessments look like?

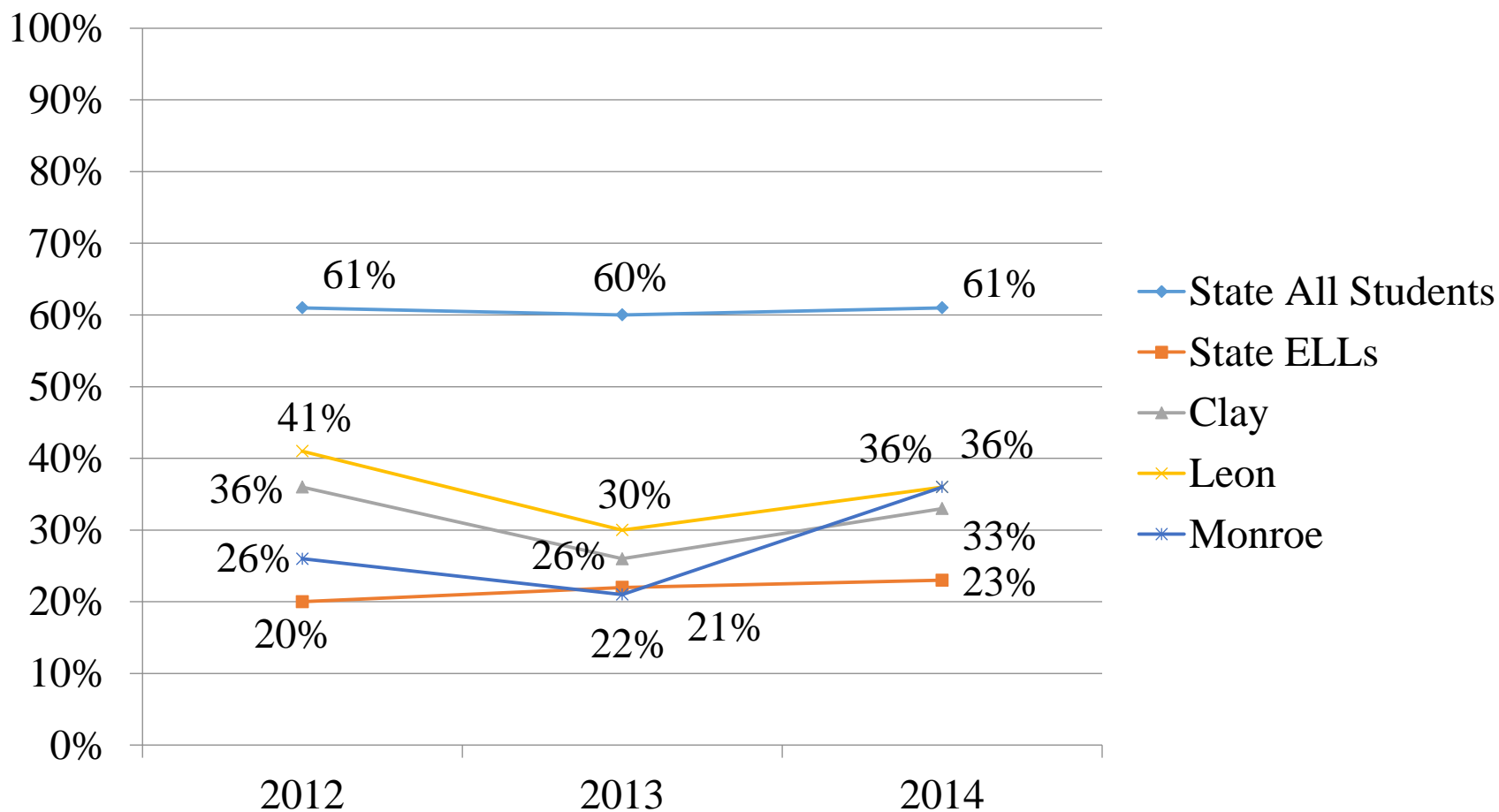
Reading Grade 3



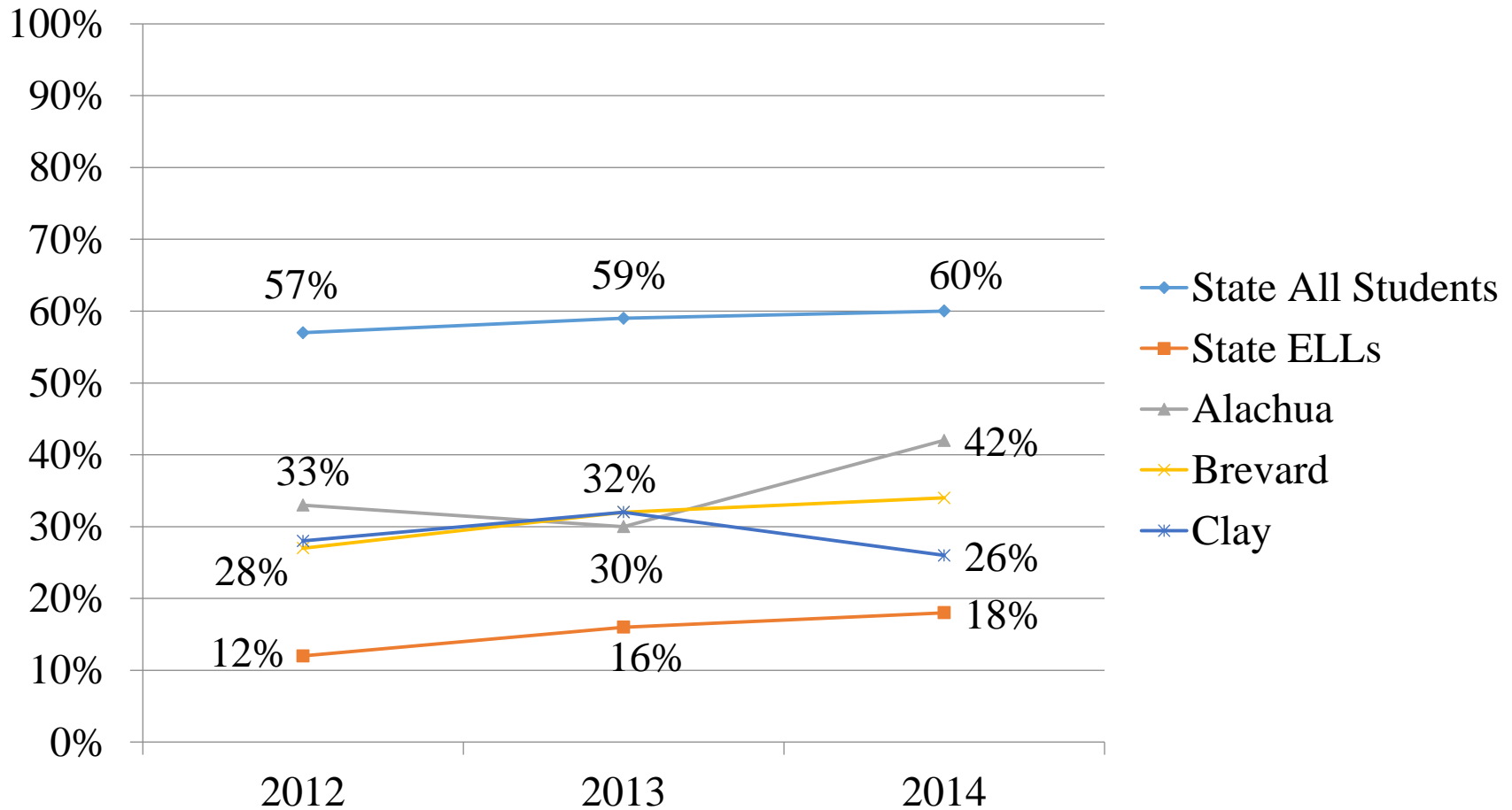
Reading Grade 4



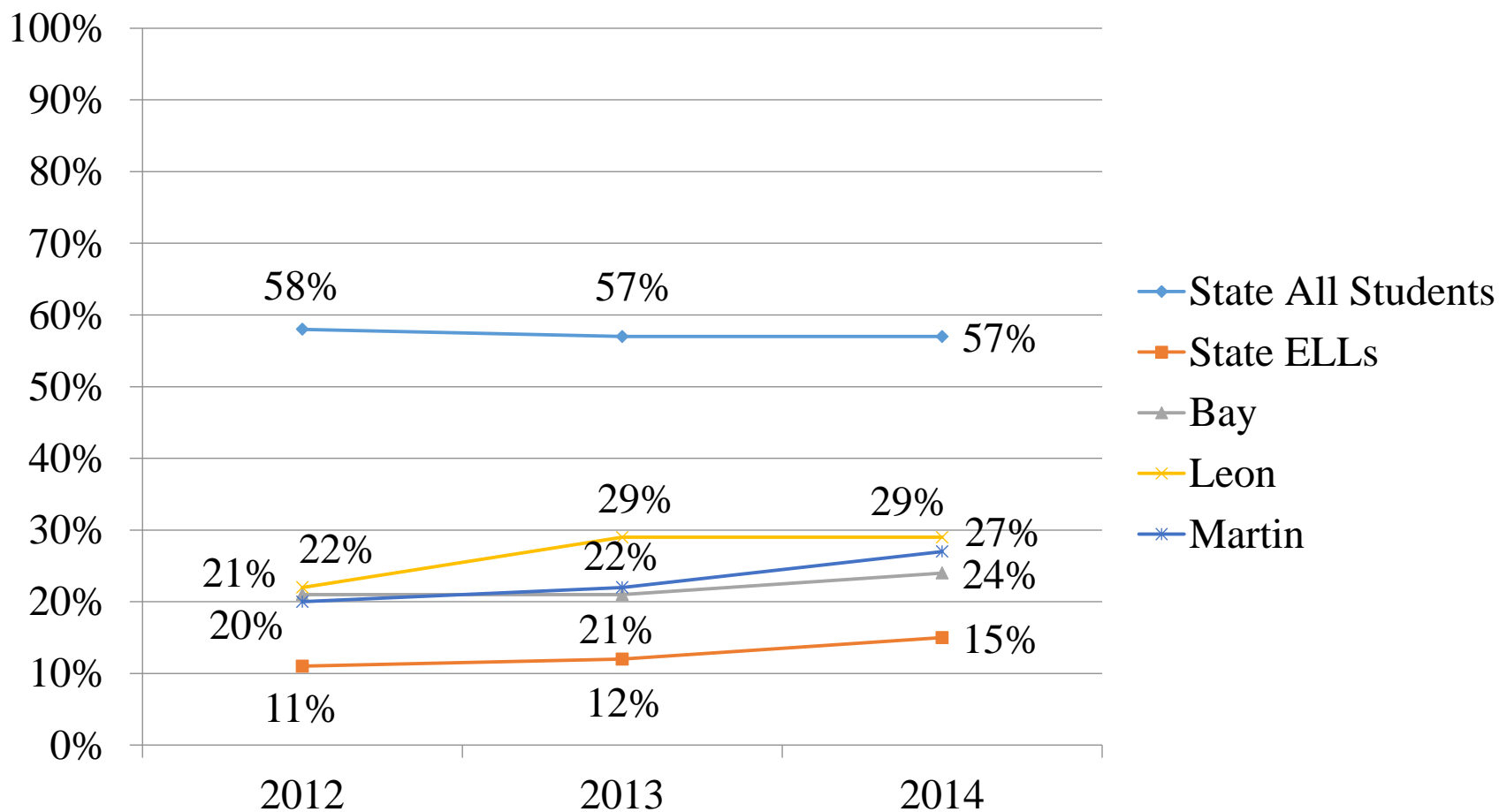
Reading Grade 5



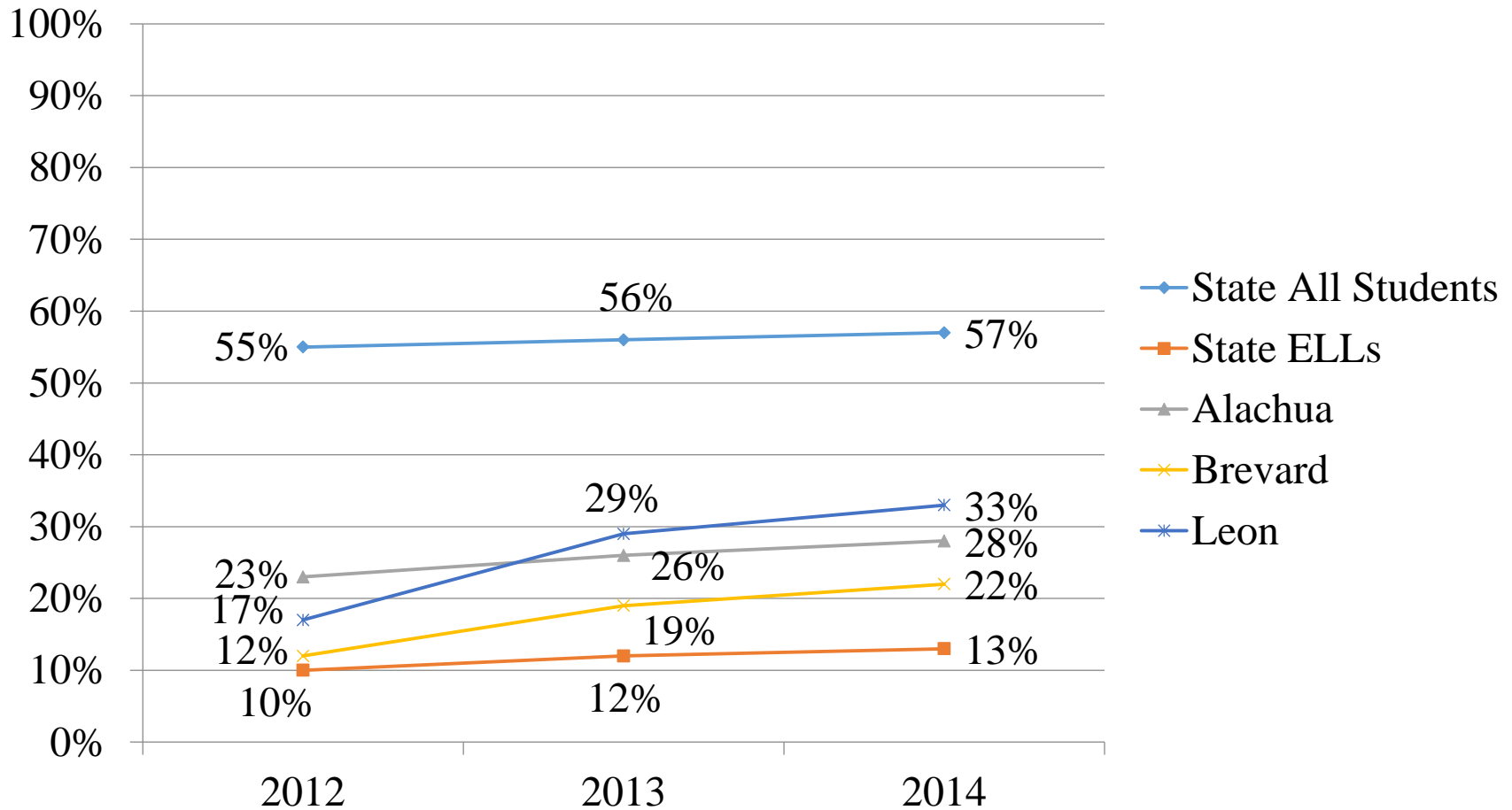
Reading Grade 6



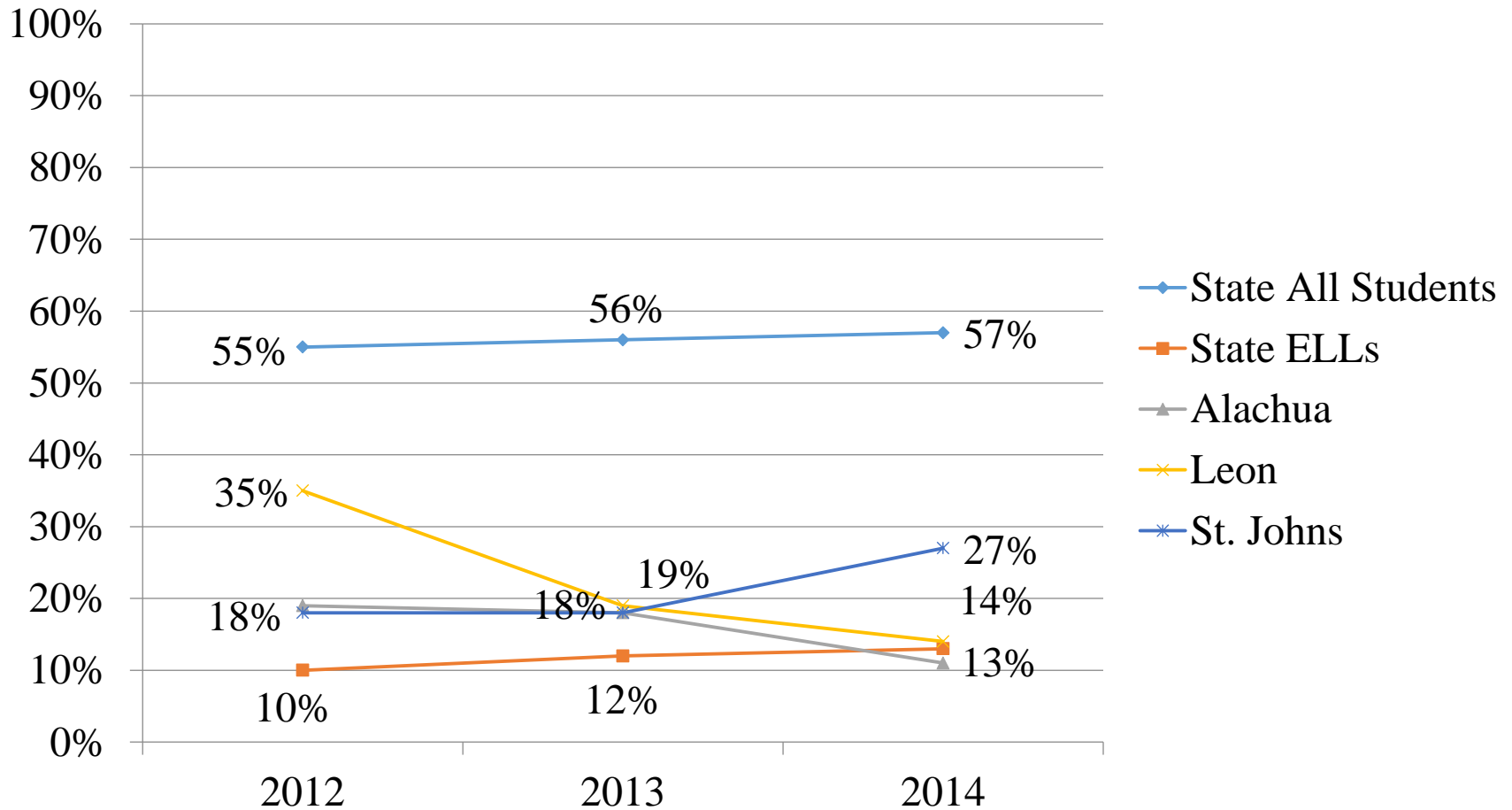
Reading Grade 7



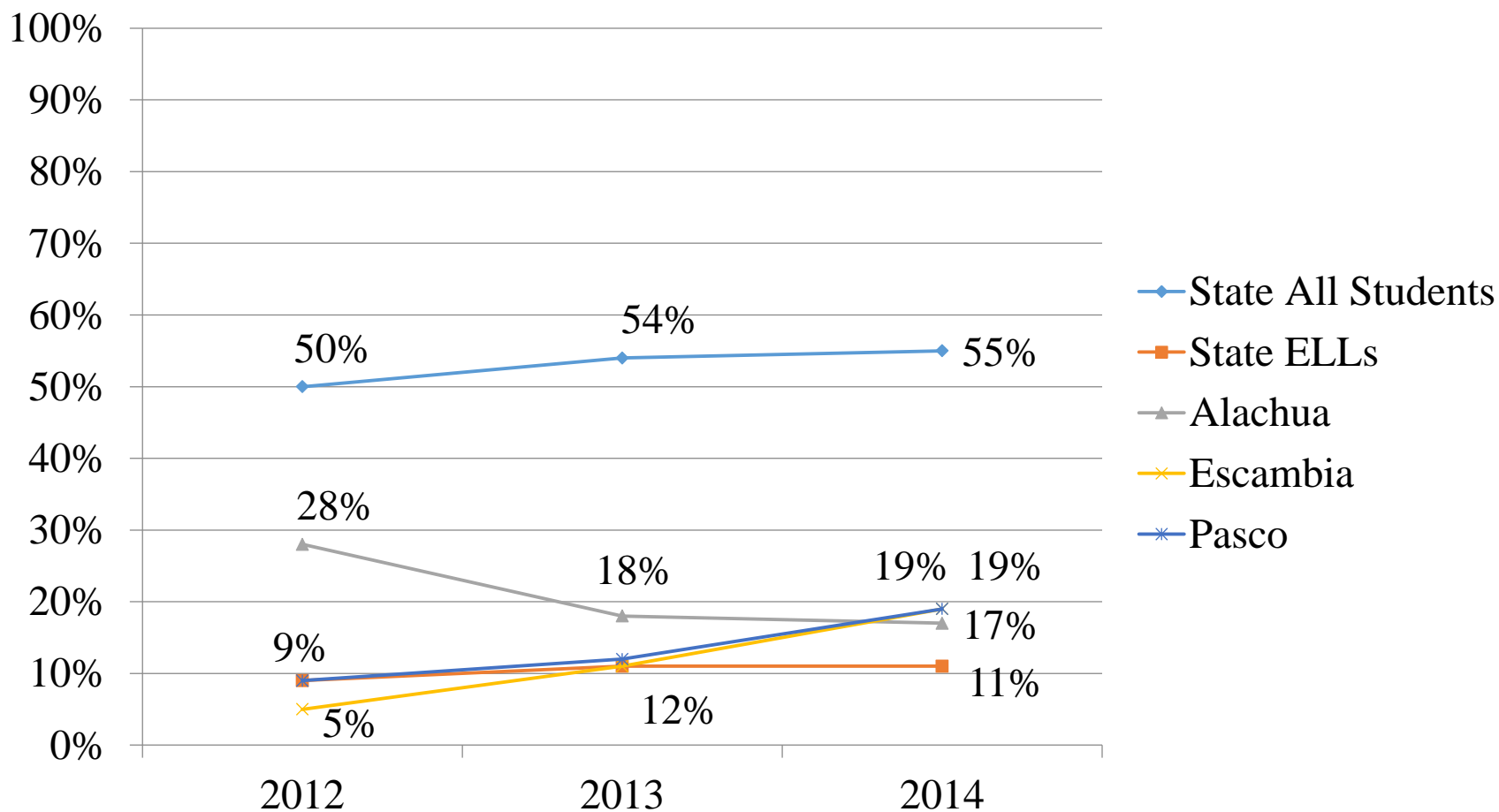
Reading Grade 8



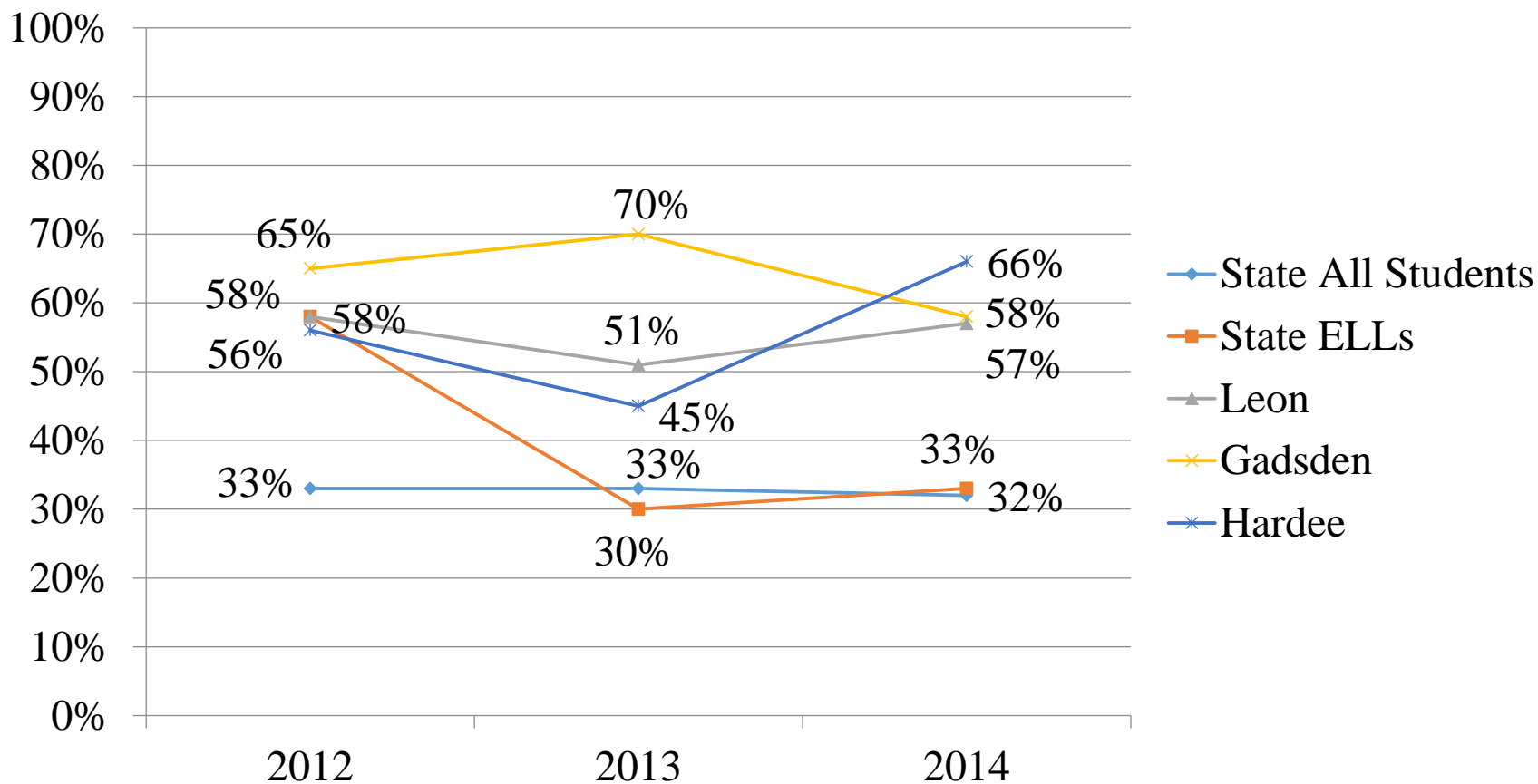
Reading Grade 9



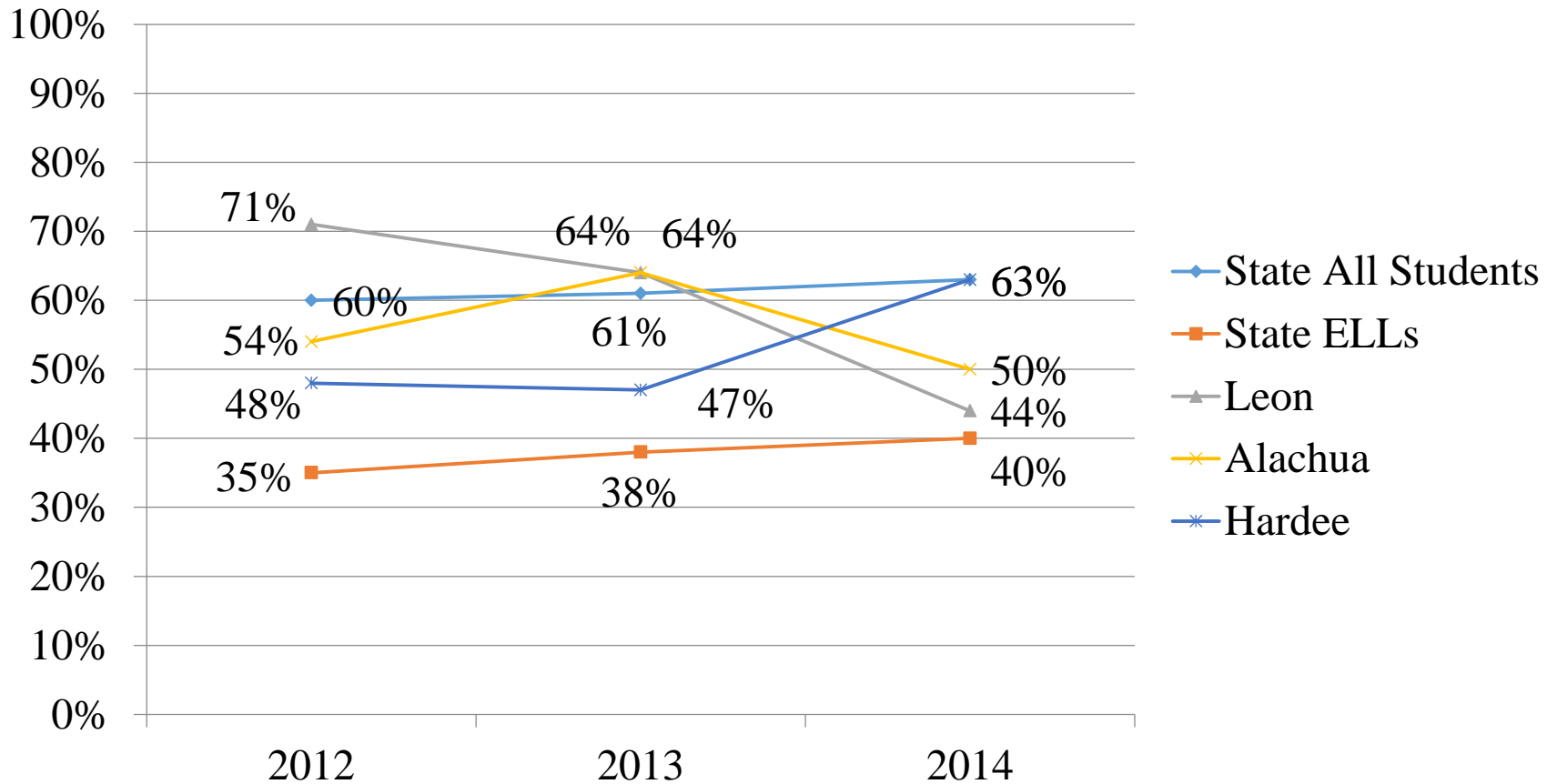
Reading Grade 10



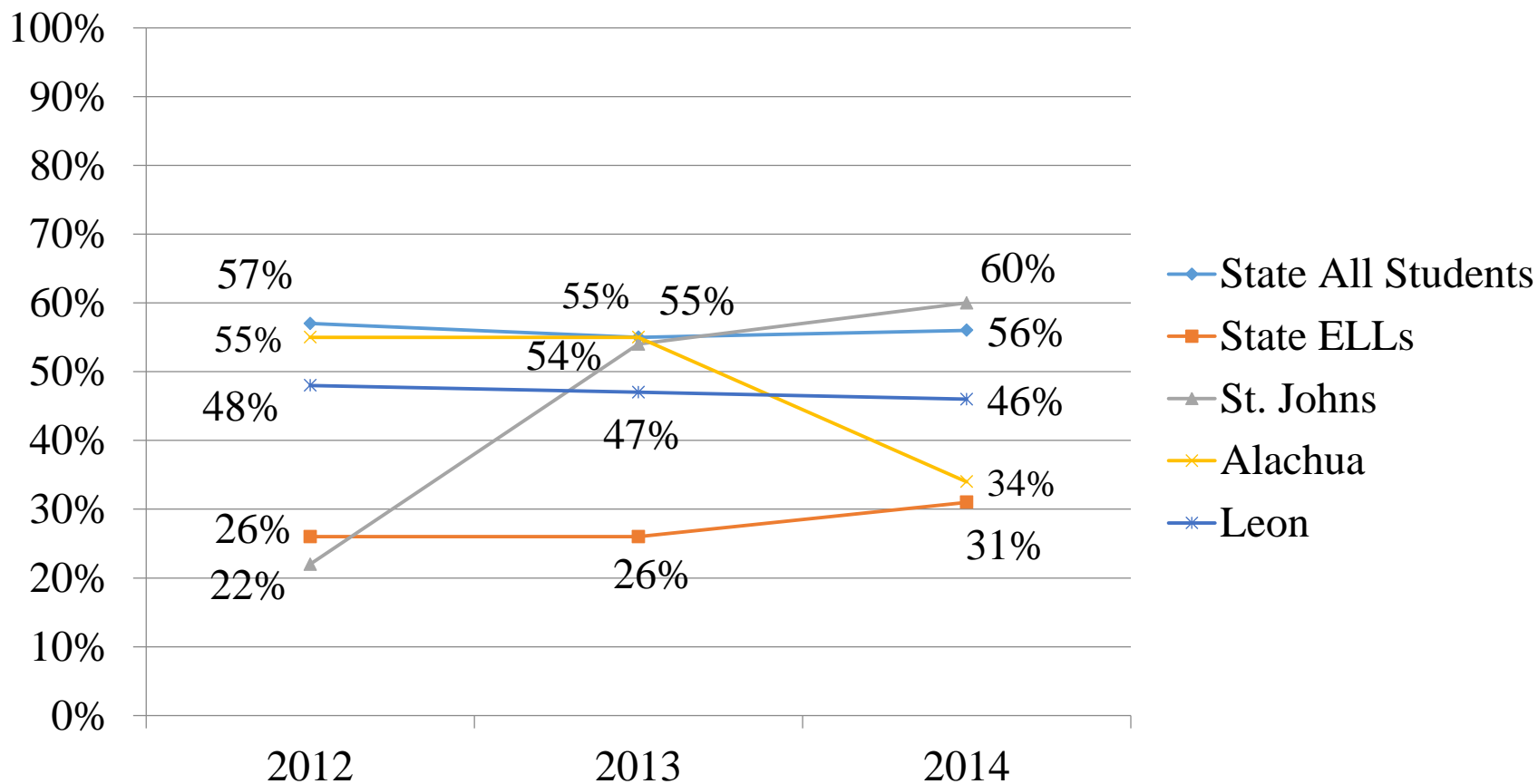
Math Grade 3



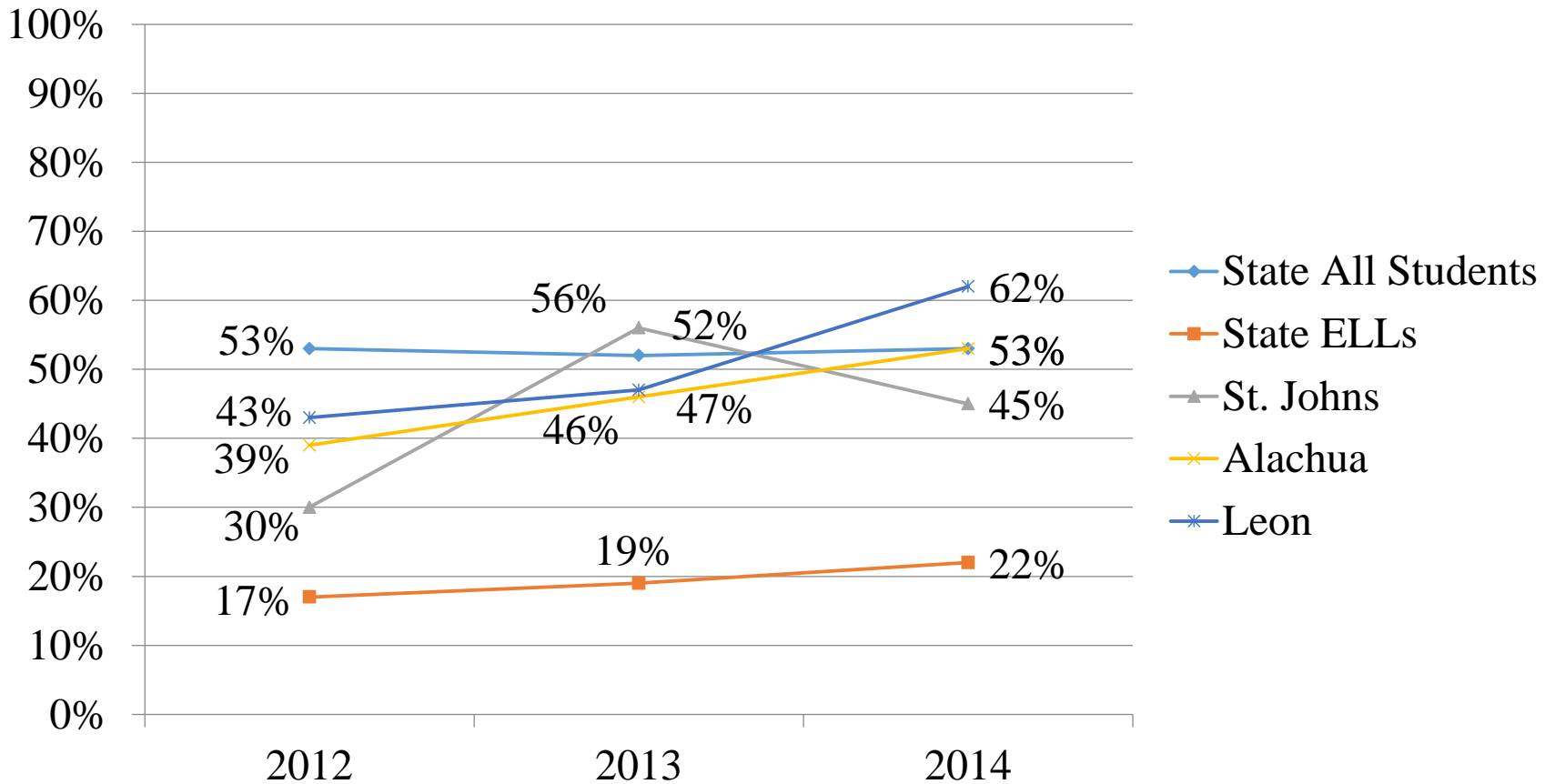
Math Grade 4



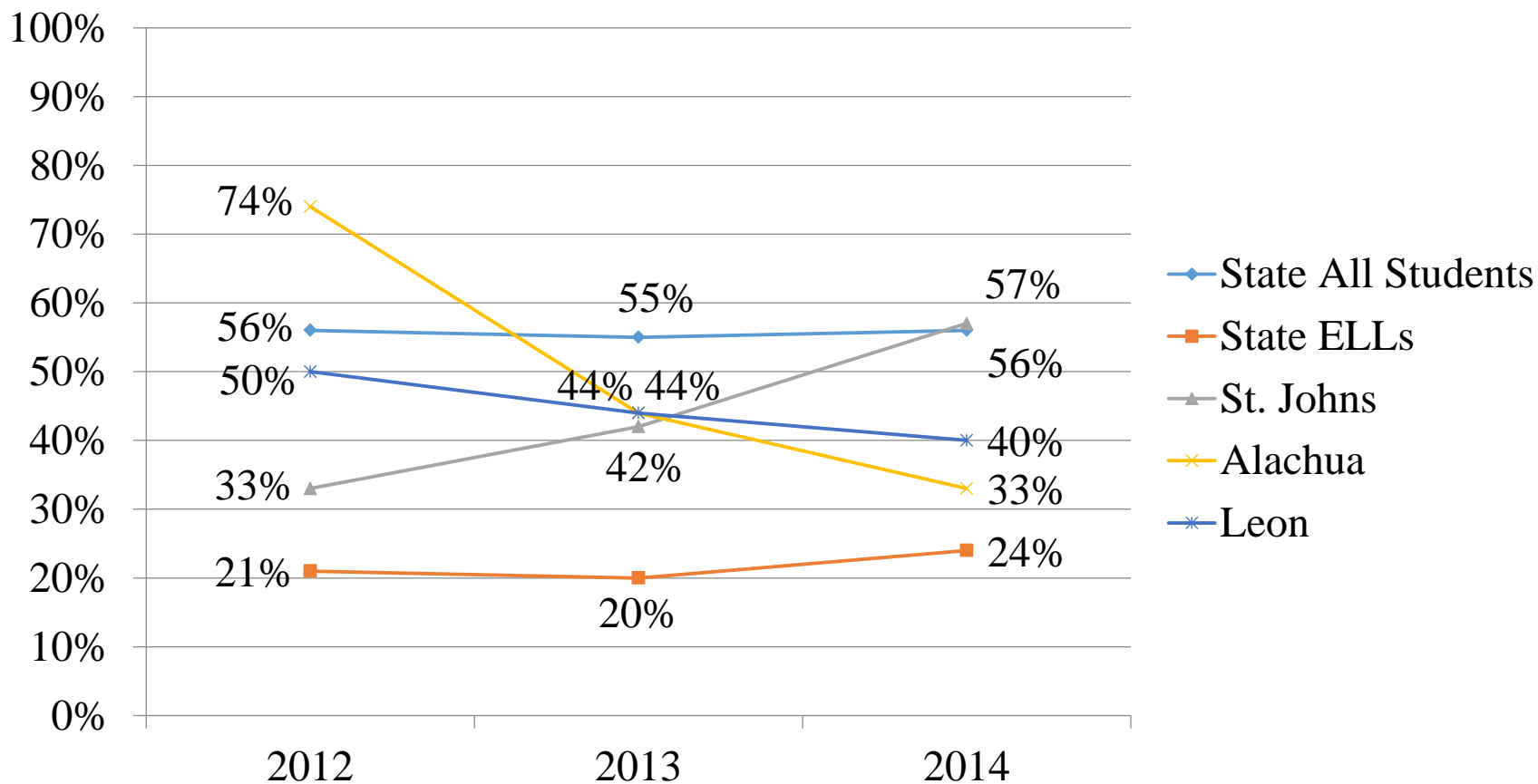
Math Grade 5



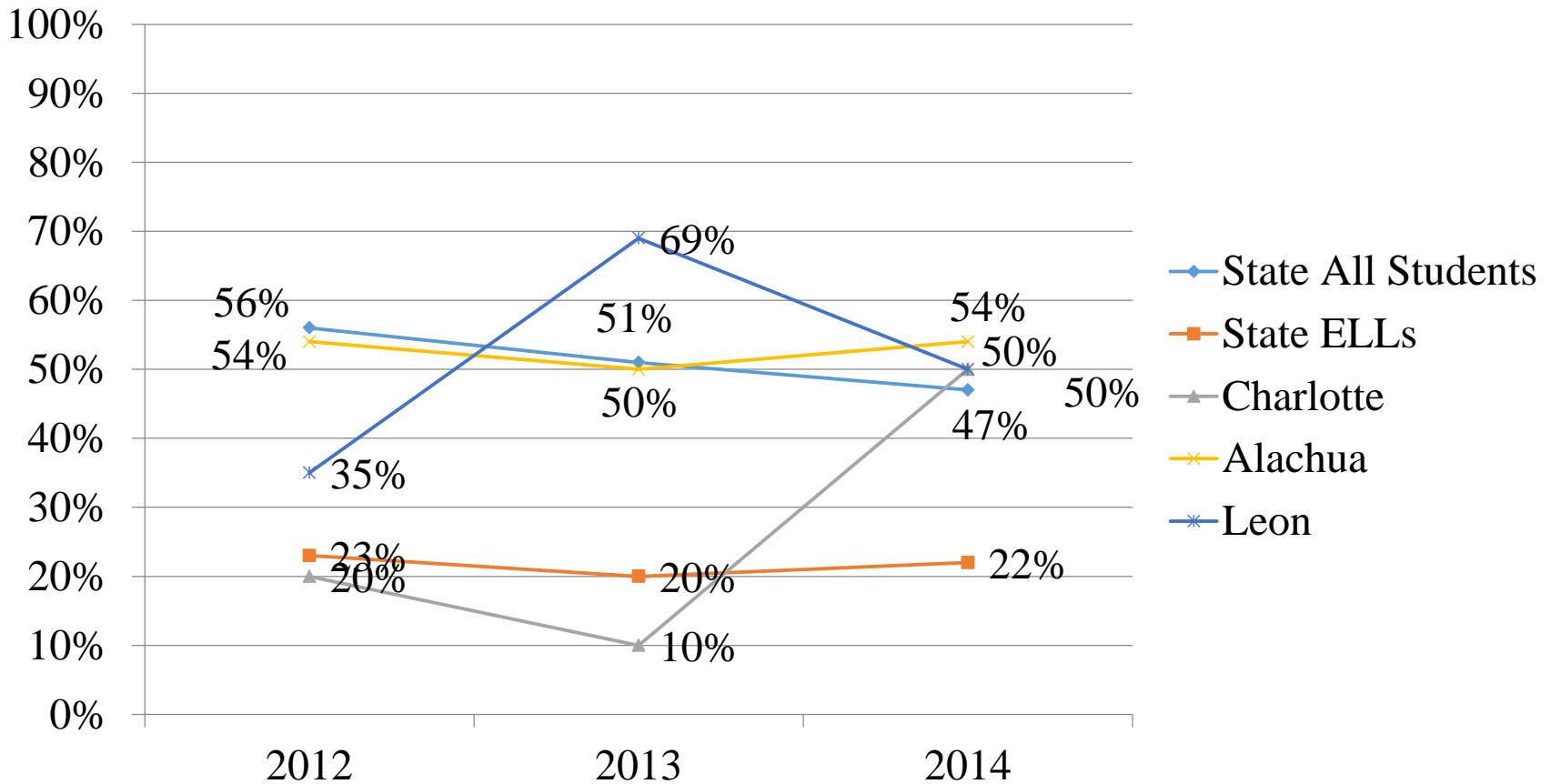
Math Grade 6



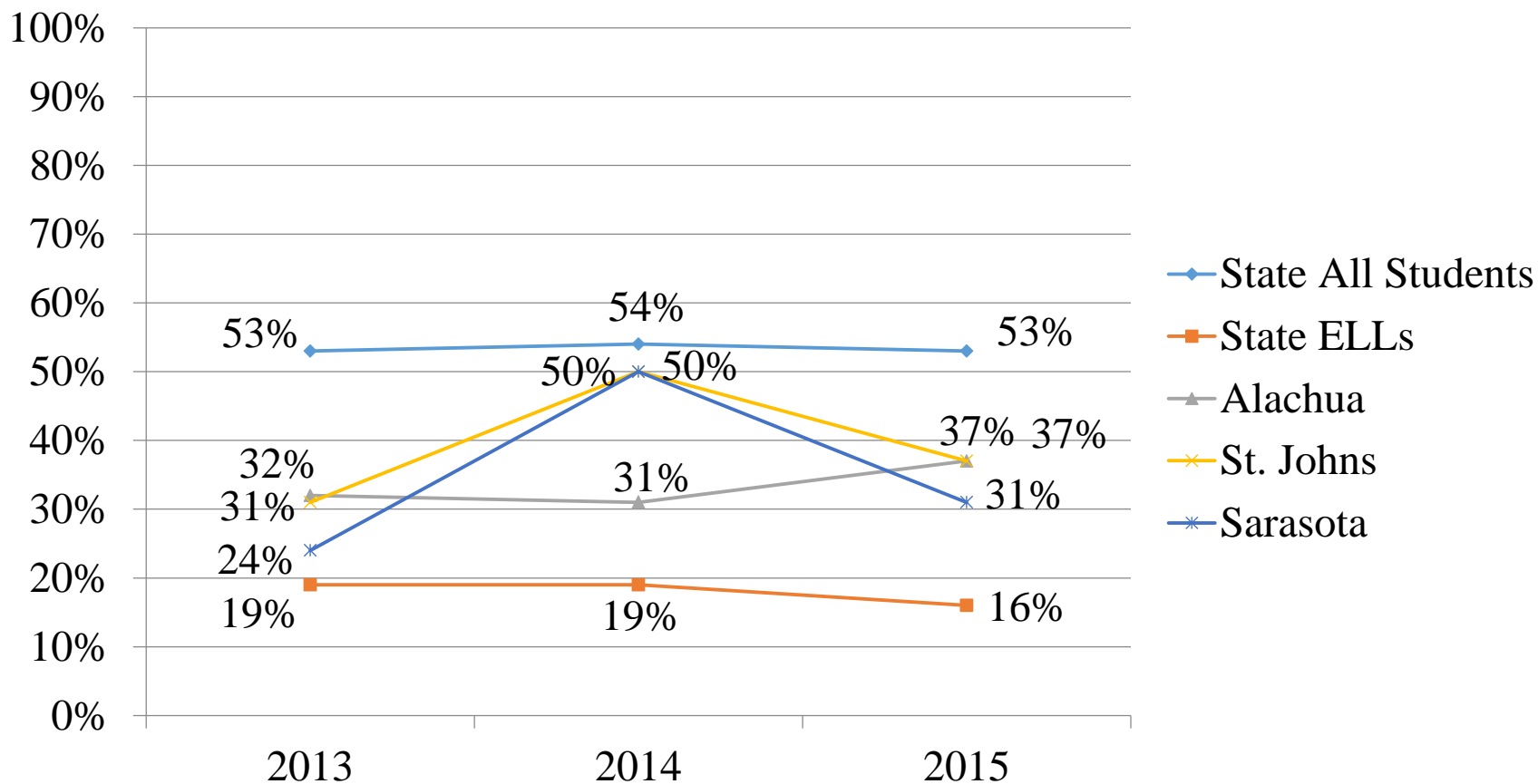
Math Grade 7



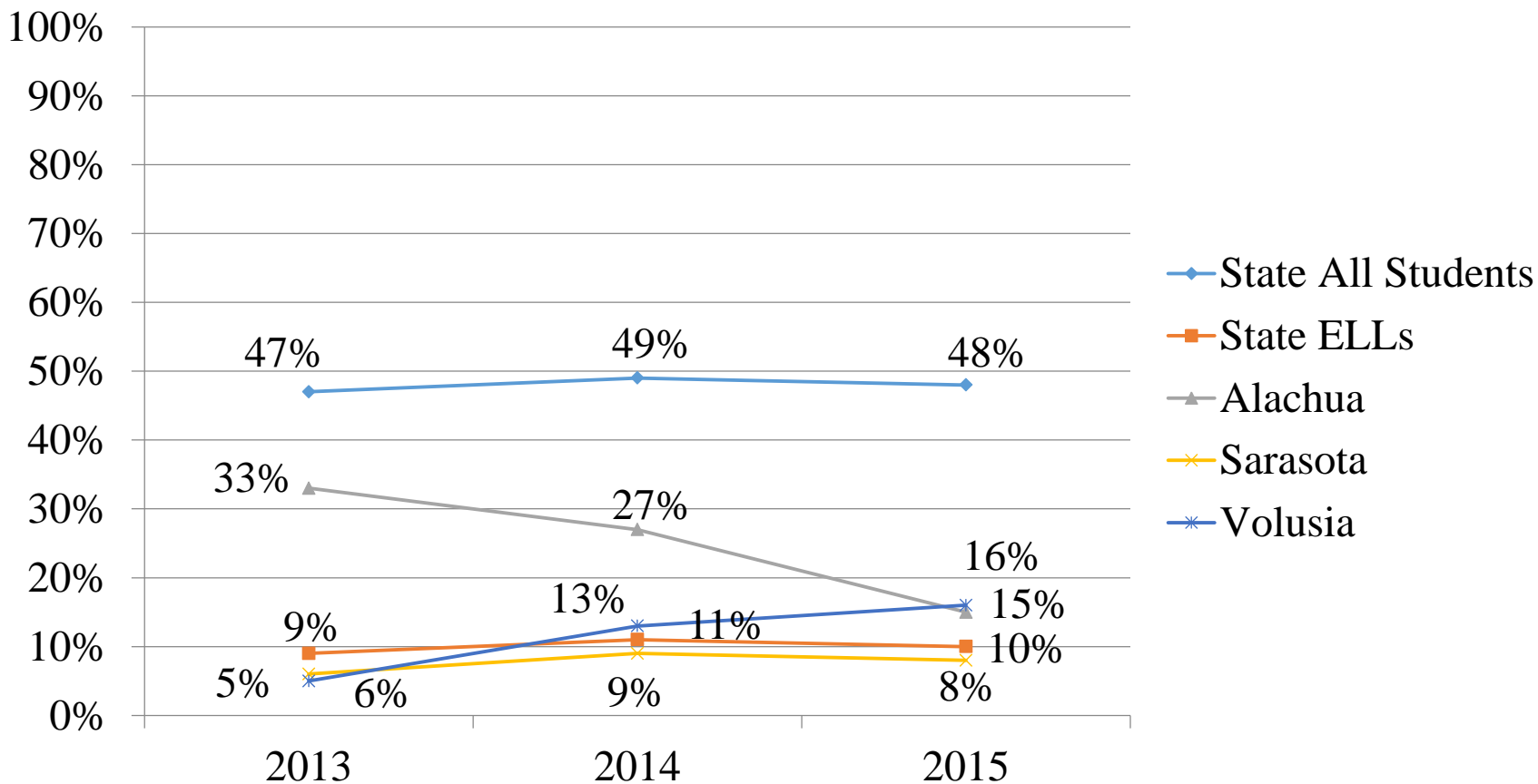
Math Grade 8



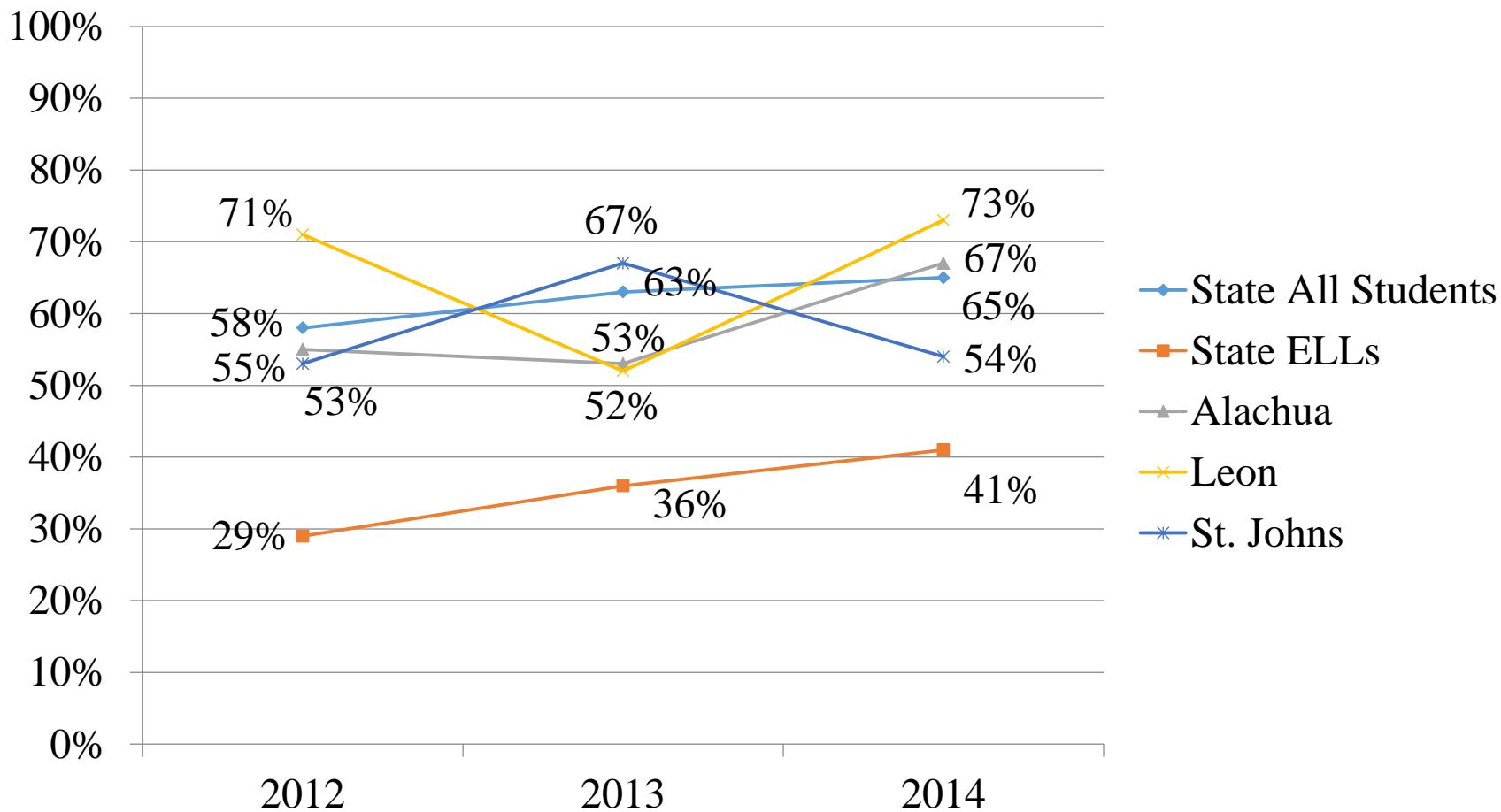
Science Grade 5



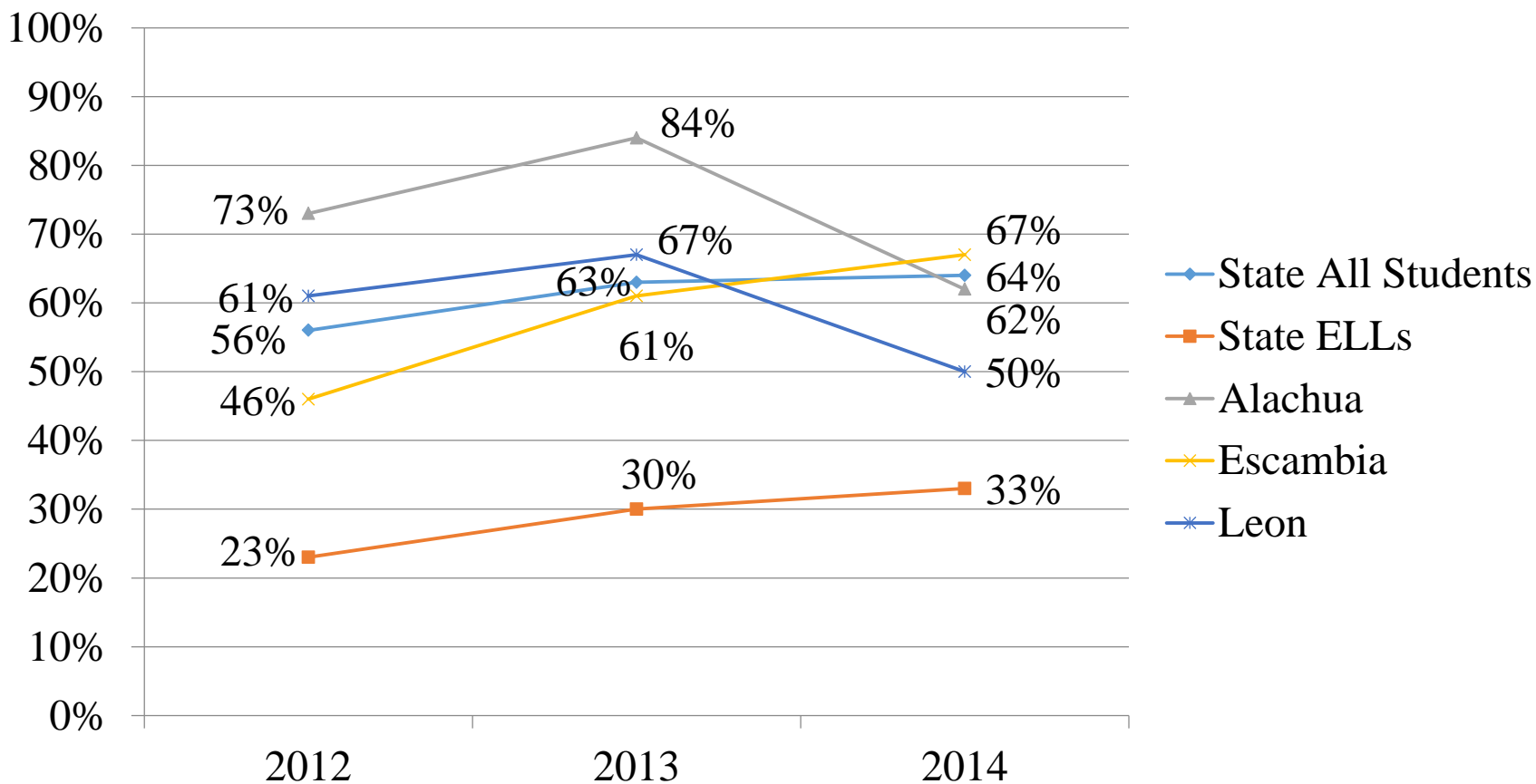
Science Grade 8



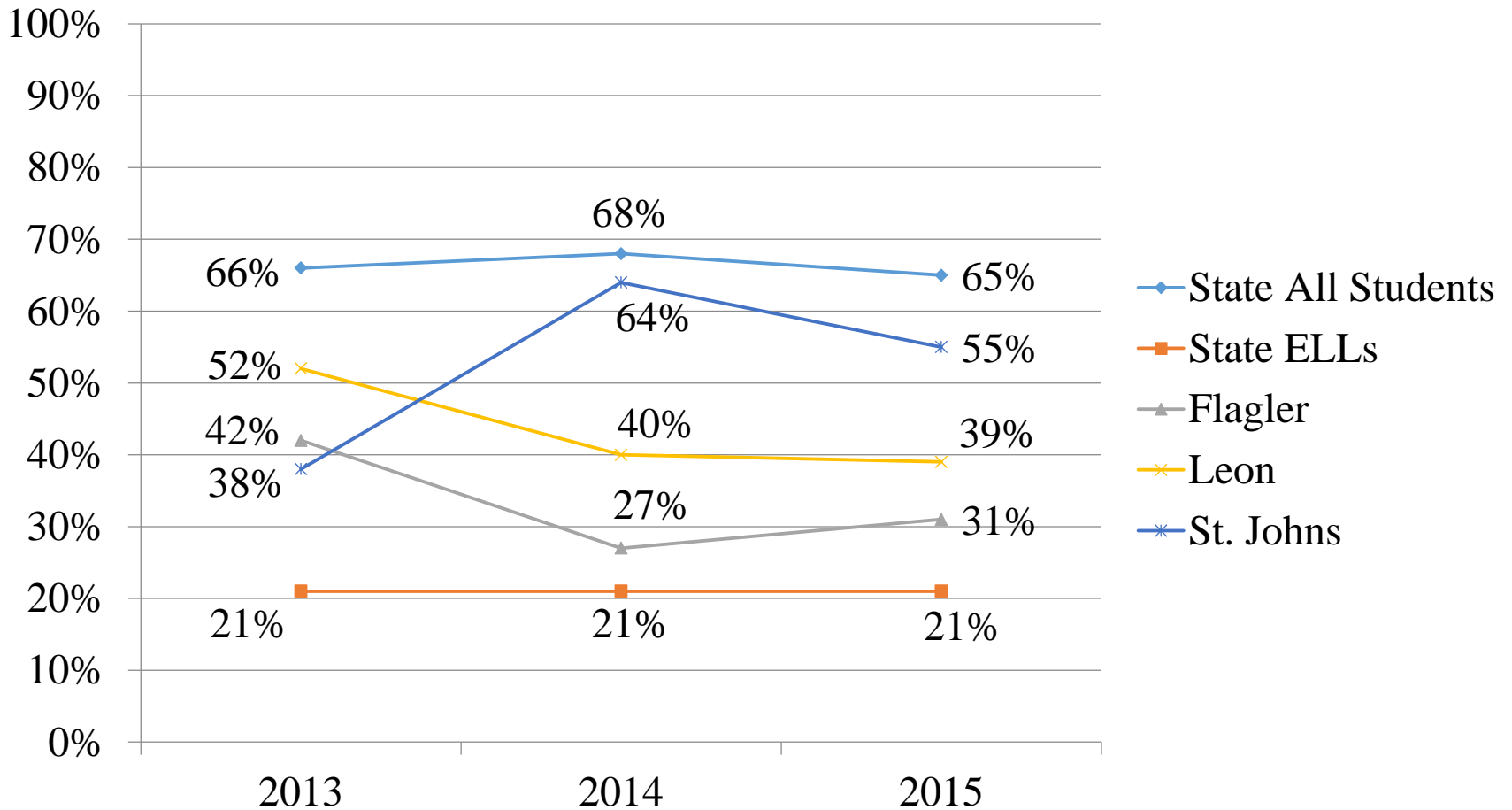
Algebra I EOC



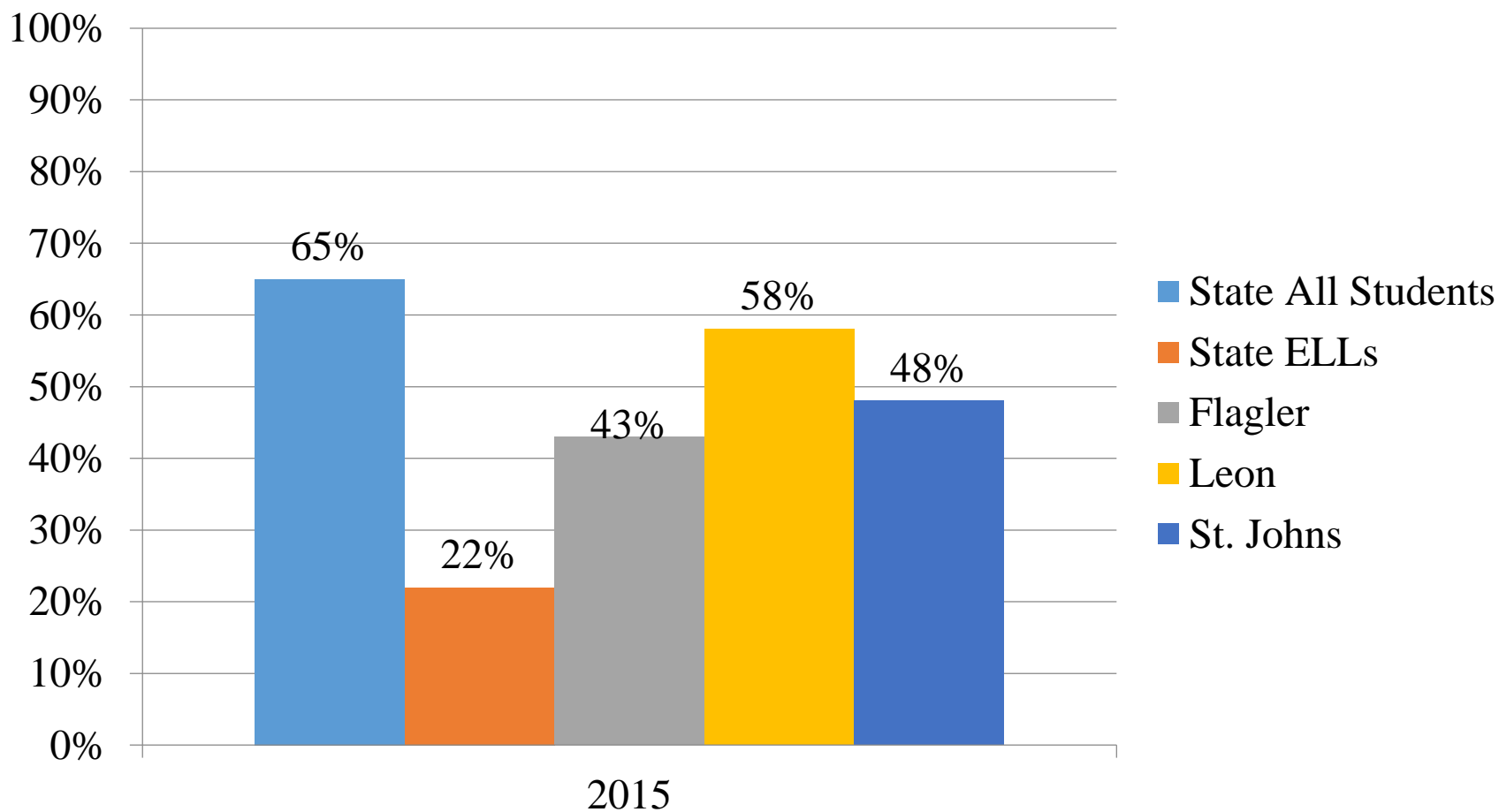
Geometry I EOC



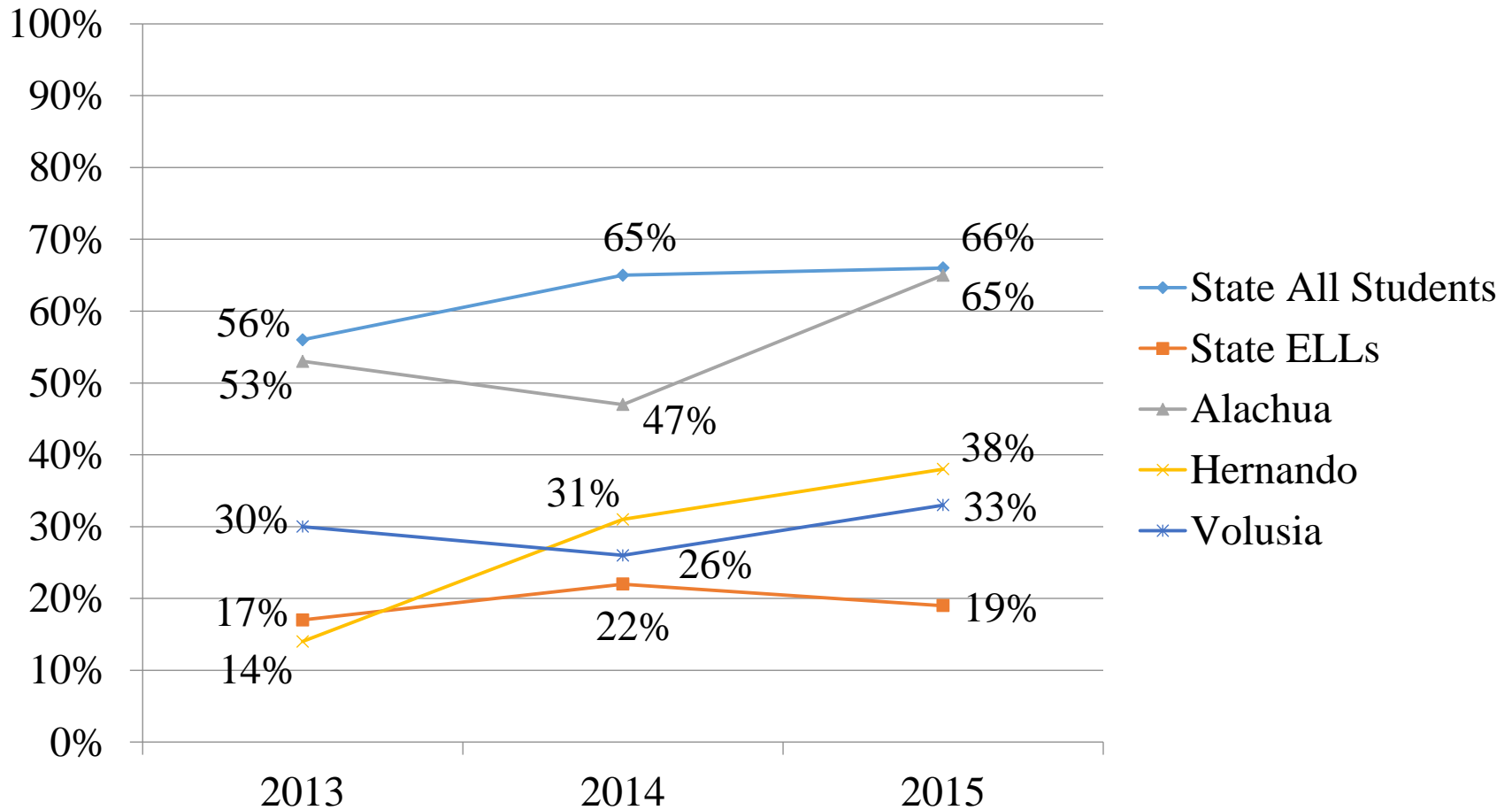
Biology I EOC



Civics EOC



United States History EOC



What does our ELL
performance on
Annual Measurable
Achievement
Objectives (AMAOs)
look like?

Annual Measurable Achievement Objectives (AMAOs) 2014

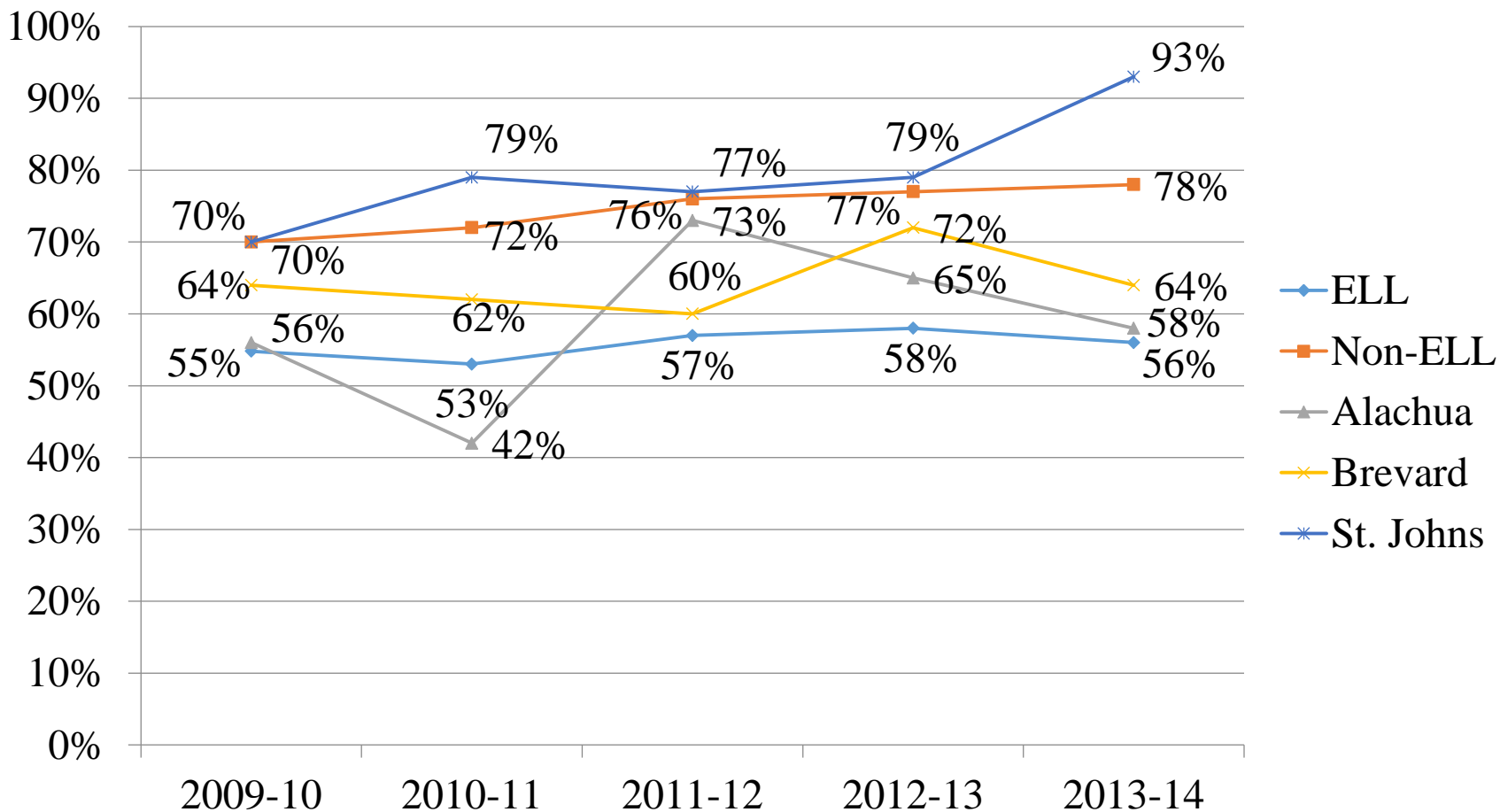
- **Districts Making AMAO 1 – Percent Making Progress in English Language Acquisition**
 - Alachua, Bay, Gilchrist, Glades, Nassau, Osceola, Santa Rosa, Sarasota, Seminole, Sumter and FAU Lab
- **Districts Making AMAO 2 – Percent Proficient in English**
 - Alachua, Bay, Clay, Columbia, Gilchrist, Hernando, Leon, St. Johns, Santa Rosa, Sarasota, Seminole and FAU Lab
- **Districts Making AMAO 3 – Attainment of Academic Content Standards**
 - Gilchrist, St. Johns, Santa Rosa, Walton and FSU Lab

Annual Measurable Achievement Objectives (AMAOs) 2014 (cont'd)

- Districts Making AMAOs 1, 2 and 3
 - Gilchrist and Santa Rosa
- Web: <http://www.fldoe.org/aala/amao.asp>

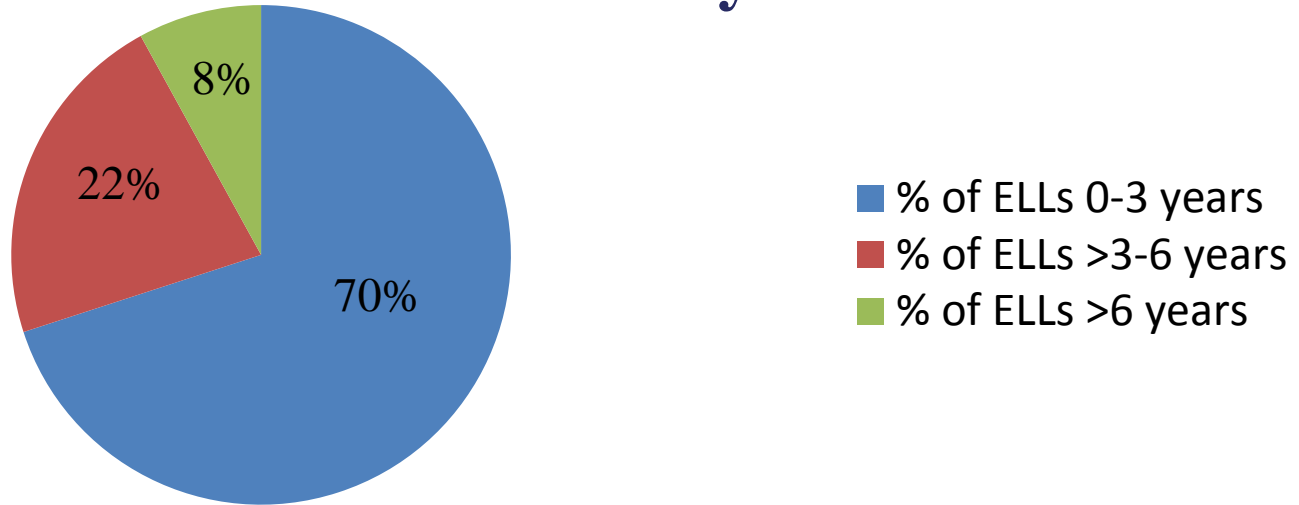
What does our ELL
graduation rate look
like?

High School Graduation Rates



How long are our ELLs in the English for Speakers of Other Languages (ESOL) Program?

ELL Time in the Florida ESOL Program based on ELL Entry Date



- Texas study links shorter time in ESOL programs to higher ELL matriculation to college:
<http://www.migrationpolicy.org/pubs/TexasELLs.pdf>
- State average for longer than 6 years in the ESOL program is 8%
- 28 districts are above the state average for longer than 6 years in the ESOL program
- 15 districts report no ELLs longer than 6 years in the ESOL program
- 36 districts report ELLs longer than 10 years in the ESOL program

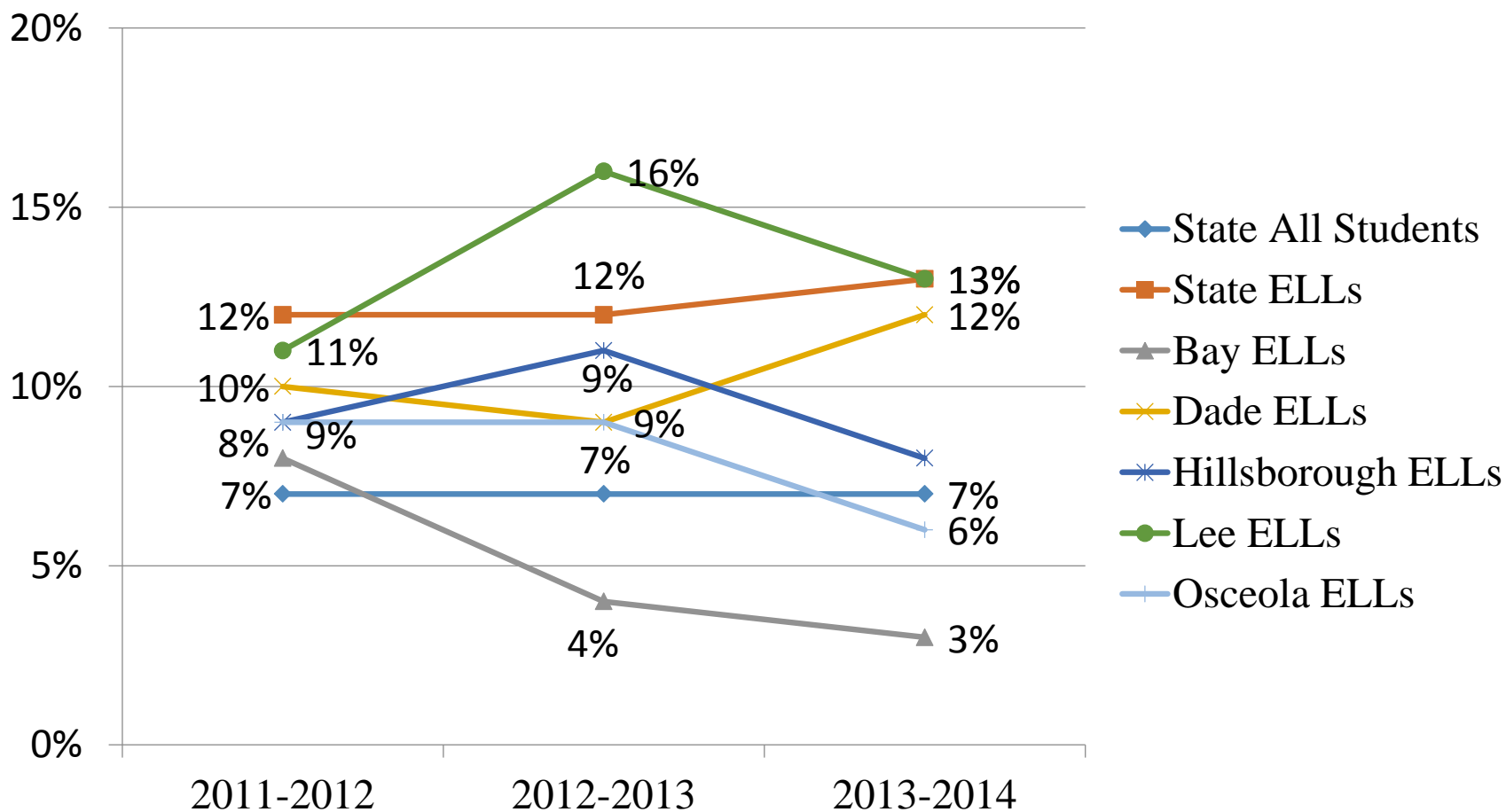
How many of our
ELLs are enrolled in
advanced courses?

Course Enrollment Patterns – Districts Enrolling ELLs at High Percentages in Advanced Classes

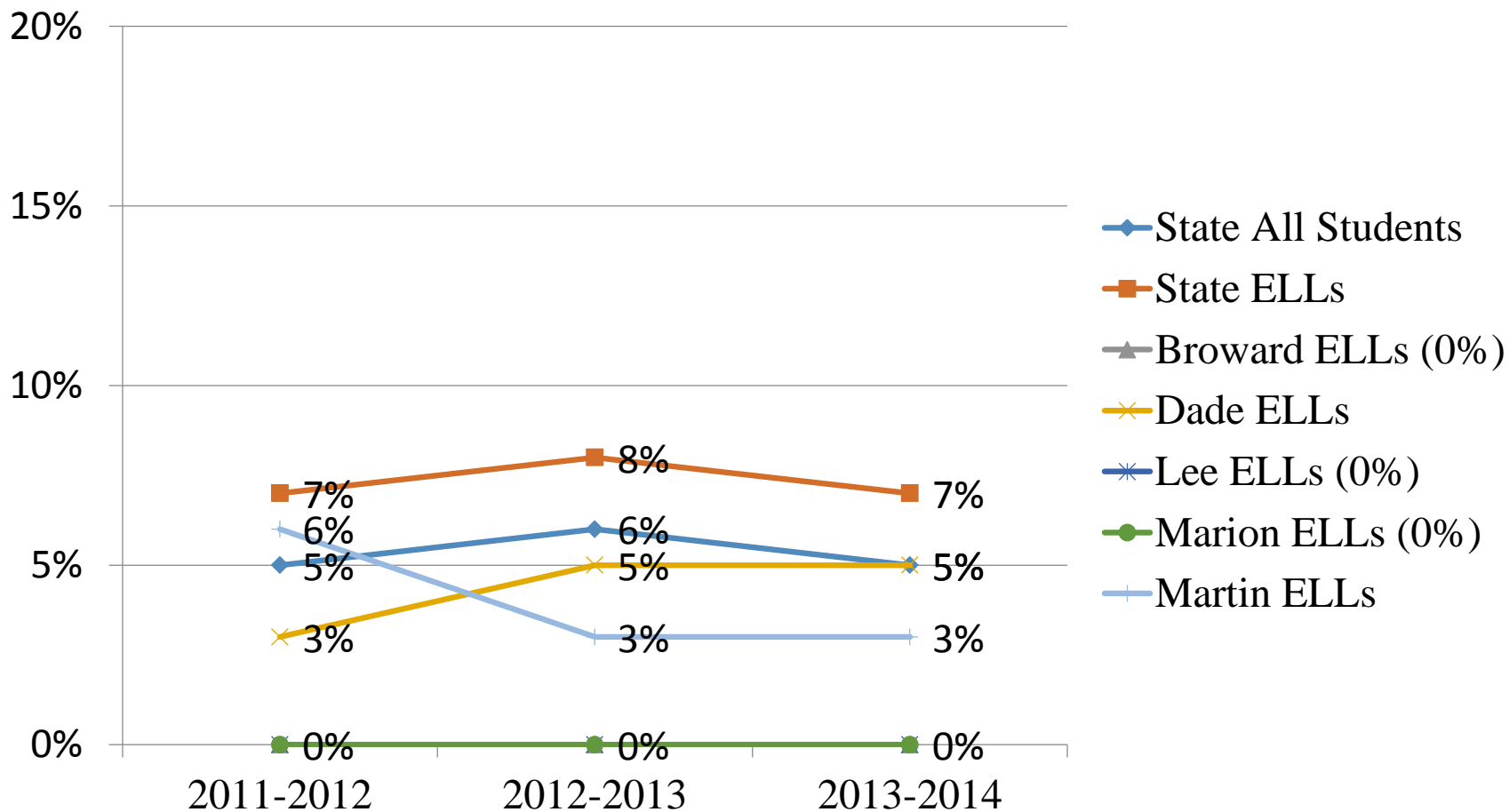
- Advanced Placement Biology
 - Clay, Lake and Leon
- Advanced Placement English Composition
 - Hernando and St. Johns
- Advanced Placement United States History
 - Pasco
- English Honors 3
 - Alachua
- Pre-Calculus Honors
 - Alachua, Citrus, Pasco, Sumter and Suwannee
- Spanish 3 Honors
 - Duval, Hillsborough and Orange
- Computing for College and Careers
 - Broward, Hernando, Monroe and Seminole

How many of our
ELLs are not
promoted in grades 3
and 10?

Grade 3 Non-Promotion



Grade 10 Non-Promotion



What information is
available on our new
English language
proficiency
assessment?

Assessing Comprehension and Communication in English State-to-State for English Language Learners 2.0 (ACCESS for ELLs 2.0)

Florida will administer the ACCESS for ELLs 2.0 assessments as a tool to measure English Language Learners (ELLs) proficiency in English; thus, ensuring the skills needed in school to achieve at high levels, academically. ACCESS for ELLs 2.0 is a large-scale test of English language proficiency based on the WIDA English Language Development (ELD) standards adopted by Florida in June 2014.

For the 2015 – 2016 school year, the following assessments are used to satisfy state and federal requirements for the annual assessment of the English language proficiency of English language learners:

- **Kindergarten ACCESS for ELLs**, a paper-based assessment for Kindergarten
- **ACCESS for ELLs 2.0 Paper**, a paper-based assessment for Grades 1–12
- **Alternate ACCESS for ELLs**, a paper-based assessment for students in Grades 1–12 who have significant cognitive disabilities

Important Resources

Florida's WIDA webpage: <https://www.wida.us/membership/states/Florida.aspx>

- The purpose of this website is to provide Florida-specific information regarding the administration of ACCESS for ELLs 2.0.

WIDA Secure Portal: www.wida.us/login.aspx

- The purpose of this portal is to provide online training modules and certification to district and school personnel for ACCESS for ELLs 2.0.

WIDA Assessment Management System (WIDA AMS): www.wida-ams.us

- The purpose of this online administrative portal is to order test materials, edit student demographic information and accommodations, and download the Spring 2016 ACCESS for ELLs 2.0 Score Reports.

Students to be Tested

All students enrolled in the district (grades K-12) and classified ELL, with a code of “LY” on the 1st day of the test administration window, must be administered ACCESS for ELLs 2.0.

Students with disabilities participate in the statewide assessment program by taking one of the following:

- ACCESS for ELLs 2.0 without accommodations,
- ACCESS for ELLs 2.0 with accommodations, or
- Alternate ACCESS for ELLs

Important: All determinations regarding participation and accommodations in the statewide assessment program must be documented in the student’s IEP or Section 504 Plan, and the student’s ELL Plan.

2016 ACCESS for ELLs 2.0 Schedule

Event	Date
Delivery of 2016 Administration Materials	January 15, 2016
2016 ACCESS for ELLs 2.0 Test Administration Window	February 8, 2016 – March 25, 2016
Return of Materials	February 9, 2016 – April 1, 2016
Pre-Reporting Data Validation Window	April 20, 2016 – April 26, 2016
Delivery of 2016 ACCESS for ELLs 2.0 Score Reports	May 20, 2016
Post-Reporting Data Validation Window	May 23, 2016 – June 3, 2016
Final Data Available to State	June 13, 2016
Bridge Study (conducted by Center for Applied Linguistics)	June 14, 2016 – September 30, 2016
Standard Setting	October 2016

Test Overview

- **Kindergarten ACCESS for ELLs** is an individually administered, adaptive assessment designed to take an average of 45 minutes per student.
 - The Test Administrator scores all sections, including the Writing test, on site.
- **ACCESS for ELLs 2.0 Paper** is available in three tiered forms within a grade-level cluster. Tier refers to the form of the test administered that roughly corresponds to a student's position along the second language continuum: Tier A (Beginning); Tier B (Intermediate); or Tier C (Advanced).
 - Grade-Level Clusters: 1, 2, 3, 4–5, 6–8, 9–12
 - The Speaking section is individually administered and scored by the Test Administrator.
 - The Listening, Reading, and Writing sections can be group-administered.
- **Alternate ACCESS for ELLs** is an individually administered, semi-adaptive assessment.
 - Grade-Level Clusters: 1–2, 3–5, 6–8, 9–12
 - The Test Administrator scores all sections.

Training and Certification Requirements for Test Administrators via WIDA Secure Portal

WIDA requires that all Test Administrators score 80% or higher on the appropriate quiz to become a certified Test Administrator. For some educators, one or more quizzes are required.

- **Kindergarten ACCESS for ELLs:** Kindergarten Training Module and take the Kindergarten quiz
- **ACCESS for ELLs 2.0 Paper:** Speaking Assessment Scoring Module and take the appropriate quiz
 - There are five Speaking Assessment Scoring Modules that cover the grade-level clusters (Grade 1, 2–3, 4–5, 6–8, 9–12), which takes approximately 90 minutes to complete all modules. These modules provide sample student responses for Test Administrators to practice scoring.
 - The Speaking Quiz is provided in two grade-level clusters (Grades 1–5 or 6–12).
 - **Note:** If a Test Administrator is not administering the Speaking section, the Speaking quiz is not required.
- **Alternate ACCESS for ELLs:** Alternate ACCESS for ELLs Training Module and take the Alternate ACCESS for ELLs quiz

2016 ACCESS for ELLs 2.0 Regional Training Sessions

Location	Assessment(s)	Date
Tallahassee	Kindergarten ACCESS for ELLs ACCESS for ELLs 2.0 Paper	December 14, 2015
Gainesville	Kindergarten ACCESS for ELLs ACCESS for ELLs 2.0 Paper	December 15, 2015
Kissimmee	Kindergarten ACCESS for ELLs ACCESS for ELLs 2.0 Paper	December 17, 2015
Kissimmee	Alternate ACCESS for ELLs	December 18, 2015
Boca Raton	Kindergarten ACCESS for ELLs ACCESS for ELLs 2.0 Paper	January 11, 2016
Boca Raton	Alternate ACCESS for ELLs	January 12, 2016
Online Training	Kindergarten ACCESS for ELLs ACCESS for ELLs 2.0 Paper Alternate ACCESS for ELLs	October 5, 2015 – March 25, 2016

2016 ACCESS for ELLs 2.0 Score Reports

The following reports will be provided for Kindergarten ACCESS for ELLs, ACCESS for ELLs 2.0, and Alternate ACCESS for ELLs:

- **Individual Student Report (ISR):** This report provides information about the student's scores on the ACCESS for ELLs 2.0 English proficiency test. Scores are reported as Proficiency Levels and as Scale Scores of four individual language domains and combined domains.
 - **Note:** For Kindergarten ACCESS for ELLs ONLY, there is also a separate Parent/Guardian Report that is exclusively online via WIDA AMS. The Parent/Guardian Report provides the same information as the ISR.
- **Student Roster Report:** This report lists individual scale scores along with their corresponding ELP levels for each grade according to grade-level clusters.
- **School Frequency Report:** This report shows the distribution of ELLs according to their language proficiency levels for each language domain and combination of domains in a stated grade of a specified school.
- **District Frequency Report:** This report shows the distribution of ELLs according to their language proficiency levels for each language domain and combination of domains in a stated grade of a specified district.

Important: Districts are scheduled to receive one hardcopy of each score report on May 20, 2016, but additional reports can be printed via WIDA AMS.

ACCESS for ELLs 2.0 Contact Information

Florida Department of Education

Office of Assessment

Sabrina Read, WIDA Florida ACCESS Test Trainer

- Telephone Number: 850-245-0843
- Facsimile: 850-245-0846
- Email: FLACCESS2.0@fldoe.org

WIDA Client Services Center

- Toll Free Telephone Number: 1-866-276-7735
- Email: help@wida.us

Data Recognition Corporation

- Toll Free Telephone Number: 1-855-787-9615
- Email: WIDA@datarecognitioncorp.com



www.FLDOE.org



www.FLDOE.org