



Pasco County Schools

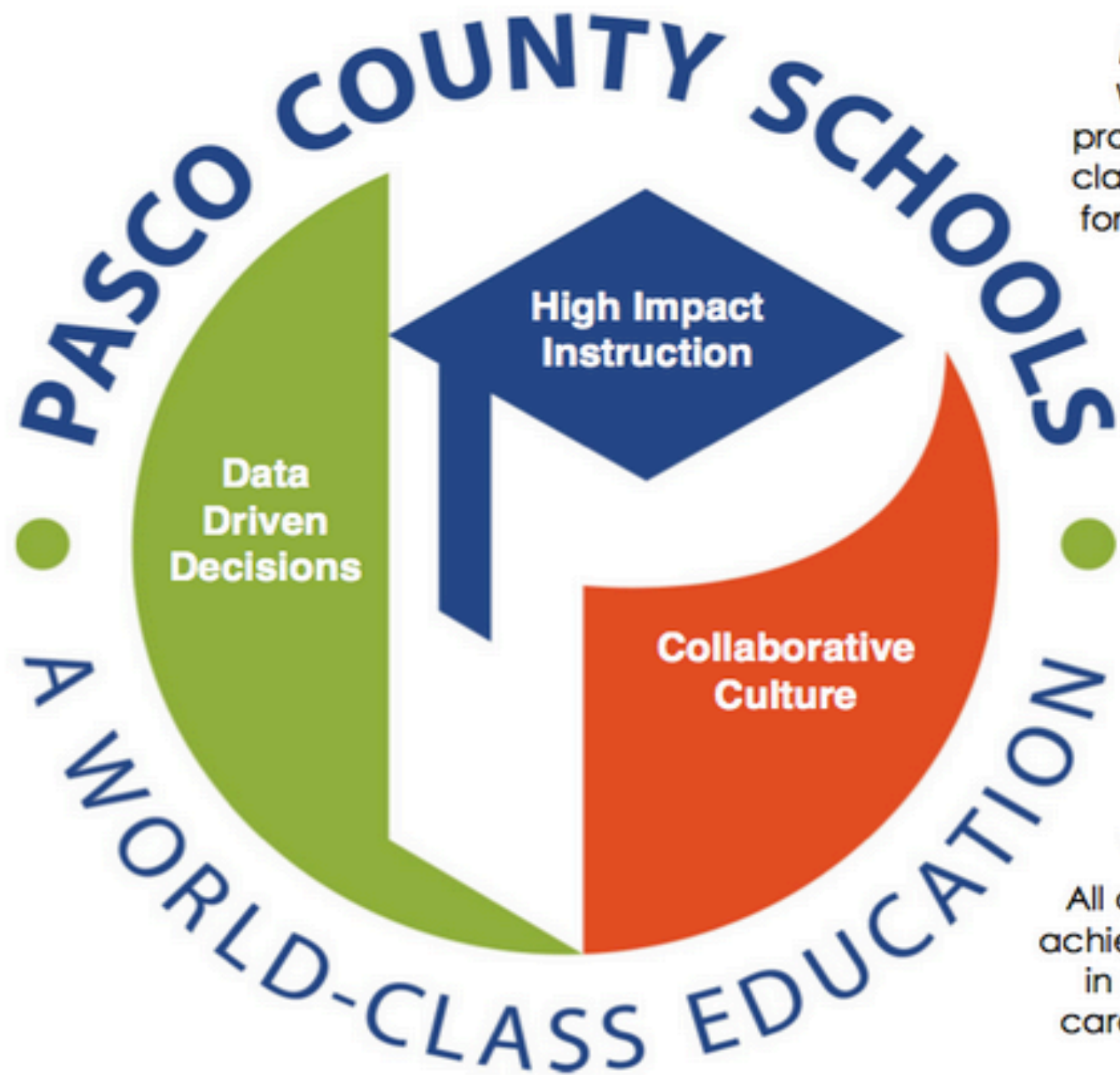
Providing a world-class education for all students

Kurt S. Browning, Superintendent of Schools

Our Journey to Becoming a Compassionate District

High Impact Instruction ● **Data Driven Decisions** ● **Collaborative Culture**

Taking Success To The Next Level



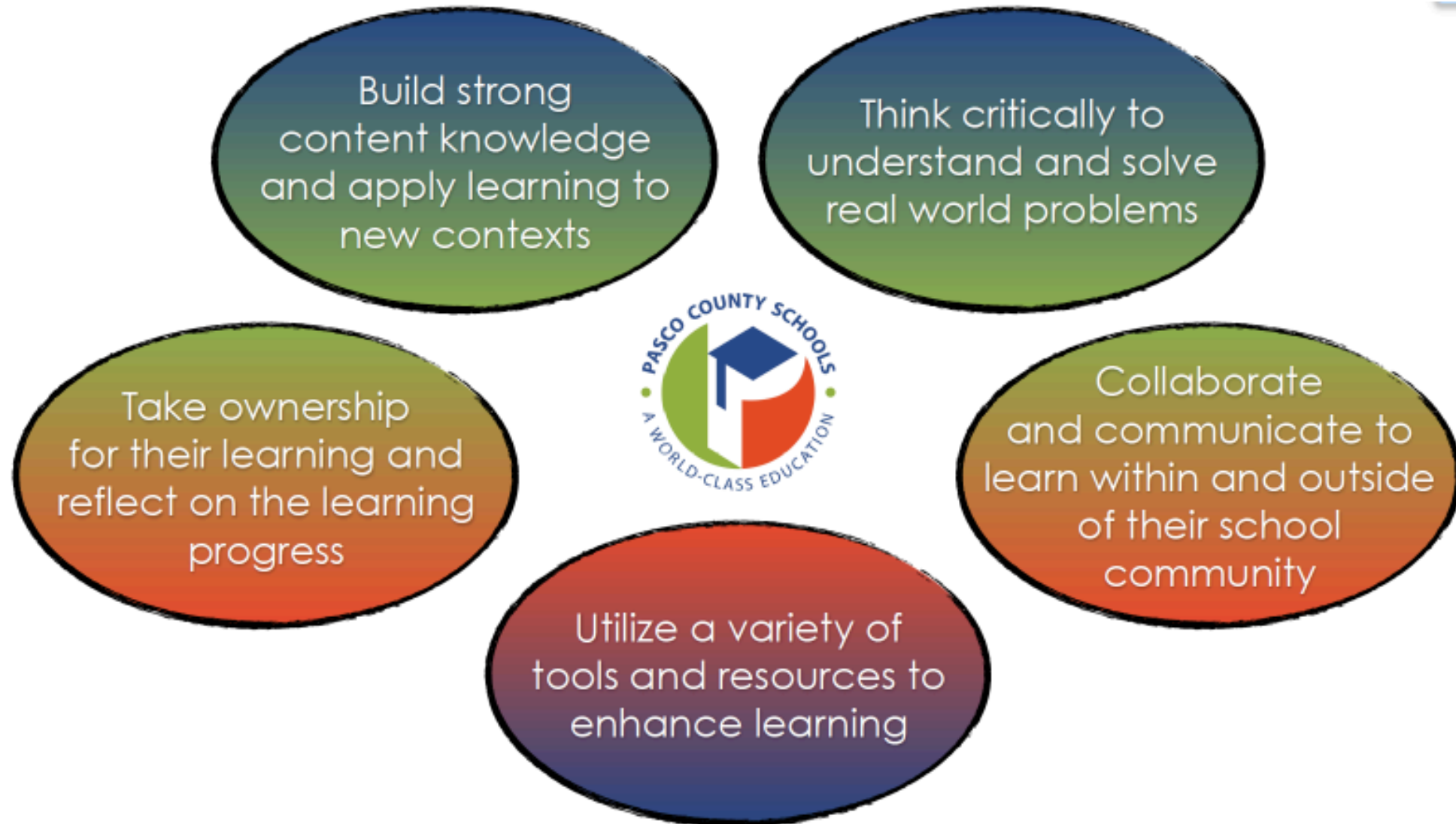
Mission

We exist to provide a world class education for all students.

Vision

All our students achieving success in college, in career, and life.

Aligning to our Common Vision of Instructional Excellence





Pasco County Schools

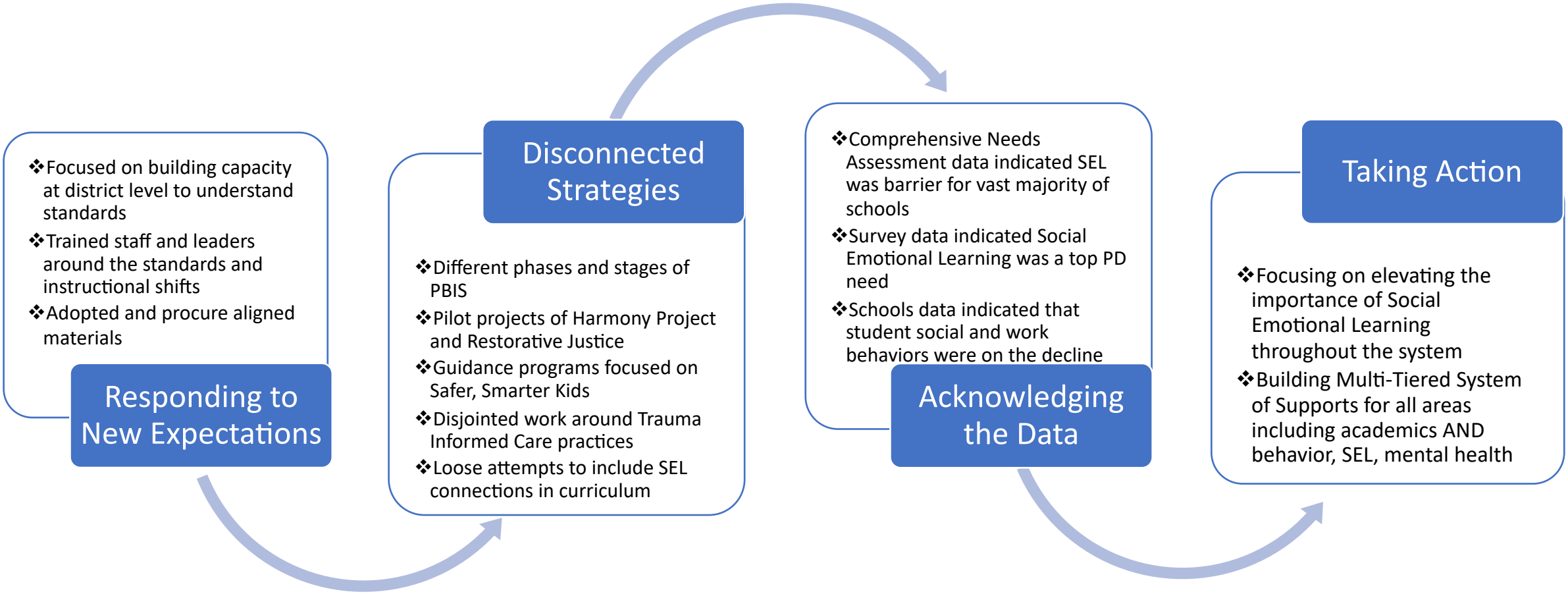
Providing a world-class education for all students

Kurt S. Browning, Superintendent of Schools

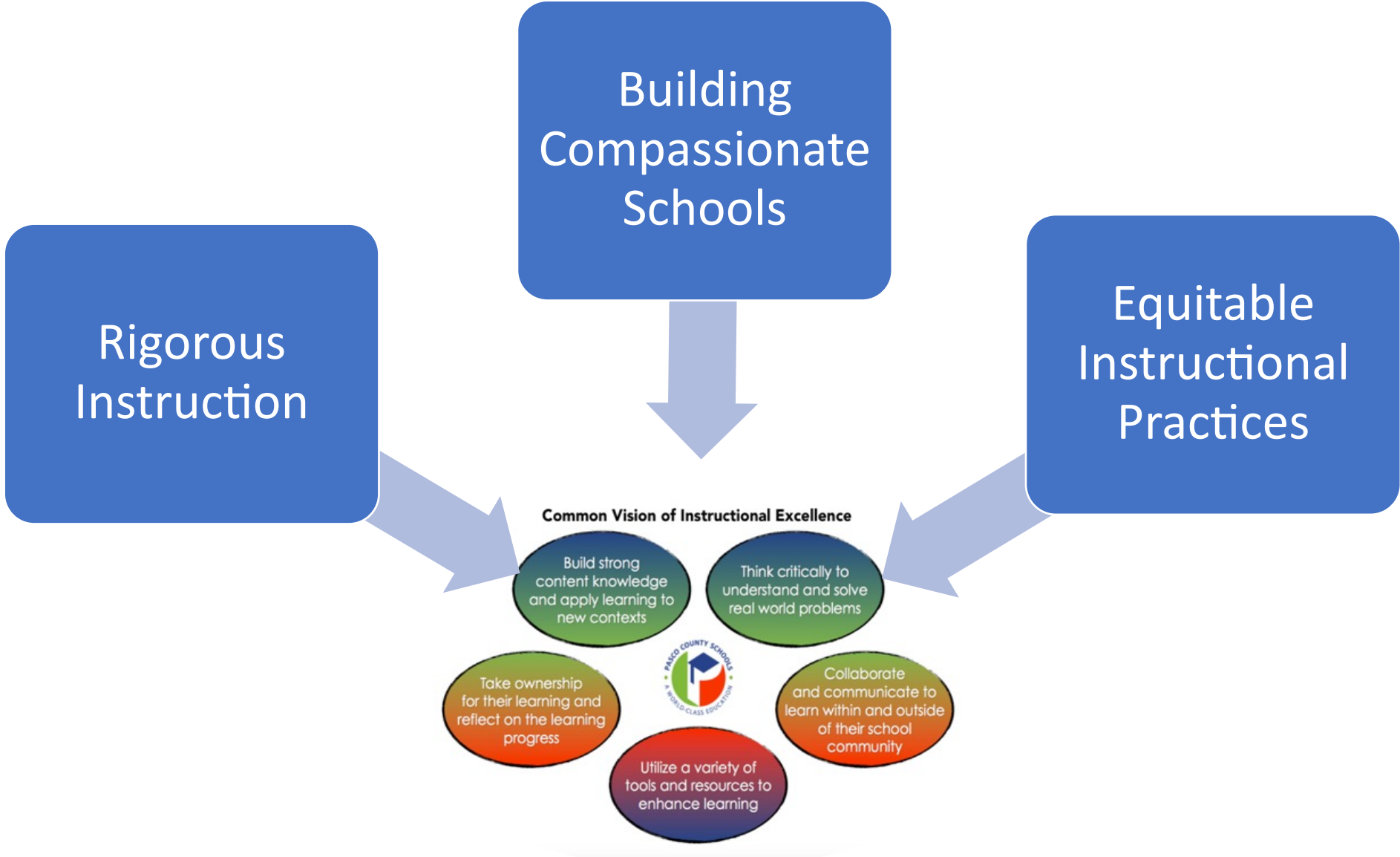
Our Story

High Impact Instruction ● **Data Driven Decisions** ● **Collaborative Culture**

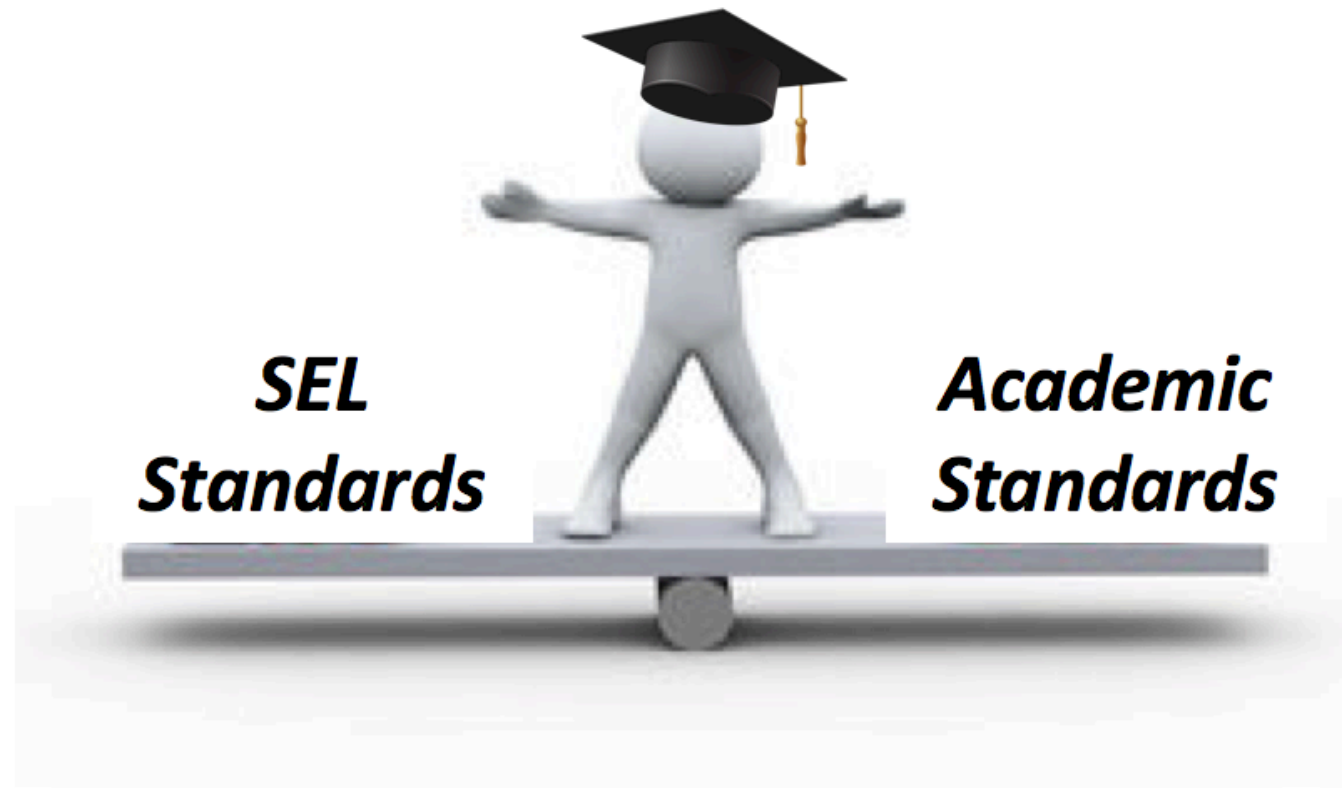
Our Journey...



Shaping a Vision for Academic Success



Our Dream!



Our World Class Graduate

Building the Team

The Right People

- Created district leadership team (D-SEL)
 - Shared work between curriculum and student services

The Right Minds

- Invited school staff to apply to be part of the Pasco Large Project Group
 - Created an incredible coalition of the willing and SEL ambassadors across the system

What is Social Emotional Learning?

Social Emotional Learning (SEL) is a holistic approach to developing the whole child with a set of skills, knowledge, behaviors, beliefs/dispositions to be college, career, and life ready. Social Emotional Learning enhances students' capacity to integrate skills, attitudes, and behaviors to deal effectively and ethically with daily tasks and challenges in order to be a successful members of our community.

The 5 Key Competencies of Social Emotional Learning

- Self-Awareness**: Recognize one's own feelings, interests, strengths, and limitations.
- Self-Management**: Regulate emotions and manage daily stressors.
- Social Awareness**: Take perspectives of others and appreciate similarities and differences.
- Relationship Skills**: Exhibit prosocial behavior and demonstrate positive social skills in order to develop meaningful relationships.
- Responsible Decision Making**: Make ethical decisions and strengthen the ability to develop appropriate solutions to identified problems.

Why Social Emotional Learning in Pasco County Schools?

Social and emotional learning (SEL) programs, which previously have shown immediate improvements in mental health, social skills, and academic achievement, continue to benefit students for months and even years to come.

Increases in: Social and behavioral attitudes, Empathy and teamwork, Academics.

Decreases in: Conduct problems, Emotional distress, Drug use.

Up to 18 years later, students exposed to SEL in school continue to do better than their peers on a number of indicators:

- Home/Community**: Better mental health, Reduce criminal behavior, Engage citizenship.
- School**: Better attendance, Less disruptive, Like school more, Increase academics.
- Workforce**: Readiness for post-secondary education, Ability to work in a team, Make decisions and solve problems, Effective communication and planning.

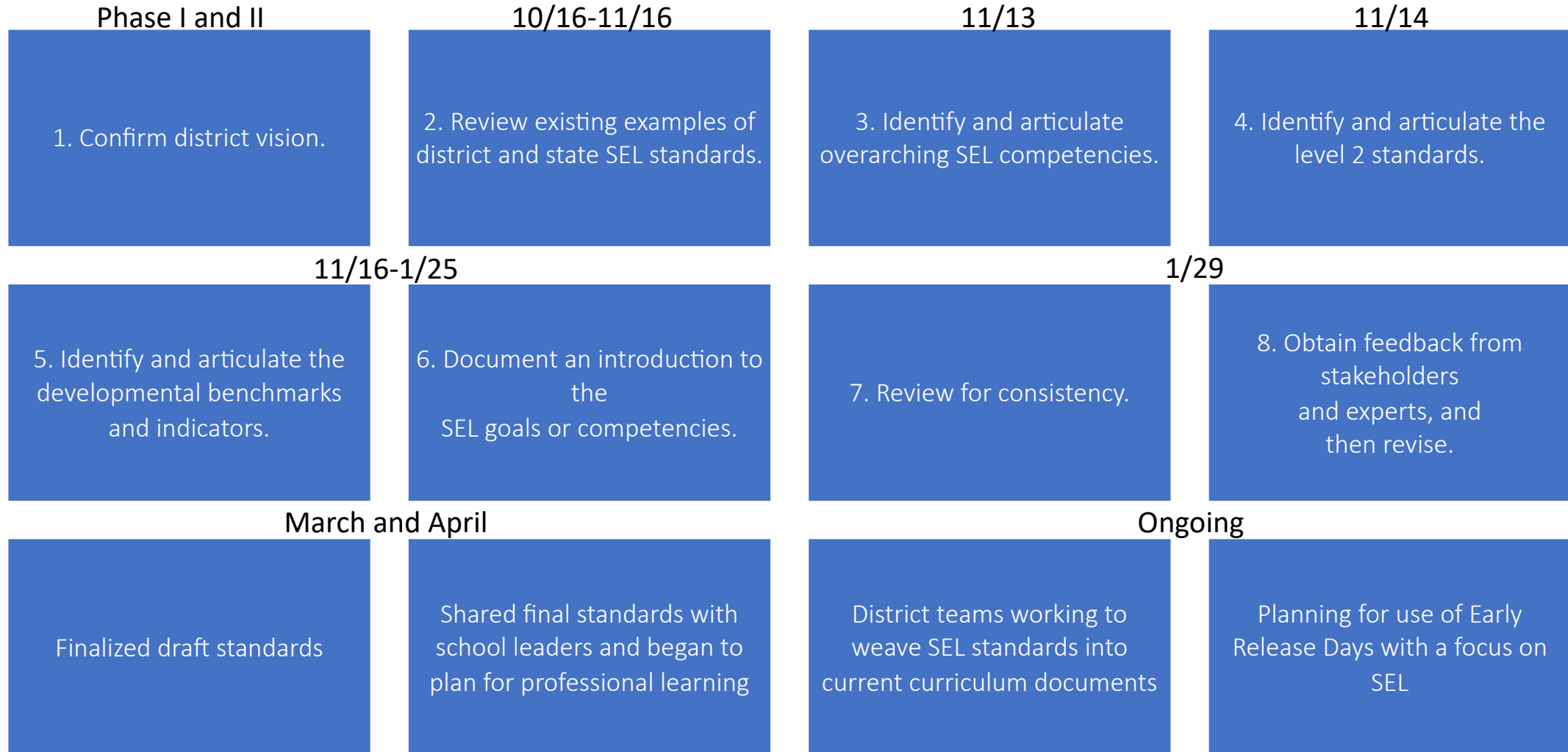
Pasco Schools Commitment to SEL

In Pasco County Schools we educate the whole child. Our students learn to think critically and solve complex problems while also becoming compassionate human beings. We ensure that all students have the skills they need to become responsible and contributing members of our community.

As part of this commitment, Pasco County has developed SEL standards that will be embedded as part of every child's course curriculum from kindergarten to graduation.

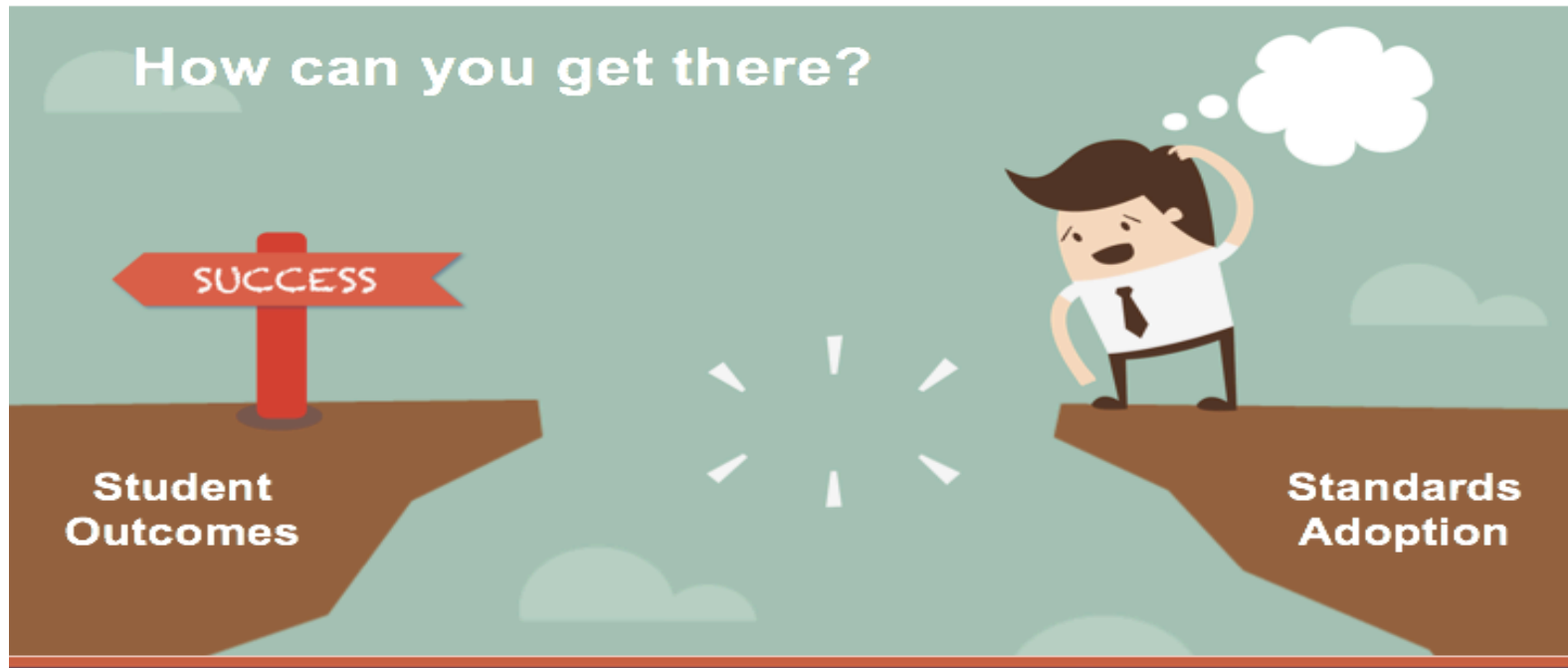
To learn more about Social Emotional Learning, visit www.casel.org.

Process for Standards Development



Critical Input

Concerns-Based Adoption Model

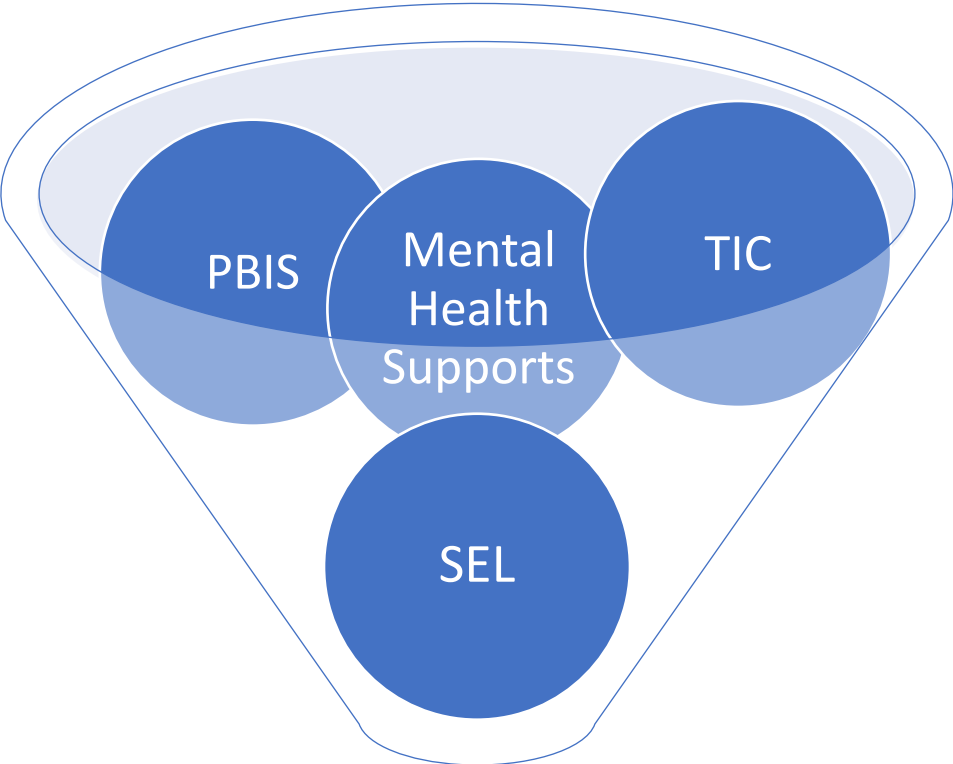


Allowed us to gather feedback, input and reactions from the field....

AND

Respond in a manner that kept the initiative moving forward

That's not all...



Compassionate Schools



Pasco County Schools

Providing a world-class education for all students

Kurt S. Browning, Superintendent of Schools

Supporting our Students

High Impact Instruction ● **Data Driven Decisions** ● **Collaborative Culture**

Elevating Student Voice and Promoting Leadership

Student Congress: Student leaders from each secondary school

- Learning through the Sandy Hook Promise
 - See Something Say Something
 - Start with Hello
- Leading as advocates at their school sites
- Leading as trainers for elementary students
 - Together We Stand 2019
 - Showcase amazing practices
 - Train elementary student leaders to carry the work forward
- Learning as SEL is integrated into curriculum and instruction (19-20)

Start with Hello...Student Video



Self-Management Social Awareness Relationship Skills



Pasco County Schools

Providing a world-class education for all students

Kurt S. Browning, Superintendent of Schools

Supporting our Staff

High Impact Instruction ● **Data Driven Decisions** ● **Collaborative Culture**

Supporting Staff to Support Students and Each Other

Trauma Informed Care

- Reinforcing the importance of Safety, Transparency, Predictability, Voice and Choice

Social Emotional Learning

- Curriculum integration
- District wide PD
- Focus on signature practices

Positive Behavior Intervention Supports

- District plan for training and supporting all schools

Summer Behavior Institute

- Building capacity of teachers and leaders to respond to challenging behaviors

Youth Mental Health First Aid

- Recognize
- Reach out
- Connect

Community Connections

- Consistent screening procedures for risk
- Sharing critical information to support students and families
- Increasing access to outside services

Be transparent... be open ... be there for your students!



Self-Management Social Awareness Relationship Skills



Pasco County Schools

Providing a world-class education for all students

Kurt S. Browning, Superintendent of Schools

Lessons Learned

High Impact Instruction ● **Data Driven Decisions** ● **Collaborative Culture**

Critical Components for this Work



Alignment in the system



The people in every phase



Consistent and ongoing communication



Explicit connections across initiatives



Support for the work from inside and outside



Believers in the work who stay committed!



Pasco County Schools

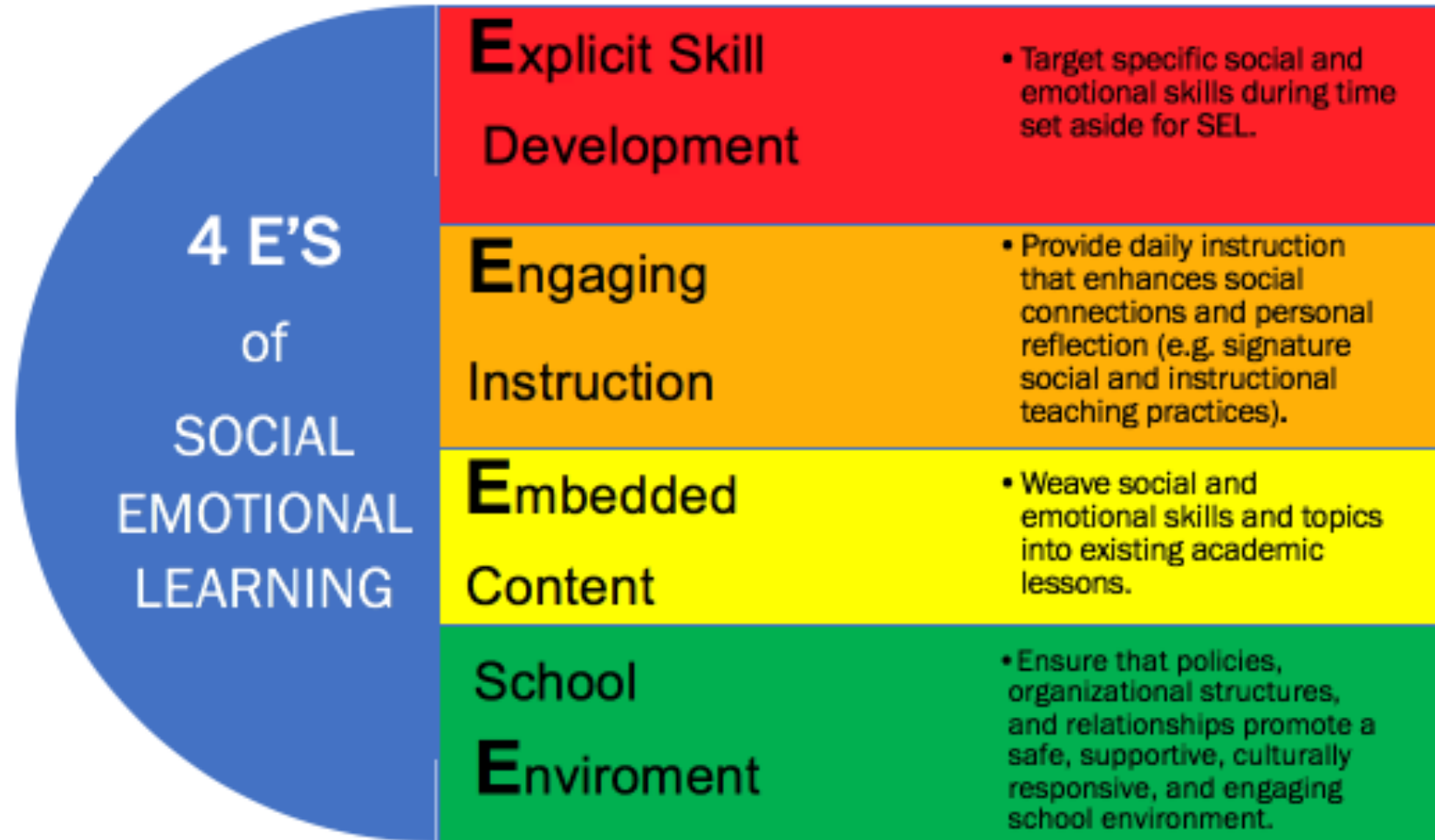
Providing a world-class education for all students

Kurt S. Browning, Superintendent of Schools

On the horizon...

High Impact Instruction ● **Data Driven Decisions** ● **Collaborative Culture**

Evidence-Based Approaches to Social and Emotional Learning (SEL)



Discussion and Questions

Thank you!