

Statistical Brief

Series 2008-15B

JANUARY 2008

IN THIS ISSUE:

Table 1: PK-12 Non-Promotions,

Distribution by Race

- Table 2: PK-12 Non-Promotion Rates by Race
- Table 3: PK-12 Non-Promotions by Grade Level
- Table 4: PK-12 Non-Promotion Rates by Grade Level
- Table 5: PK-12 Non-Promotion Counts and Rates by Gender

Non-Promotions in Florida's Public Schools, 2006-07

Background

As an indicator related to student achievement (pupil progression), the number of students who are not promoted to the next grade at the end of each school year can be a reflection of changes in curriculum requirements or changes in the student population itself. In addition, Florida school laws addressing student progression and the elimination of social promotion (s. 1008.25, F.S.) have an impact on the number and percentage of students who are not promoted at the end of each school year.

Each district school board establishes its own comprehensive program for student progression. School districts are required to set standards for evaluating each student's performance, including mastery of the Sunshine State Standards. These standards prescribe specific performance levels in reading, writing, science, and mathematics for each grade level. District student performance standards must also incorporate performance levels defined by the Commissioner of Education for statewide assessments. Students falling below these performance levels must receive remediation or be retained. Instruction for retained students must be within an intensive academic improvement program (AIP) that is different from the previous year's program and that takes into account the student's learning style.

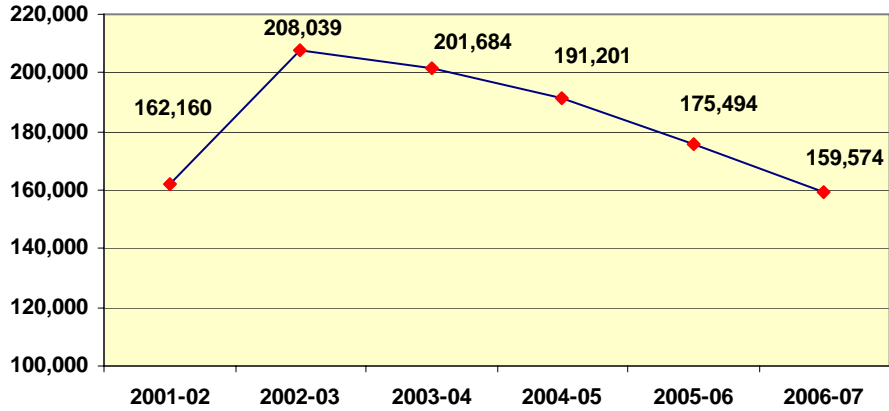
Florida law assigns first priority for the allocation of remedial/supplemental instructional resources to students who are deficient in reading by the end of the third grade. If a student's reading deficiency is not remedied by the end of the third grade, as demonstrated by scoring at level 2 or higher on the Reading portion of the third grade Florida Comprehensive Assessment Test (FCAT), the student must be retained. There are limited circumstances that must be approved by the district superintendent for exemptions from the mandatory retention.

From 2001-02 to 2006-07, the number of non-promotions ranged from a low of 159,574 reported for 2006-07 to a high of 208,039 reported for 2002-03. Figure 1 shows year-to-year changes in the count of PK-12 non-promotions in Florida's schools for the last six years.



Florida Department of Education
Dr. Eric Smith, Commissioner

Figure 1: PK-12 Non-Promotions, 2001-02 to 2006-07

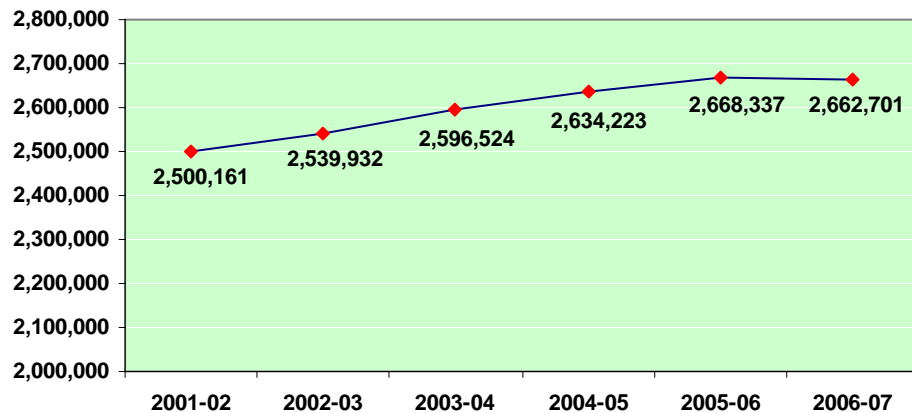


Percent Change in Number of PK-12 Non-Promotions from Prior Year					
Year	2002-03	2003-04	2004-05	2005-06	2006-07
% Change	+ 28.3%	- 3.1%	- 5.2%	- 8.2%	-9.1%

Data source: Florida Department of Education Automated Student Information Database, end-of-year (Survey 5) data.

Annual counts of non-promotions have decreased during the past five years; Florida's student membership fluctuated during the same period but did not follow the same patterns as non-promotions. Figure 2 shows the growth in student membership for Florida's public schools from years 2001-02 to 2006-07.

Figure 2: Student Membership, 2001-02 to 2006-07*



Percent Change in PK-12 Student Membership Count from Prior Year					
Year	2002-03	2003-04	2004-05	2005-06	2006-07
% Change	+ 1.6%	+ 2.2%	+ 1.5%	1.3%	-0.2%

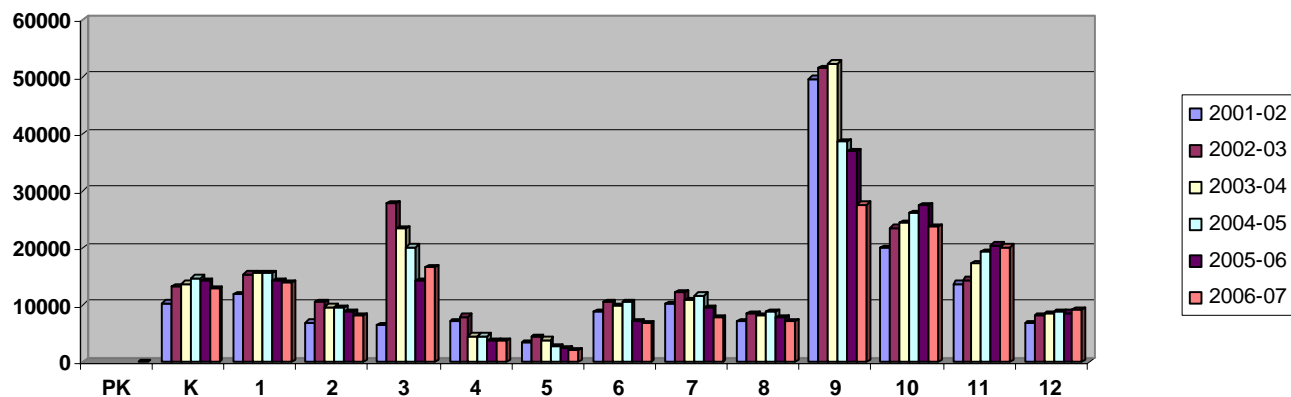
*Source: Florida DOE Statistical Brief. "Membership in Florida's Public Schools, Fall 2006." EIAS, January 2007. Includes revised statistics for years 2003-04 through 2005-06. Data for Florida Virtual School have been removed from membership totals for this brief to avoid duplication.

Non-Promotions by Grade

Non-promotions have been notable at the first and third grade levels in elementary schools, as well as for grades 9, 10, and 11 in high schools. In 2002-03, the increase in the number of students retained at the elementary level coincided with implementation of new state laws requiring mandatory retention of third-grade students who are not reading at grade level by the end of the school year. In 2002-03, the number of students retained in grades K-5 increased over the prior year by 71%, with third grade retentions alone increasing by 21,278, or 331%. In 2003-04, however, the total number of non-promotions declined slightly from the previous year, and this trend has continued through 2006-07.

In recent years, non-promotions in grades 9-12 may also have been influenced by increased requirements for graduation and more challenging curriculum standards, such as a statutory requirement for students to take Algebra 1 or an equivalent (or higher-level course) as part of the high-school mathematics curriculum (s.1003.43, F.S.). In addition, high school students must pass the Grade 10 Florida Comprehensive Assessment Test (FCAT) in reading and mathematics in order to qualify for a standard diploma. The first senior class to be affected by this requirement was the graduating class of 2003.

Figure 3: Number of Students Not Promoted, by Grade and School Year



Data from Figure 3 is displayed in tabular form in the table below.

	Pre-kindergarten	Kindergarten	Grade 1	Grade 2	Grade 3	Grade 4	Grade 5
2001-02		10,354	11,944	6,939	6,435	7,207	3,286
2002-03		13,278	15,360	10,378	27,713	7,922	4,442
2003-04		13,725	15,623	9,623	23,348	4,505	3,865
2004-05		14,720	15,682	9,575	20,121	4,558	2,745
2005-06		14,227	14,169	8,700	14,151	3,812	2,265
2006-07	0	12,931	13,767	8,174	16,676	3,778	1,887

	Grade 6	Grade 7	Grade 8	Grade 9	Grade 10	Grade 11	Grade 12
2001-02	8,854	10,049	7,016	49,711	19,899	13,665	6,801
2002-03	10,535	12,079	8,547	51,638	23,576	14,395	8,176
2003-04	9,887	10,734	8,073	52,355	24,366	17,222	8,358
2004-05	10,498	11,679	8,841	38,669	26,178	19,216	8,719
2005-06	7,182	9,571	7,789	37,045	27,500	20,473	8,610
2006-07	6,715	7,724	7,080	27,670	23,823	20,157	9,192

Non-Promotions by Race

For 2006-07, the lowest percentage of non-promotions, by ethnicity, occurred for Asian/Pacific Islander, white, and multiracial students. Black and Hispanic students had the highest percentage of non-promotions. Figures 4 and 5 provide additional data on non-promotions by racial/ethnic groupings.

Figure 4: Number of PK-12 Non-Promotions by Race, 2006-07

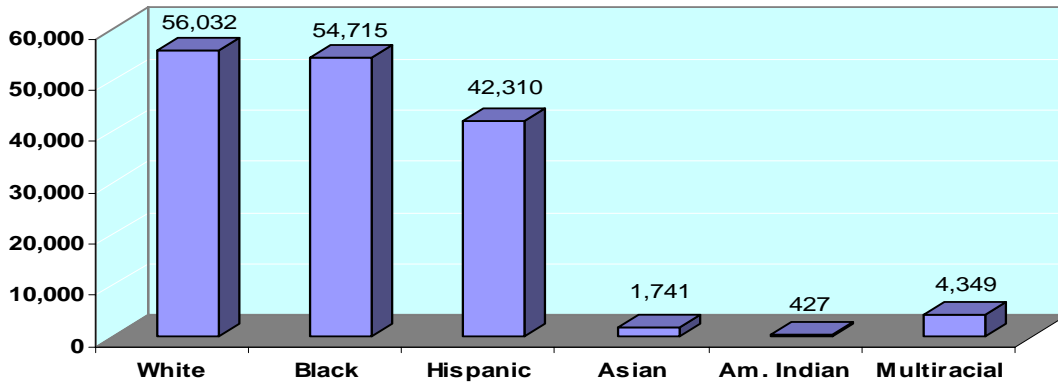
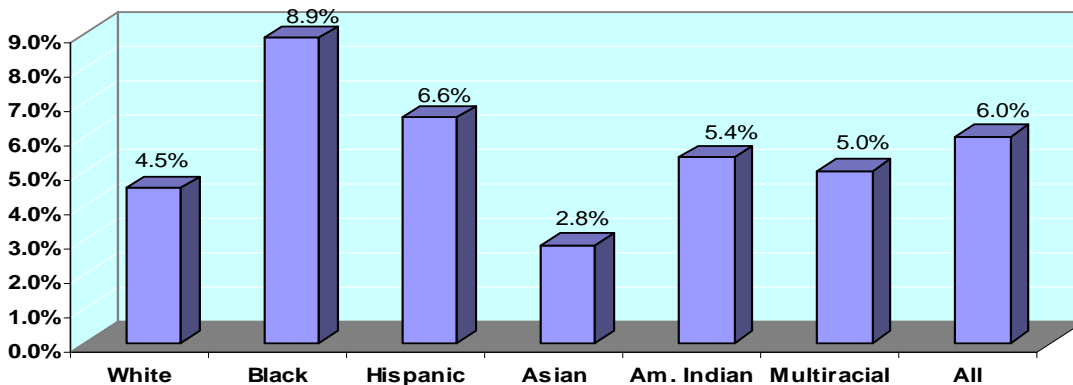


Figure 5: 2006-07 PK-12 Non-Promotion Rates by Race*



*The non-promotion rate is calculated by dividing the number of reported non-promotions by the October membership.

Impact of Rising Curriculum and Assessment Standards

In recent years, Florida has implemented higher standards for student progression (e.g., FCAT Reading requirements for third-grade students and Algebra I curriculum requirements for ninth-grade students). Of special interest is the FCAT requirement for Florida's third-grade students, who must attain proficiency in FCAT Reading beyond Level 1 (the lowest level on a range from Level 1 to Level 5) in order to be promoted to the next grade. Third-grade students who do not score higher than Level 1 on FCAT Reading must be retained, unless the district school board grants these students exemption from retention based on good cause. Exemption from retention for good cause must conform to specific provisions described in Florida law (s. 1008.25 [6][b], Florida Statutes).

Percentage of Students Scoring at Level 1 on the FCAT and Non-Promotion (Retention) Rates, by Grade

The following matrix compares the percentage of students scoring at the lowest FCAT level (Level 1) in Reading and Mathematics with the percentage of students retained (2006-07).*

FCAT '06-07: R = Reading M = Math	Gr. 3 @ Level 1	Gr. 3 Retained	Gr. 4 @ Level 1	Gr. 4 Retained	Gr. 5 @ Level 1	Gr. 5 Retained	Gr. 6 @ Level 1	Gr. 6 Retained
	19% R	8.1%	18% R	1.9%	14% R	1.0%	19% R	3.3%
	12% M		13% M		15% M		28% M	

Gr. 7 @ Level 1	Gr. 7 Retained	Gr. 8 @ Level 1	Gr. 8 Retained	Gr. 9 @ Level 1	Gr. 9 Retained	Gr. 10 @ Level 1	Gr. 10 Retained
17% R	4.0%	22% R	3.4%	28% R	11.6%	39% R	11.3%
20% M		18% M		17% M		14% M	

* Sources: DOE Student Data Base, 2006-07 Survey 5 non-promotions data.
FCAT Reading and Mathematics Scores: Statewide Comparison for 2007.

Tables on the following pages provide district-level data on the distribution of PK-12 non-promotions by race (Table 1), PK-12 non-promotion rates by race (Table 2), the number of non-promotions by grade level (Table 3), non-promotion rates by grade level (Table 4), and PK-12 non-promotions and non-promotion rates by gender (Table 5).

TABLE 1: PK-12 Non-Promotions, Distribution by Race, 2006-07*

District	White		Black		Hispanic		Asian		Am. Indian		Multiracial		Total Number
	Number	%	Number	%	Number	%	Number	%	Number	%	Number	%	
1 ALACHUA	576	31.4%	1,078	58.7%	105	5.7%	20	1.1%	1	0.1%	55	3.0%	1,835
2 BAKER	225	80.4%	48	17.1%	2	0.7%	0	0.0%	#	#	4	1.4%	280
3 BAY	1,175	68.0%	358	20.7%	94	5.4%	22	1.3%	7	0.4%	71	4.1%	1,727
4 BRADFORD	174	66.9%	75	28.8%	9	3.5%	1	0.4%	#	#	1	0.4%	260
5 BREVARD	4,590	60.1%	1,847	24.2%	737	9.6%	116	1.5%	29	0.4%	320	4.2%	7,639
6 BROWARD	2,830	18.7%	8,419	55.6%	3,361	22.2%	207	1.4%	21	0.1%	303	2.0%	15,141
7 CALHOUN	80	76.2%	18	17.1%	4	3.8%	0	0.0%	#	#	3	2.9%	105
8 CHARLOTTE	257	65.1%	61	15.4%	50	12.7%	5	1.3%	2	0.5%	20	5.1%	395
9 CITRUS	719	85.4%	46	5.5%	39	4.6%	6	0.7%	1	0.1%	31	3.7%	842
10 CLAY	716	66.9%	232	21.7%	86	8.0%	17	1.6%	0	0.0%	20	1.9%	1,071
11 COLLIER	638	29.3%	290	13.3%	1,190	54.6%	17	0.8%	10	0.5%	35	1.6%	2,180
12 COLUMBIA	582	62.9%	258	27.9%	48	5.2%	8	0.9%	4	0.4%	26	2.8%	926
13 DADE	1,156	5.8%	6,905	34.9%	11,489	58.0%	80	0.4%	8	0.0%	154	0.8%	19,792
14 DESOTO	183	43.0%	83	19.5%	151	35.4%	2	0.5%	#	#	7	1.6%	426
15 DIXIE	124	83.2%	19	12.8%	0	0.0%	#	#	#	#	6	4.0%	149
16 DUVAL	3,834	34.1%	6,101	54.2%	777	6.9%	214	1.9%	17	0.2%	306	2.7%	11,249
17 ESCAMBIA	1,080	41.8%	1,299	50.2%	103	4.0%	20	0.8%	15	0.6%	69	2.7%	2,586
18 FLAGLER	325	59.2%	124	22.6%	74	13.5%	6	1.1%	1	0.2%	19	3.5%	549
19 FRANKLIN	79	73.8%	23	21.5%	2	1.9%	#	#	#	#	3	2.8%	107
20 GADSDEN	27	4.1%	552	83.6%	75	11.4%	#	#	#	#	4	0.6%	660
21 GILCHRIST	202	87.8%	16	7.0%	10	4.3%	#	#	#	#	2	0.9%	230
22 GLADES	51	43.6%	20	17.1%	42	35.9%	#	#	#	#	1	0.9%	117
23 GULF	82	78.1%	18	17.1%	1	1.0%	0	0.0%	#	#	4	3.8%	105
24 HAMILTON	43	32.3%	71	53.4%	18	13.5%	0	0.0%	#	#	1	0.8%	133
25 HARDEE	157	27.1%	53	9.2%	355	61.3%	11	1.9%	#	#	3	0.5%	579
26 HENDRY	62	19.4%	54	16.9%	195	60.9%	1	0.3%	0	0.0%	8	2.5%	320
27 HERNANDO	1,085	73.8%	141	9.6%	183	12.4%	4	0.3%	5	0.3%	52	3.5%	1,470
28 HIGHLANDS	496	44.0%	255	22.6%	338	30.0%	4	0.4%	9	0.8%	24	2.1%	1,126
29 HILLSBOROUGH	3,807	28.6%	4,208	31.6%	4,604	34.6%	134	1.0%	36	0.3%	516	3.9%	13,305
30 HOLMES	131	85.1%	11	7.1%	6	3.9%	1	0.6%	#	#	4	2.6%	154
31 INDIAN RIVER	195	45.9%	94	22.1%	117	27.5%	2	0.5%	0	0.0%	17	4.0%	425
32 JACKSON	248	49.7%	202	40.5%	21	4.2%	2	0.4%	4	0.8%	22	4.4%	499
33 JEFFERSON	21	23.1%	68	74.7%	1	1.1%	#	#	#	#	1	1.1%	91
34 LAFAYETTE	31	75.6%	2	4.9%	5	12.2%	#	#	#	#	3	7.3%	41
35 LAKE	915	51.4%	420	23.6%	376	21.1%	19	1.1%	10	0.6%	40	2.2%	1,780
36 LEE	2,087	38.4%	1,200	22.1%	1,940	35.7%	41	0.8%	19	0.3%	151	2.8%	5,438
37 LEON	617	32.1%	1,174	61.1%	55	2.9%	21	1.1%	0	0.0%	55	2.9%	1,922
38 LEVY	357	69.6%	94	18.3%	51	9.9%	1	0.2%	#	#	8	1.6%	513
39 LIBERTY	64	86.5%	7	9.5%	1	1.4%	#	#	#	#	2	2.7%	74
40 MADISON	60	33.7%	110	61.8%	6	3.4%	#	#	1	0.6%	1	0.6%	178
41 MANATEE	1,063	41.3%	597	23.2%	810	31.5%	10	0.4%	2	0.1%	90	3.5%	2,572
42 MARION	648	49.9%	380	29.3%	202	15.6%	10	0.8%	3	0.2%	55	4.2%	1,298
43 MARTIN	148	39.4%	64	17.0%	147	39.1%	1	0.3%	0	0.0%	16	4.3%	376
44 MONROE	196	47.1%	58	13.9%	147	35.3%	0	0.0%	1	0.2%	14	3.4%	416
45 NASSAU	505	83.2%	69	11.4%	13	2.1%	4	0.7%	1	0.2%	15	2.5%	607
46 OKALOOSA	1,199	59.6%	492	24.5%	188	9.3%	30	1.5%	8	0.4%	95	4.7%	2,012
47 OKEECHOBEE	237	43.4%	108	19.8%	174	31.9%	0	0.0%	18	3.3%	9	1.6%	546
48 ORANGE	2,967	25.3%	4,289	36.6%	4,028	34.3%	237	2.0%	32	0.3%	176	1.5%	11,729
49 OSCEOLA	658	21.1%	408	13.1%	1,835	58.9%	45	1.4%	9	0.3%	161	5.2%	3,116
50 PALM BEACH	2,111	23.0%	4,209	45.8%	2,458	26.8%	96	1.0%	51	0.6%	263	2.9%	9,188
51 PASCO	2,080	72.8%	229	8.0%	422	14.8%	22	0.8%	11	0.4%	94	3.3%	2,858
52 PINELLAS	2,420	50.0%	1,507	31.1%	590	12.2%	116	2.4%	18	0.4%	187	3.9%	4,838
53 POLK	2,905	44.3%	1,906	29.1%	1,531	23.3%	43	0.7%	5	0.1%	171	2.6%	6,561
54 PUTNAM	472	49.5%	275	28.9%	168	17.6%	0	0.0%	3	0.3%	35	3.7%	953
55 ST. JOHNS	464	69.7%	147	22.1%	34	5.1%	8	1.2%	2	0.3%	11	1.7%	666
56 ST. LUCIE	940	34.4%	1,009	36.9%	654	23.9%	26	1.0%	3	0.1%	103	3.8%	2,735
57 SANTA ROSA	633	83.1%	61	8.0%	21	2.8%	15	2.0%	6	0.8%	26	3.4%	762
58 SARASOTA	1,122	58.5%	333	17.4%	350	18.2%	18	0.9%	5	0.3%	91	4.7%	1,919
59 SEMINOLE	1,396	42.9%	868	26.7%	761	23.4%	41	1.3%	14	0.4%	177	5.4%	3,257
60 SUMTER	234	61.6%	82	21.6%	56	14.7%	1	0.3%	1	0.3%	6	1.6%	380
61 SUWANNEE	219	68.9%	65	20.4%	31	9.7%	0	0.0%	1	0.3%	2	0.6%	318
62 TAYLOR	157	66.0%	70	29.4%	4	1.7%	1	0.4%	3	1.3%	3	1.3%	238
63 UNION	91	67.4%	33	24.4%	11	8.1%	#	#	#	#	0	0.0%	135
64 VOLUSIA	2,253	52.8%	978	22.9%	859	20.1%	24	0.6%	18	0.4%	139	3.3%	4,271
65 WAKULLA	183	80.6%	35	15.4%	1	0.4%	2	0.9%	0	0.0%	6	2.6%	227
66 WALTON	291	76.4%	49	12.9%	32	8.4%	1	0.3%	2	0.5%	6	1.6%	381
67 WASHINGTON	152	75.6%	37	18.4%	3	1.5%	2	1.0%	2	1.0%	5	2.5%	201
68 DEAF/BLIND	14	46.7%	5	16.7%	9	30.0%	0	0.0%	#	#	1	3.3%	30
69 DOZIER/OKEEC	97	26.4%	239	64.9%	29	7.9%	#	#	#	#	#	#	368
72 FAU LAB SCH	1	25.0%	2	50.0%	0	0.0%	0	0.0%	#	#	1	25.0%	4
73 FSU LAB SCH	35	43.8%	25	31.3%	15	18.8%	1	1.3%	#	#	4	5.0%	80
74 FAMU LAB SCH			18	94.7%					#	#	#	#	19
75 UF LAB SCH	1	0.2%	1	25.0%	1	25.0%	0	0.0%	#	#	1	25.0%	4
78 CONNECTIONS	43	62.3%	11	15.9%	2	2.9%	1	1.4%	#	#	12	17.4%	69
79 FLVA	16	76.2%	2	9.5%	3	14.3%	0	0.0%	#	#	#	#	21
STATE	56,032	35.1%	54,715	34.3%	42,310	26.5%	1,741	1.1%	427	0.3%	4,349	2.7%	159,574

*Data Source: DOE Survey 5 2006-07 data as of 11/01/07

A pound sign (#) replaces data when end-of-year membership = 10 or fewer students. A blank cell indicates no students in membership.

Table 2: 2006-07 PK-12 Non-Promotion Rates by Race*

District	White	Black	Hispanic	Asian	Am. Indian	Multiracial	Total
1 ALACHUA	4.0%	10.1%	6.5%	1.8%	1.5%	4.4%	6.3%
2 BAKER	5.4%	7.7%	3.9%	0.0%	#	5.7%	5.6%
3 BAY	5.8%	8.7%	9.2%	4.0%	5.8%	7.0%	6.4%
4 BRADFORD	6.6%	8.6%	12.0%	3.4%	#	1.4%	7.1%
5 BREVARD	8.6%	17.3%	12.9%	8.0%	12.1%	9.0%	10.2%
6 BROWARD	3.4%	8.6%	5.0%	2.4%	4.1%	4.5%	5.8%
7 CALHOUN	4.4%	6.1%	8.9%	0.0%	#	5.6%	4.7%
8 CHARLOTTE	1.8%	4.1%	3.8%	1.7%	4.3%	2.8%	2.2%
9 CITRUS	5.2%	6.6%	5.5%	2.7%	1.6%	5.4%	5.2%
10 CLAY	2.6%	5.3%	3.7%	1.8%	0.0%	2.5%	3.0%
11 COLLIER	3.4%	6.0%	6.7%	3.7%	7.4%	3.4%	5.1%
12 COLUMBIA	8.2%	11.6%	11.9%	9.0%	10.5%	7.6%	9.1%
13 DADE	3.5%	7.3%	5.3%	2.0%	2.4%	3.4%	5.6%
14 DESOTO	7.3%	10.4%	9.5%	7.4%	#	9.5%	8.5%
15 DIXIE	6.3%	9.9%	0.0%	#	#	19.4%	6.6%
16 DUVAL	7.2%	11.2%	9.7%	4.6%	7.1%	6.4%	9.0%
17 ESCAMBIA	4.7%	8.4%	7.9%	1.8%	4.8%	4.9%	6.1%
18 FLAGLER	3.8%	7.4%	6.6%	2.3%	2.3%	3.9%	4.5%
19 FRANKLIN	7.3%	12.6%	7.4%	#	#	16.7%	8.1%
20 GADSDEN	10.4%	10.3%	7.8%	#	#	5.8%	9.9%
21 GILCHRIST	7.6%	14.8%	11.9%	#	#	7.4%	8.0%
22 GLADES	8.7%	8.9%	10.1%	#	#	5.3%	9.3%
23 GULF	4.7%	4.9%	4.5%	0.0%	#	12.1%	4.8%
24 HAMILTON	4.8%	7.8%	9.6%	0.0%	#	4.3%	6.5%
25 HARDEE	8.0%	13.8%	13.9%	14.1%	#	6.7%	11.5%
26 HENDRY	2.8%	4.6%	5.1%	4.5%	0.0%	3.6%	4.3%
27 HERNANDO	6.3%	9.3%	7.4%	1.6%	7.4%	5.9%	6.5%
28 HIGHLANDS	7.5%	11.2%	11.3%	2.6%	11.4%	7.3%	9.0%
29 HILLSBOROUGH	4.6%	9.9%	8.8%	2.5%	6.3%	5.2%	6.9%
30 HOLMES	4.1%	9.1%	13.6%	4.5%	#	19.0%	4.6%
31 INDIAN RIVER	1.7%	3.6%	4.2%	1.0%	0.0%	3.2%	2.4%
32 JACKSON	5.4%	8.9%	12.4%	4.7%	9.1%	10.1%	6.8%
33 JEFFERSON	7.2%	7.9%	2.3%	#	#	7.1%	7.5%
34 LAFAYETTE	3.9%	1.7%	3.5%	#	#	10.3%	3.8%
35 LAKE	3.6%	6.8%	6.0%	2.3%	5.3%	4.8%	4.5%
36 LEE	5.0%	11.1%	8.8%	3.5%	7.3%	5.1%	6.9%
37 LEON	3.8%	8.9%	5.6%	2.3%	0.0%	5.5%	5.9%
38 LEVY	7.5%	9.9%	12.2%	3.2%	#	8.2%	8.2%
39 LIBERTY	5.5%	3.2%	1.6%	#	#	7.1%	5.0%
40 MADISON	5.0%	6.8%	7.2%	#	6.3%	7.1%	6.1%
41 MANATEE	4.3%	9.4%	8.8%	1.6%	4.1%	6.1%	6.1%
42 MARION	2.5%	4.6%	3.5%	1.7%	1.2%	3.3%	3.0%
43 MARTIN	1.2%	4.2%	4.4%	0.5%	0.0%	2.5%	2.1%
44 MONROE	3.9%	7.0%	7.3%	0.0%	3.6%	4.3%	5.0%
45 NASSAU	5.3%	7.3%	5.9%	4.5%	4.0%	8.2%	5.5%
46 OKALOOSA	5.4%	13.5%	11.3%	3.8%	5.7%	5.4%	6.7%
47 OKEECHOBEE	5.5%	17.3%	8.6%	0.0%	8.3%	7.8%	7.5%
48 ORANGE	4.9%	8.9%	7.5%	3.2%	4.2%	4.3%	6.7%
49 OSCEOLA	3.9%	7.6%	7.1%	3.5%	6.1%	6.1%	6.0%
50 PALM BEACH	3.0%	8.7%	6.2%	2.1%	5.5%	3.4%	5.4%
51 PASCO	4.2%	7.1%	5.2%	1.8%	5.7%	3.9%	4.4%
52 PINELLAS	3.4%	7.2%	6.2%	2.9%	5.5%	3.8%	4.4%
53 POLK	5.9%	9.6%	7.8%	3.4%	2.2%	6.3%	7.1%
54 PUTNAM	6.6%	8.9%	11.9%	0.0%	17.6%	10.3%	7.9%
55 ST. JOHNS	2.1%	6.3%	3.2%	1.4%	4.3%	2.2%	2.5%
56 ST. LUCIE	5.5%	9.2%	8.0%	4.0%	2.4%	6.1%	7.1%
57 SANTA ROSA	2.9%	4.5%	2.8%	3.1%	3.9%	3.4%	3.0%
58 SARASOTA	3.6%	8.5%	7.2%	2.4%	5.2%	5.1%	4.5%
59 SEMINOLE	3.5%	9.7%	6.6%	1.7%	8.6%	4.9%	4.9%
60 SUMTER	4.5%	6.7%	7.2%	1.6%	5.9%	5.1%	5.1%
61 SUWANNEE	4.9%	7.2%	7.0%	0.0%	6.7%	2.3%	5.3%
62 TAYLOR	6.5%	8.4%	8.2%	2.9%	17.6%	3.9%	7.0%
63 UNION	5.1%	8.9%	13.6%	#	#	0.0%	6.0%
64 VOLUSIA	5.3%	10.0%	8.8%	2.5%	13.0%	5.4%	6.5%
65 WAKULLA	4.3%	6.3%	1.8%	7.4%	0.0%	5.4%	4.5%
66 WALTON	5.1%	9.2%	11.1%	2.4%	5.3%	5.0%	5.7%
67 WASHINGTON	5.6%	6.2%	4.8%	8.3%	5.6%	4.6%	5.6%
68 DEAF/BLIND	3.7%	3.1%	5.5%	0.0%	#	7.7%	4.1%
69 DOZIER/OKEEC**	77.6%	106.7%	120.8%	#	#	#	98.1%
72 FAU LAB SCH	0.3%	1.3%	0.0%	0.0%	#	3.8%	0.6%
73 FSU LAB SCH	3.2%	4.5%	3.8%	1.6%	#	4.4%	3.6%
74 FAMU LAB SCH		4.3%			#	#	4.5%
75 UF LAB SCH	0.2%	0.4%	0.6%	0.0%	#	1.8%	0.3%
78 CONNECTIONS	9.4%	22.0%	2.9%	6.7%	#	14.5%	10.1%
79 FLVA	2.9%	5.1%	4.3%	0.0%	#	#	3.1%
STATE	4.5%	8.9%	6.6%	2.8%	5.4%	5.0%	6.0%

*Data Source: DOE Survey 5 2006-07 data as of 11/01/07

A pound sign (#) replaces data when end-of-year membership = 10 or fewer students. A blank cell indicates no students in membership.

**Because of a high migration rate, non-promotion rates for Dozier/Okeechobee may be greater than 100%.

TABLE 3: PK*-12 Non-Promotions by Grade Level, 2006-07**

District	K	1	2	3	4	5	6	7	8	9	10	11	12	K-12
1 ALACHUA	143	132	61	183	14	4	12	7	11	261	387	362	258	1,835
2 BAKER	54	42	23	15	6	9	19	28	5	37	26	14	2	280
3 BAY	201	181	105	129	53	71	120	152	163	166	114	163	109	1,727
4 BRADFORD	51	30	4	27	4	0	9	3	0	69	33	25	5	260
5 BREVARD	696	524	344	382	241	163	263	996	850	1,297	1,148	603	132	7,639
6 BROWARD	629	1,294	726	1,888	696	370	764	566	580	2,970	2,221	1,562	875	15,141
7 CALHOUN	12	26	12	9	4	2	8	4	3	9	11	5	0	105
8 CHARLOTTE	64	63	33	71	11	3	1	22	14	14	4	24	71	395
9 CITRUS	83	92	63	41	11	4	44	40	20	218	141	68	17	842
10 CLAY	187	125	54	122	35	27	24	42	69	32	20	269	65	1,071
11 COLLIER	206	200	124	234	19	3	22	17	80	626	288	161	200	2,180
12 COLUMBIA	90	122	60	56	25	12	53	61	32	227	52	118	18	926
13 DADE	1,167	1,131	1,019	3,701	272	140	867	720	776	3,174	4,046	1,771	1,008	19,792
14 DESOTO	80	65	41	52	19	4	3	4	8	58	30	49	13	426
15 DIXIE	25	13	18	4	1	0	10	2	3	9	41	21	2	149
16 DUVAL	933	895	498	934	420	190	661	718	635	1,797	1,297	1,567	704	11,249
17 ESCAMBIA	277	209	116	213	49	18	216	154	112	568	354	243	57	2,586
18 FLAGLER	71	49	26	76	9	2	25	38	43	98	45	32	35	549
19 FRANKLIN	12	5	4	11	4	2	8	5	8	23	14	10	1	107
20 GADSDEN	37	61	23	64	46	37	54	77	51	61	49	44	56	660
21 GILCHRIST	44	17	10	9	6	10	27	16	15	30	37	9	0	230
22 GLADES	12	15	11	7	3	0	2	12	13	20	15	6	1	117
23 GULF	15	14	5	7	1	1	2	9	10	15	16	10	0	105
24 HAMILTON	26	14	10	25	3	3	1	3	3	17	14	14	0	133
25 HARDEE	63	56	49	42	16	7	2	4	13	128	145	45	9	579
26 HENDRY	82	68	30	72	6	1	5	6	3	9	10	11	17	320
27 HERNANDO	72	55	22	134	19	25	33	117	38	426	287	175	67	1,470
28 HIGHLANDS	139	139	90	54	35	14	12	34	22	316	167	81	23	1,126
29 HILLSBOROUGH	508	1,274	490	774	186	138	598	804	879	2,759	2,663	1,860	372	13,305
30 HOLMES	38	27	5	10	2	1	2	13	11	22	11	2	10	154
31 INDIAN RIVER	30	98	53	73	7	1	8	5	11	66	37	16	20	425
32 JACKSON	101	82	46	41	11	7	18	31	34	71	32	15	10	499
33 JEFFERSON	10	0	2	5	1	0	16	4	2	20	24	3	4	91
34 LAFAYETTE	9	11	10	2	4	1	1	2	1	0	0	0	0	41
35 LAKE	232	165	104	239	60	28	49	87	64	286	204	141	121	1,780
36 LEE	762	512	312	518	107	61	244	207	105	1,110	788	426	286	5,438
37 LEON	173	307	104	186	69	23	96	127	61	275	163	284	54	1,922
38 LEVY	68	75	35	40	35	5	38	28	24	72	23	54	16	513
39 LIBERTY	21	14	2	7	10	4	7	5	2	1	0	0	1	74
40 MADISON	22	40	10	14	4	0	5	7	13	20	22	16	5	178
41 MANATEE	272	324	216	211	85	19	34	23	19	594	307	232	236	2,572
42 MARION	219	245	97	225	87	28	91	100	77	0	1	0	128	1,298
43 MARTIN	106	79	33	60	10	5	8	7	3	20	14	9	22	376
44 MONROE	36	28	8	33	17	5	13	47	27	82	61	47	12	416
45 NASSAU	80	81	44	50	32	24	25	11	16	83	79	52	30	607
46 OKALOOSA	107	116	95	148	72	36	158	92	93	446	322	170	157	2,012
47 OKEECHOBEE	75	59	39	50	14	3	22	26	15	74	102	43	24	546
48 ORANGE	710	788	598	1,149	124	83	349	303	382	1,788	2,047	2,561	847	11,729
49 OSCEOLA	240	207	185	368	91	45	267	223	147	509	289	368	177	3,116
50 PALM BEACH	521	659	372	791	166	40	314	389	321	1,611	1,637	1,529	838	9,188
51 PASCO	116	90	70	484	14	12	28	19	21	959	385	448	212	2,858
52 PINELLAS	358	549	365	602	68	17	66	131	177	8	14	2,011	472	4,838
53 POLK	942	641	385	590	140	72	369	363	341	945	775	563	435	6,561
54 PUTNAM	121	146	77	33	39	16	65	84	78	90	129	64	11	953
55 ST. JOHNS	50	64	28	72	6	7	35	37	20	116	110	65	56	666
56 ST. LUCIE	264	220	162	350	48	6	54	106	80	454	469	422	100	2,735
57 SANTA ROSA	153	82	40	34	11	9	28	51	46	48	49	106	105	762
58 SARASOTA	144	137	77	179	19	7	39	24	29	449	452	272	91	1,919
59 SEMINOLE	267	364	152	253	58	13	173	198	150	674	446	296	213	3,257
60 SUMTER	71	43	61	17	18	7	36	21	19	44	30	9	4	380
61 SUWANNEE	44	22	13	39	5	2	28	8	0	36	73	34	14	318
62 TAYLOR	60	25	20	12	5	3	5	4	8	23	32	27	14	238
63 UNION	26	11	2	13	3	0	7	3	7	32	18	13	0	135
64 VOLUSIA	370	397	233	334	94	19	95	160	120	933	800	425	291	4,271
65 WAKULLA	58	31	7	9	3	2	6	9	8	32	23	38	1	227
66 WALTON	34	54	30	33	13	6	5	50	22	57	33	22	22	381
67 WASHINGTON	30	43	3	24	1	5	5	15	17	33	16	7	2	201
68 DEAF/BLIND	4	0	0	12	1	0	0	0	1	4	2	2	4	30
69 DOZIER/OKEEC	0	0	0	0	0	0	6	13	38	146	104	34	27	368
72 FAU LAB SCH	1	1	0	2	0	0	0	0	0	0	0	0	0	4
73 FSU LAB SCH	4	3	2	7	1	0	19	10	5	0	23	5	1	80
74 FAMU LAB SCH	0	0	0	0	1	0	0	6	2	3	2	4	1	19
75 UF LAB SCH	1	1	0	0	0	0	0	1	0	0	0	0	1	4
78 CONNECTIONS	2	14	4	17	6	2	11	10	3	0	0	0	0	69
79 FLVA	0	1	2	4	2	3	5	3	1	0	0	0	0	21
STATE TOTALS	12,931	13,767	8,174	16,676	3,778	1,887	6,715	7,724	7,080	27,670	23,823	20,157	9,192	159,574

*No non-promotions occurred among pre-kindergarten students.

**Data Source: DOE Survey 5 2006-07 data as of 11/01/07

Table 4: PK-12 Non-Promotion Rates by Grade Level, 2006-07*

District	K	1	2	3	4	5	6	7	8	9	10	11	12	K-12
1 ALACHUA	6.6%	6.0%	3.0%	8.4%	0.7%	0.2%	0.6%	0.4%	0.5%	10.2%	15.5%	15.3%	13.2%	6.3%
2 BAKER	11.8%	9.6%	5.7%	4.2%	1.8%	2.5%	4.8%	7.4%	1.4%	8.9%	7.1%	4.5%	0.8%	5.6%
3 BAY	9.5%	8.5%	5.2%	6.5%	2.7%	3.6%	6.3%	7.0%	7.9%	7.8%	5.6%	8.2%	6.2%	6.4%
4 BRADFORD	15.6%	10.0%	1.4%	10.2%	1.4%	0.0%	3.6%	1.2%	0.0%	22.8%	12.2%	10.4%	2.5%	7.1%
5 BREVARD	12.6%	9.4%	6.4%	7.2%	4.5%	3.1%	4.7%	16.5%	14.7%	18.9%	19.4%	10.7%	2.7%	10.2%
6 BROWARD	3.4%	6.5%	3.8%	9.4%	3.5%	1.9%	3.7%	2.9%	2.8%	12.9%	10.7%	8.3%	5.0%	5.8%
7 CALHOUN	7.4%	14.2%	7.0%	5.4%	2.3%	1.3%	4.6%	2.6%	1.5%	5.3%	6.7%	3.4%	0.0%	4.7%
8 CHARLOTTE	5.7%	5.3%	2.8%	5.8%	1.0%	0.2%	0.1%	1.7%	0.9%	0.9%	0.3%	1.5%	4.8%	2.2%
9 CITRUS	7.3%	7.8%	5.5%	3.6%	1.0%	0.3%	3.5%	3.3%	1.5%	13.7%	10.3%	6.0%	1.6%	5.2%
10 CLAY	7.2%	4.7%	2.1%	4.5%	1.3%	1.0%	0.9%	1.5%	2.3%	1.1%	0.7%	9.4%	2.8%	3.0%
11 COLLIER	6.0%	5.9%	3.8%	7.0%	0.6%	0.1%	0.7%	0.6%	2.5%	14.8%	8.5%	6.0%	7.4%	5.1%
12 COLUMBIA	10.8%	13.1%	7.4%	7.5%	3.4%	1.6%	6.7%	7.7%	4.0%	23.7%	8.1%	18.4%	3.5%	9.1%
13 DADE	4.6%	4.2%	3.8%	13.0%	1.0%	0.5%	3.2%	3.0%	2.8%	10.3%	13.1%	7.1%	4.6%	5.6%
14 DESOTO	18.0%	14.4%	10.0%	14.3%	5.6%	1.2%	0.9%	1.2%	2.0%	12.5%	6.7%	17.9%	5.1%	8.5%
15 DIXIE	11.8%	7.9%	10.0%	2.7%	0.7%	0.0%	5.9%	1.6%	1.7%	5.0%	19.9%	16.9%	1.7%	6.6%
16 DUVAL	8.7%	8.4%	4.9%	9.0%	4.3%	2.0%	6.8%	7.6%	6.9%	15.0%	16.0%	21.0%	10.3%	9.0%
17 ESCAMBIA	8.4%	6.4%	3.6%	6.7%	1.5%	0.6%	6.3%	4.9%	3.3%	12.9%	10.9%	9.1%	2.3%	6.1%
18 FLAGLER	8.0%	5.4%	2.9%	7.9%	0.9%	0.2%	2.5%	4.0%	4.6%	8.9%	4.6%	3.7%	4.8%	4.5%
19 FRANKLIN	12.5%	4.2%	3.8%	9.7%	4.3%	2.2%	8.1%	6.2%	7.1%	23.5%	14.0%	14.5%	1.6%	8.1%
20 GADSDEN	6.2%	11.4%	4.6%	12.3%	9.2%	8.3%	12.5%	15.9%	10.8%	11.7%	11.3%	12.5%	19.5%	9.9%
21 GILCHRIST	17.2%	7.8%	5.3%	4.7%	3.1%	4.3%	12.6%	7.2%	7.5%	12.7%	17.2%	4.8%	0.0%	8.0%
22 GLADES	10.1%	13.4%	12.2%	6.0%	3.1%	0.0%	1.7%	11.8%	11.3%	21.3%	16.5%	13.0%	2.0%	9.3%
23 GULF	9.9%	10.1%	3.4%	4.7%	0.6%	0.7%	1.4%	5.1%	5.3%	7.5%	8.7%	5.3%	0.0%	4.8%
24 HAMILTON	14.4%	8.1%	7.1%	14.5%	2.3%	2.1%	0.8%	2.1%	1.9%	8.4%	9.9%	10.5%	0.0%	6.5%
25 HARDEE	13.1%	13.1%	11.9%	10.2%	4.0%	1.8%	0.5%	1.2%	3.6%	25.2%	42.9%	15.3%	3.6%	11.5%
26 HENDRY	12.6%	11.0%	5.1%	12.1%	1.0%	0.2%	0.9%	1.2%	0.5%	1.5%	1.8%	2.1%	3.3%	4.3%
27 HERNANDO	4.2%	3.1%	1.4%	7.5%	1.1%	1.5%	1.9%	7.0%	2.1%	17.4%	16.3%	11.5%	5.8%	6.5%
28 HIGHLANDS	13.4%	14.3%	8.8%	5.6%	3.8%	1.5%	1.3%	3.8%	2.2%	24.9%	19.6%	10.5%	3.3%	9.0%
29 HILLSBOROUGH	3.4%	7.8%	3.2%	5.0%	1.2%	0.9%	3.9%	5.4%	5.8%	17.7%	18.8%	14.3%	3.4%	6.9%
30 HOLMES	13.8%	9.8%	2.2%	4.3%	0.8%	0.4%	0.7%	5.0%	3.9%	7.7%	4.3%	0.8%	4.8%	4.6%
31 INDIAN RIVER	2.3%	7.4%	3.9%	5.4%	0.6%	0.1%	0.6%	0.4%	0.8%	4.1%	2.6%	1.2%	1.8%	2.4%
32 JACKSON	17.4%	13.6%	8.2%	7.2%	2.2%	1.3%	3.4%	5.6%	6.1%	10.7%	6.1%	3.1%	2.4%	6.8%
33 JEFFERSON	8.5%	0.0%	1.9%	5.1%	1.4%	0.0%	17.4%	5.5%	2.1%	20.8%	24.2%	5.4%	7.7%	7.5%
34 LAFAYETTE	8.4%	12.4%	11.9%	2.3%	4.6%	1.3%	1.4%	2.6%	1.3%	0.0%	0.0%	0.0%	0.0%	3.8%
35 LAKE	7.5%	5.3%	3.3%	7.6%	2.0%	1.0%	1.6%	3.0%	2.2%	8.3%	6.8%	5.1%	5.2%	4.5%
36 LEE	11.2%	7.9%	5.2%	8.2%	1.8%	1.1%	4.1%	3.6%	1.8%	15.7%	13.9%	8.1%	6.3%	6.9%
37 LEON	6.9%	11.0%	4.1%	7.4%	2.9%	1.0%	4.1%	5.2%	2.6%	9.8%	7.0%	12.1%	2.9%	5.9%
38 LEVY	13.6%	14.3%	7.4%	8.5%	7.5%	1.1%	7.9%	5.6%	4.6%	13.6%	5.0%	12.8%	5.3%	8.2%
39 LIBERTY	17.9%	12.1%	2.0%	7.1%	9.5%	4.5%	8.0%	4.5%	1.7%	0.6%	0.0%	0.0%	1.3%	5.0%
40 MADISON	9.7%	17.0%	5.2%	6.7%	2.0%	0.0%	2.5%	4.0%	5.6%	6.9%	7.5%	8.1%	3.0%	6.1%
41 MANATEE	7.6%	8.9%	6.3%	6.6%	2.6%	0.6%	1.1%	0.8%	0.6%	14.9%	9.9%	8.9%	10.2%	6.1%
42 MARION	6.8%	7.4%	3.0%	7.0%	2.8%	0.9%	2.7%	3.1%	2.3%	0.0%	0.0%	0.0%	5.4%	3.0%
43 MARTIN	8.0%	6.1%	2.5%	4.6%	0.8%	0.4%	0.6%	0.5%	0.2%	1.2%	0.9%	0.7%	1.8%	2.1%
44 MONROE	6.5%	4.5%	1.4%	5.5%	2.8%	0.9%	2.2%	6.9%	3.9%	10.9%	8.9%	8.0%	2.3%	5.0%
45 NASSAU	10.1%	9.4%	5.6%	6.0%	3.8%	3.0%	3.1%	1.4%	1.8%	8.4%	8.3%	6.8%	4.1%	5.5%
46 OKALOOSA	4.7%	5.2%	4.5%	6.7%	3.2%	1.7%	6.7%	4.1%	3.9%	16.0%	12.9%	7.4%	7.1%	6.7%
47 OKEECHOBEE	12.2%	9.9%	6.9%	8.7%	2.5%	0.6%	4.3%	4.8%	2.6%	11.6%	18.1%	9.0%	6.0%	7.5%
48 ORANGE	5.2%	5.7%	4.3%	8.2%	0.9%	0.6%	2.6%	2.4%	2.8%	12.2%	14.9%	20.1%	8.4%	6.7%
49 OSCEOLA	6.5%	5.4%	4.8%	9.5%	2.4%	1.2%	6.5%	5.7%	3.7%	10.4%	7.0%	9.1%	6.2%	6.0%
50 PALM BEACH	4.1%	5.0%	2.9%	6.1%	1.3%	0.3%	2.4%	3.1%	2.4%	10.4%	11.6%	12.2%	7.7%	5.4%
51 PASCO	2.4%	1.8%	1.4%	9.5%	0.3%	0.2%	0.6%	0.4%	0.4%	14.4%	7.9%	10.8%	6.4%	4.4%
52 PINELLAS	4.6%	6.7%	4.6%	7.3%	0.9%	0.2%	0.8%	1.7%	2.1%	0.1%	0.1%	23.9%	6.9%	4.4%
53 POLK	11.7%	8.2%	5.2%	8.0%	2.0%	1.1%	5.3%	5.4%	4.8%	12.1%	11.1%	9.1%	8.4%	7.1%
54 PUTNAM	11.6%	14.1%	7.9%	3.7%	4.2%	1.8%	6.8%	9.5%	8.2%	9.4%	14.9%	9.3%	1.7%	7.9%
55 ST. JOHNS	2.6%	3.2%	1.4%	3.8%	0.3%	0.3%	1.6%	1.8%	1.0%	4.9%	5.2%	3.3%	3.1%	2.5%
56 ST. LUCIE	8.4%	7.0%	5.3%	10.9%	1.6%	0.2%	1.7%	3.6%	2.6%	12.8%	15.9%	16.1%	5.2%	7.1%
57 SANTA ROSA	8.3%	4.3%	2.2%	1.9%	0.6%	0.5%	1.5%	2.6%	2.3%	2.2%	2.5%	5.2%	6.0%	3.0%
58 SARASOTA	4.9%	4.4%	2.4%	5.6%	0.6%	0.2%	1.2%	0.8%	0.9%	11.7%	13.0%	8.5%	3.4%	4.5%
59 SEMINOLE	5.8%	7.5%	3.2%	5.3%	1.2%	0.3%	3.3%	3.8%	2.8%	11.0%	8.0%	6.1%	4.9%	4.9%
60 SUMTER	12.1%	7.3%	10.8%	3.2%	3.3%	1.3%	5.8%	3.7%	3.2%	6.7%	5.9%	1.9%	1.0%	5.1%
61 SUWANNEE	8.5%	4.6%	2.9%	8.6%	1.1%	0.5%	6.2%	1.7%	0.0%	7.0%	15.7%	8.1%	4.4%	5.3%
62 TAYLOR	20.3%	9.2%	8.8%	4.8%	2.0%	1.3%	2.2%	1.8%	3.0%	8.9%	13.9%	14.9%	7.3%	7.0%
63 UNION	12.9%	5.6%	1.2%	7.7%	1.7%	0.0%	4.1%	1.8%	3.8%	14.2%	11.9%	9.9%	0.0%	6.0%
64 VOLUSIA	7.5%	8.0%	4.7%	6.6%	1.9%	0.4%	1.9%	3.2%	2.3%	14.2%	15.3%	9.4%	7.1%	6.5%
65 WAKULLA	12.8%	7.8%	1.9%	2.4%	0.9%	0.6%	1.7%	2.3%	2.1%	7.1%	7.3%	11.6%	0.4%	4.5%
66 WALTON	5.9%	9.8%	5.9%	6.7%	2.7%	1.2%	1.0%	9.3%	4.0%	9.7%	6.3%	4.9%	5.7%	5.7%
67 WASHINGTON	11.5%	13.8%	1.1%	8.5%	0.4%	1.9%	1.9%	5.1%	5.9%	10.7%	6.1%	2.7%	1.0%	5.6%
68 DEAF/BLIND	28.6%	0.0%	0.0%	35.3%	3.2%	0.0%	0.0%	0.0%	1.5%	4.9%	2.3%	2.2%	3.2%	4.1%
69 DOZIER/OKEEC [‡]	0.0%	0.0%	0.0%	0.0%	0.0%	0.0%	150.0%	108.3%	126.7%	94.8%	103.0%	70.8%	103.8%	98.1%
72 FAU LAB SCH	1.6%	1.6%	0.0%	2.8%	0.0%	0.0%	0.0%	0.0%	0.0%	0.0%	0.0%	0.0%	0.0%	0.6%
73 FSU LAB SCH	2.3%	1.7%	1.1%	3.7%	0.5%	0.0%	11.8%	6.3%	3.1%	0.0%	13.7%	3.3%	0.7%	3.6%
74 FAMU LAB SCH	0.0%	0.0%	0.0%	0.0%	3.2%	0.0%	0.0%	18.8%	5.0%	6.7%	6.3%	11.4%	3.8%	4.5%
75 UF LAB SCH	1.9%	1.9%	0.0%	0.0%	0.0%	0.0%	0.0%	0.9%	0.0%	0.0%	0.0%	0.0%	0.9%	0.3%
78 CONNECTIONS	1.6%	13.2%	5.1%	21.5%	11.1%	5.0%	14.5%	17.5%	4.7%	0.0%	0.0%	0.0%	0.0%	10.1%
79 FLVA	0.0%	1.0%	2.9%	5.4%	2.7%	4.6%	5.4%	4.6%	1.9%	0.0%	0.0%	0.0%	0.0%	3.1%
STATE TOTALS	6.4%	6.6%	4.1%	8.1%	1.9%	1.0%	3.3%	4.0%	3.4%	11.6%	11.3%	10.8%	5.7%	6.0

*No non-promotions occurred among pre-kindergarten students.

**Data Source: DOE Survey 5 2006-07 data as of 11/01/07

‡Because of a high migration rate, non-promotion rates for Dozier/Okeechobee may be greater than 100%.

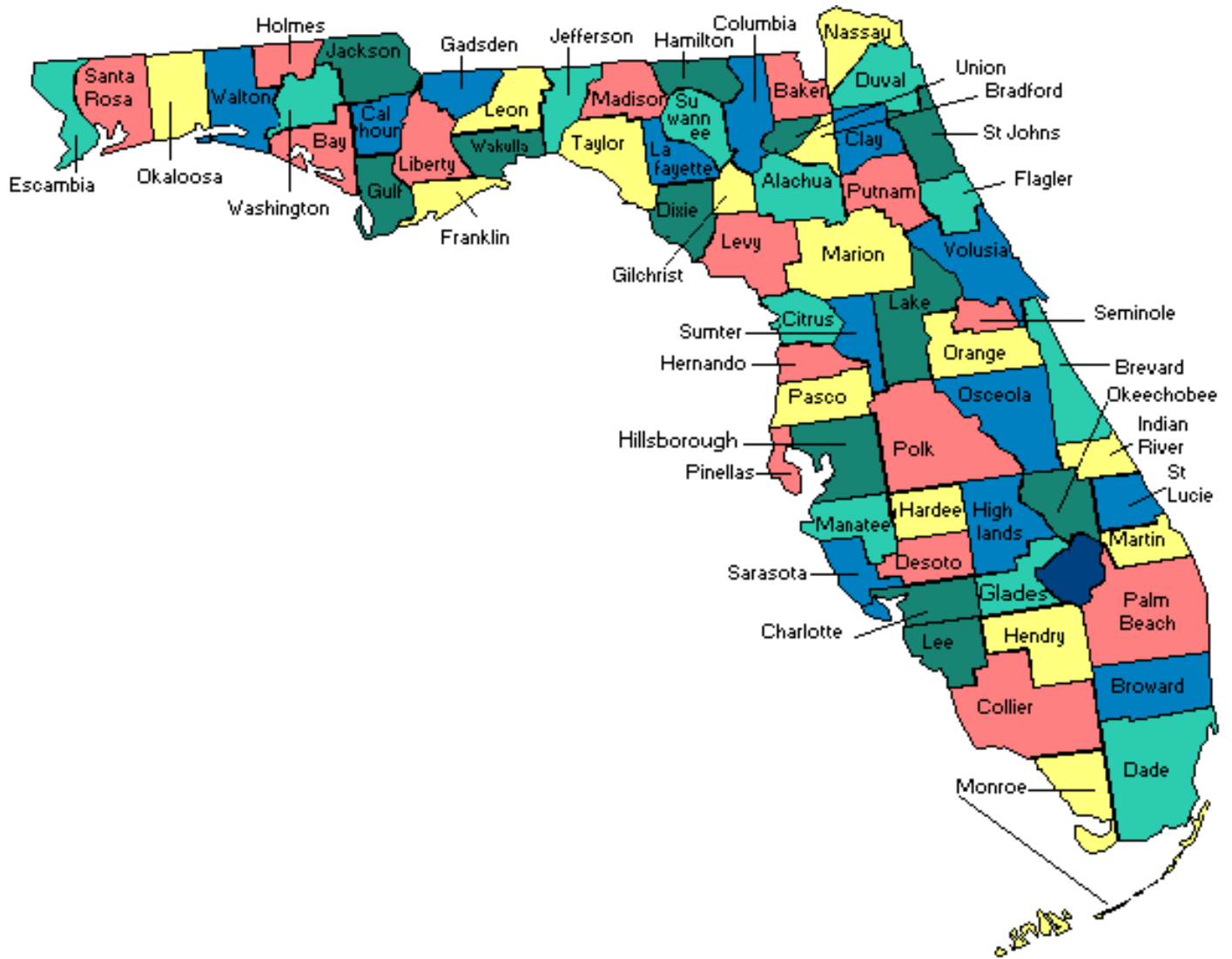
Table 5: PK-12 Non-Promotion Counts and Rates by Gender*

District	PK-12 Non-Promotions (as of 11/01/07)		PK-12 Non-Promotion Rates (as of 11/01/07)	
	Female	Male	Female	Male
1 ALACHUA	732	1,103	5.2%	7.4%
2 BAKER	91	189	3.8%	7.3%
3 BAY	700	1,027	5.3%	7.4%
4 BRADFORD	84	176	4.7%	9.3%
5 BREVARD	3,071	4,568	8.5%	11.8%
6 BROWARD	5,585	9,556	4.4%	7.1%
7 CALHOUN	49	56	4.4%	5.1%
8 CHARLOTTE	143	252	1.6%	2.8%
9 CITRUS	298	544	3.8%	6.6%
10 CLAY	420	651	2.4%	3.6%
11 COLLIER	820	1,360	3.9%	6.1%
12 COLUMBIA	362	564	7.4%	10.7%
13 DADE	7,474	12,318	4.3%	6.8%
14 DESOTO	132	294	5.8%	10.9%
15 DIXIE	60	89	5.4%	7.9%
16 DUVAL	4,581	6,668	7.4%	10.5%
17 ESCAMBIA	1,024	1,562	4.9%	7.2%
18 FLAGLER	189	360	3.2%	5.7%
19 FRANKLIN	39	68	6.2%	9.9%
20 GADSDEN	268	392	8.2%	11.6%
21 GILCHRIST	85	145	5.9%	10.1%
22 GLADES	37	80	6.3%	12.0%
23 GULF	52	53	4.9%	4.7%
24 HAMILTON	58	75	6.1%	6.9%
25 HARDEE	248	331	10.4%	12.5%
26 HENDRY	111	209	3.1%	5.4%
27 HERNANDO	573	897	5.2%	7.8%
28 HIGHLANDS	446	680	7.4%	10.6%
29 HILLSBOROUGH	5,336	7,969	5.7%	8.0%
30 HOLMES	46	108	2.8%	6.1%
31 INDIAN RIVER	167	258	2.0%	2.8%
32 JACKSON	191	308	5.4%	8.1%
33 JEFFERSON	33	58	5.5%	9.4%
34 LAFAYETTE	18	23	3.5%	4.1%
35 LAKE	630	1,150	3.3%	5.7%
36 LEE	2,160	3,278	5.6%	8.1%
37 LEON	771	1,151	4.9%	7.0%
38 LEVY	196	317	6.4%	9.9%
39 LIBERTY	32	42	5.0%	5.1%
40 MADISON	72	106	5.3%	6.7%
41 MANATEE	1,102	1,470	5.3%	6.8%
42 MARION	508	790	2.5%	3.6%
43 MARTIN	149	227	1.7%	2.4%
44 MONROE	145	271	3.6%	6.2%
45 NASSAU	247	360	4.6%	6.4%
46 OKALOOSA	729	1,283	5.0%	8.1%
47 OKEECHOBEE	240	306	6.8%	8.2%
48 ORANGE	4,568	7,161	5.4%	8.0%
49 OSCEOLA	1,224	1,892	4.9%	7.1%
50 PALM BEACH	3,553	5,635	4.3%	6.4%
51 PASCO	1,149	1,709	3.7%	5.1%
52 PINELLAS	2,024	2,814	3.8%	5.0%
53 POLK	2,433	4,128	5.4%	8.6%
54 PUTNAM	387	566	6.8%	8.9%
55 ST. JOHNS	267	399	2.0%	2.9%
56 ST. LUCIE	1,041	1,694	5.5%	8.6%
57 SANTA ROSA	250	512	2.0%	3.9%
58 SARASOTA	750	1,169	3.7%	5.4%
59 SEMINOLE	1,272	1,985	3.9%	5.8%
60 SUMTER	139	241	3.8%	6.3%
61 SUWANNEE	123	195	4.3%	6.3%
62 TAYLOR	93	145	5.6%	8.2%
63 UNION	49	86	4.5%	7.3%
64 VOLUSIA	1,643	2,628	5.1%	7.7%
65 WAKULLA	68	159	2.9%	5.9%
66 WALTON	148	233	4.6%	6.6%
67 WASHINGTON	90	111	5.3%	6.0%
68 DEAF/BLIND	13	17	4.1%	4.1%
69 DOZIER/OKEEC	0	368		98.1%
72 FAU LAB SCH	1	3	0.3%	0.9%
73 FSU LAB SCH	32	48	2.8%	4.5%
74 FAMU LAB SCH	7	12	3.2%	5.9%
75 UF LAB SCH	1	3	0.2%	0.5%
78 CONNECTIONS	27	42	7.8%	12.5%
79 FLVA	11	10	3.4%	2.8%
STATE	61,867	97,707	4.8%	7.1%

*Data Source: DOE Survey 5 2006-07 data as of 11/01/07

This page is intentionally blank.

FLORIDA SCHOOL DISTRICTS



This report was designed and prepared in the Office of Education Information and Accountability Services, Florida Department of Education. For further information, contact [Education Information and Accountability Services](#), 852 Turlington Bldg., 325 West Gaines Street, Tallahassee, Florida 32399-0400, or call (850) 245-0400 or Suncom 205-0400, or [email to: askeias@fldoe.org](mailto:askeias@fldoe.org).